

Tip

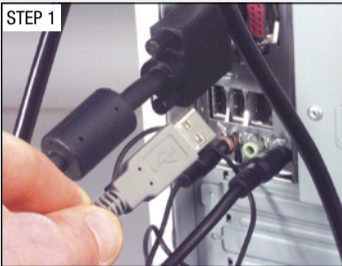
Advantage of using the USB mountable extension cable assembly

Connecting a cable to the hard to access USB port on your PC can be difficult.

Suggested Uses:

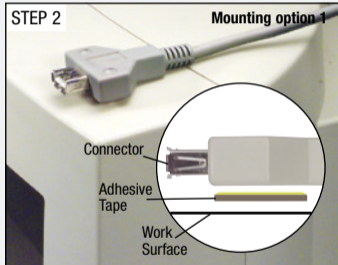
- Digital Cameras
- MP3 Players
- External Hard Drives
- Test Environments

STEP 1



Simply connect the mountable extension cable once to the USB port on the back of your computer.

STEP 2



This cable can be mounted to your PC monitor or any work surface. Choose your preferred mounting option using either the double sided adhesive tape or screws provided. Your USB port is now easy to access.

Mounting option 2

