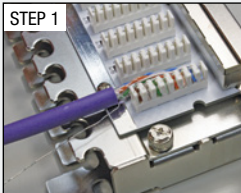


Tip *How to terminate a cable drain wire*

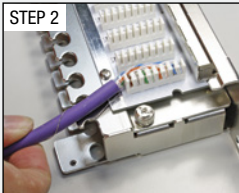
Termination of drain wire for each cable assembly that you wish to punch down to the panel.

STEP 1



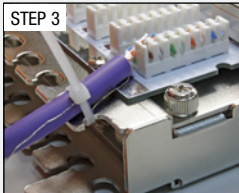
Punch down your conductors onto the block to either the EIA/TIA 568A or 568B standard and make sure to keep the drain wire long enough for the next steps.

STEP 2



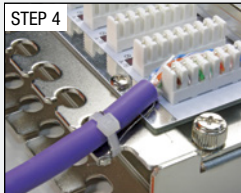
Wrap the Drain wire around the cable management holder (see image) and then around the jacket of the cable.

STEP 3



Using the included cable ties secure the cable and drain wire to the cable management holder.
(repeat for each port)

STEP 4



Cut off any excess from the cable tie.