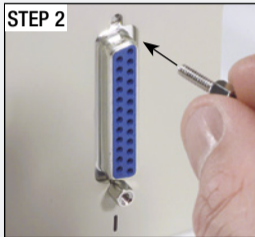


Tip *Easily panel mount adapters*



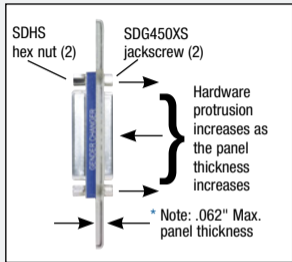
1. Remove standard hardware provided with adapter. Mount adapter from rear of panel.



2. Secure with jackscrew SDG450XS (purchased separately) from front of panel.



3. Thread hex nut SDHS (purchased separately) onto exposed threads of SDG450XS.



*Note: Maximum recommended panel thickness is 0.062". Dimensions in excess of 0.062" can limit proper cable mating due to hex nut protrusion. Panels that exceed 0.062" can be milled down to the recommended thickness in the area around the adapter.