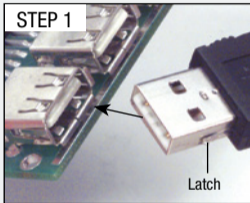
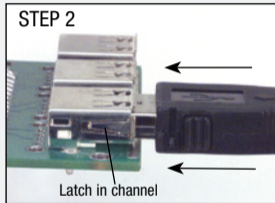


## Tip

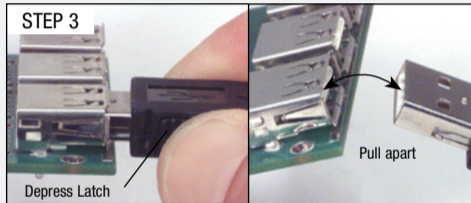
### *How does the latching USB connector work?*



Insert the latching USB connector into the USB jack.



The latches on each side of the connector lock into the channel cut-outs of any USB jack. **Note:** It may be necessary to rock the latching connector slightly to set the latches into the channels.



To remove the latching USB connector, simply depress the release mechanisms on the sides of the backshell and pull apart.