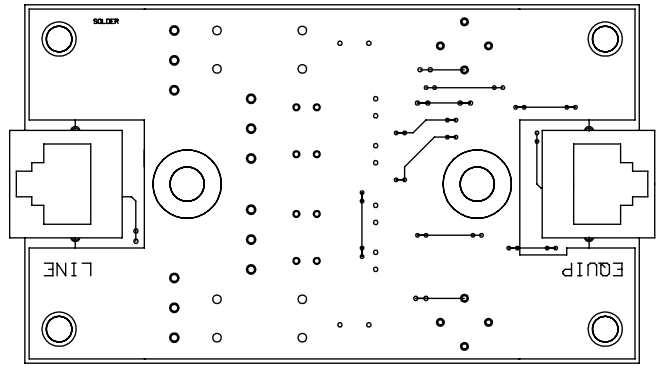
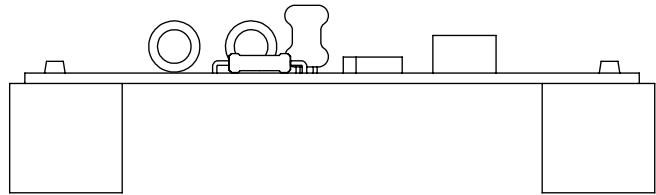
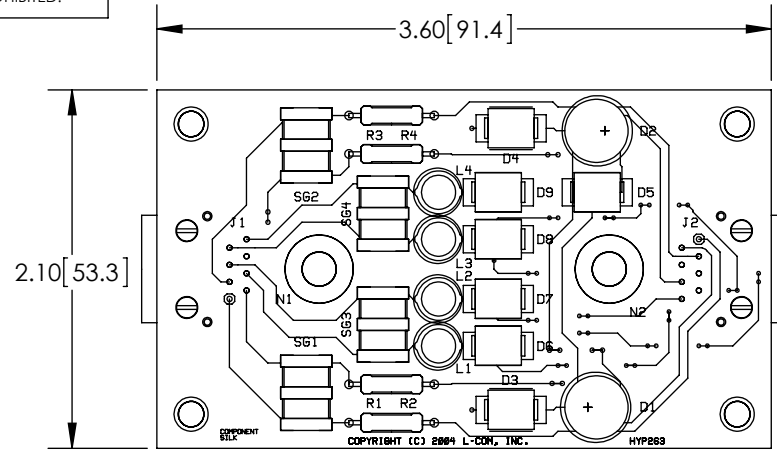


THE INFORMATION CONTAINED IN THIS DRAWING IS THE SOLE PROPERTY OF L-COM, INC. ANY REPRODUCTION IN PART OR WHOLE WITHOUT THE WRITTEN PERMISSION OF L-COM, INC. IS PROHIBITED.

REVISIONS			
REV	DESCRIPTION	DATE	APPROVED
A	INITIAL RELEASE	12/28/12	D.GRIFFIN



NOTES:

1- SHALL BE PACKAGED AS PER L-COM SPEC PKG-00012

- ALL DIMENSIONS FOR REFERENCE ONLY -

RoHS Compliant ✓

UNLESS OTHERWISE SPECIFIED, DIMENSIONS ARE IN INCHES [mm] DIMENSIONAL TOLERANCES: .X = ±.1 .XX = ±.01 .XXX = ±.005 ANGULAR TOLERANCES: ALL = ± 1°	APPROVALS B.PUCHASKI CHECKED BY K.BURGNER APPROVED BY P.PESA	DATE 12/28/12 12/28/12 12/28/12	45 BEECHWOOD DRIVE NORTH ANDOVER, MA 01845			
	CATEGORY LIGHTNING PROTECTOR			PRODUCT DESCRIPTION LP REPLACEMENT MODULE HYP263		
	PROJECTION 	CONFIGURATION DETAILS OF UNDIMENSIONED FEATURES MAY VARY	COLOR VARIATIONS MAY OCCUR		SIZE A	FSCM NO. 43321
SCALE: NONE		CAD FILE: ALPR-HYP263.SLDDRW		SHEET 1 OF 1		