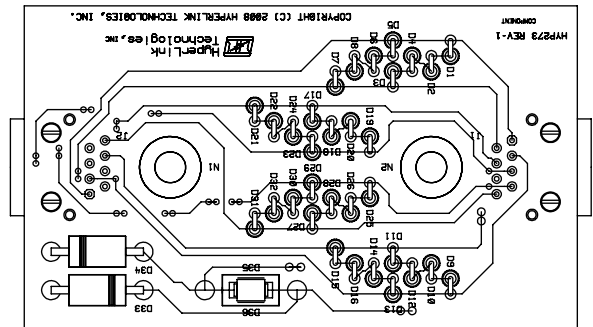
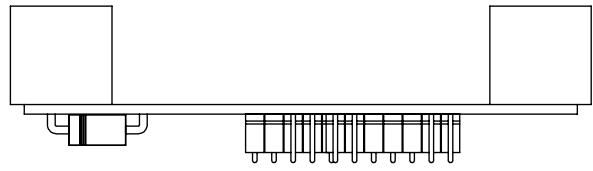
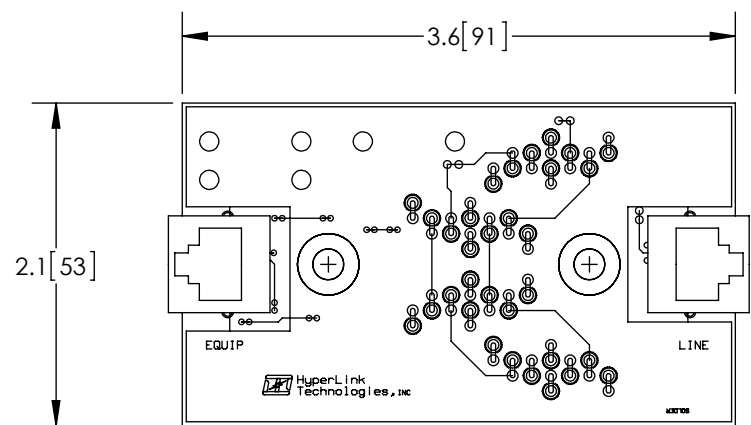


THE INFORMATION CONTAINED IN THIS DRAWING IS THE SOLE PROPERTY OF L-COM, INC. ANY REPRODUCTION IN PART OR WHOLE WITHOUT THE WRITTEN PERMISSION OF L-COM, INC. IS PROHIBITED.

REVISIONS			
REV	DESCRIPTION	DATE	APPROVED
A	INITIAL RELEASE	8/27/13	D.GRIFFIN



NOTES:  
 1- ALL PARTS SHALL BE PACKAGED AS PER L-COM SPEC PKG-00012  
 - ALL DIMENSIONS FOR REFERENCE ONLY -  
 REGULATORY COMPLIANCE:  
 RoHS, CE

UNLESS OTHERWISE SPECIFIED, DIMENSIONS ARE IN INCHES [mm]  DIMENSIONAL TOLERANCES: .X = ±.1 [2.54] .XX = ±.01 [.25] .XXX = ±.005 [.13]  ANGULAR TOLERANCES: ALL = ± 1°	APPROVALS	DATE		45 BEECHWOOD DRIVE NORTH ANDOVER, MA 01845
	DRAWN BY B.PUCHASKI	08/26/13		
PROJECTION 	CHECKED BY P.PESA	08/26/13	CATEGORY LIGHTNING PROTECTORS	
	APPROVED BY P.PESA	08/26/13	PRODUCT DESCRIPTION LP REPLACEMENT PCB ASSEMBLY HYP273	
	CONFIGURATION DETAILS OF UNDIMENSIONED FEATURES MAY VARY		SIZE <b>A</b>	FSCM NO. <b>43321</b>
	COLOR VARIATIONS MAY OCCUR		DWG. NO. ALPR-HYP273	REV. <b>A</b>
			SCALE: NONE	CAD FILE: ALPR-HYP273.SLDDRW
				SHEET 1 OF 1