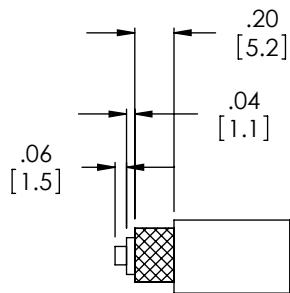


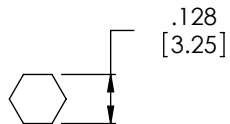
THE INFORMATION CONTAINED IN THIS DRAWING IS THE SOLE PROPERTY OF L-COM, INC. ANY REPRODUCTION IN PART OR WHOLE WITHOUT THE WRITTEN PERMISSION OF L-COM, INC. IS PROHIBITED.

REVISIONS			
REV	DESCRIPTION	DATE	APPROVED
A	INITIAL RELEASE	3/11/10	D.GRIFFIN

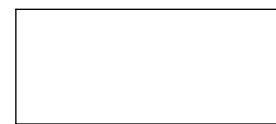
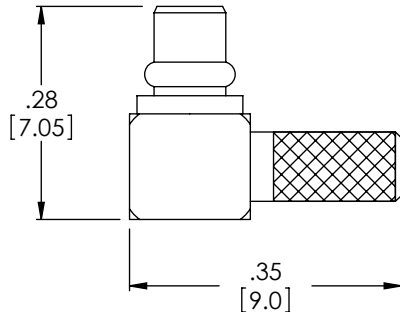
DESCRIPTION	MATERIAL	FINISH
BODY	BRASS	NICKEL PLATE
DIELECTRIC	PTFE	-
INSULATOR	ACETAL	-
CENTER PIN	PHOSPHOR BRONZE	GOLD PLATE
CAP	BRASS	NICKEL PLATE
FERRULE	BRASS	NICKEL PLATE
RETAINING RING	BERYLLIUM COPPER	NICKEL PLATE



RECOMMENDED CABLE STRIPPING



RECOMMENDED CRIMP SIZE (PIN TO BE SOLDERED)



FERRULE



INSULATOR



CAP

NOTES:


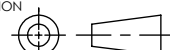
ELECTRICAL:  
 IMPEDANCE: 50 OHMS.  
 WITHSTAND VOLTAGE: 500V  
 FREQUENCY RANGE: 0 - 6 GHz.  
 VSWR: ≤ 1.50 @ 0-6 GHz.  
 DURABILITY: ≥ 500 CYCLE  
 CABLE RETENTION: > 10 POUNDS

MISCELLANEOUS:  
 APPLICATION: LOW-LOSS 100 SERIES, RG174, RG316, RG188, & RG179.

COMPONENTS SHALL BE INDIVIDUALLY PACKAGED IN ACCORDANCE WITH L-COM SPECIFICATION PS-0031.

ALL DIMENSIONS ARE FOR REFERENCE ONLY.

**RoHS Compliant** ✓

UNLESS OTHERWISE SPECIFIED, DIMENSIONS ARE IN INCHES [mm]  DIMENSIONAL TOLERANCES: .X = ±.1 .XX = ±.01 .XXX = ±.005  ANGULAR TOLERANCES: ALL = ± 1°	APPROVALS	DATE		45 BEECHWOOD DRIVE NORTH ANDOVER, MA 01845	
	DRAWN BY D.FRISIELLO	3/9/10			
	CHECKED BY C.BRAN	3/9/10	CATEGORY	COAXIAL	
APPROVED BY K.BURGNER	3/9/10	PRODUCT DESCRIPTION	MMCX RIGHT ANGLE PLUG CRIMP		
PROJECTION 	COLOR VARIATIONS MAY OCCUR	SIZE <b>A</b>	FSCM NO. <b>43321</b>	DWG. NO. AMMM-1104	REV. <b>A</b>
SCALE: NONE		CAD FILE: AMMM-1104.SLDDRW		SHEET 1 OF 1	