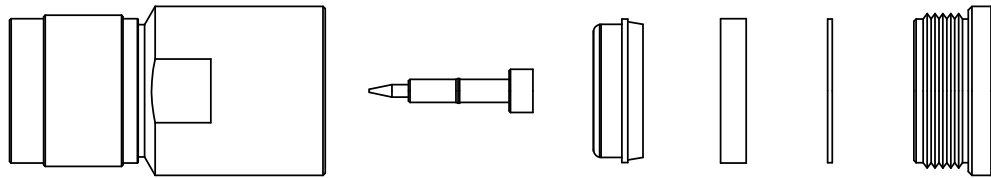


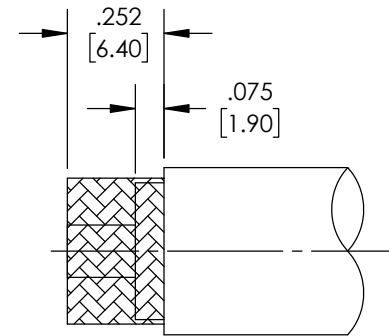
THE INFORMATION CONTAINED IN THIS DRAWING IS THE SOLE PROPERTY OF L-COM, INC. ANY REPRODUCTION IN PART OR WHOLE WITHOUT THE WRITTEN PERMISSION OF L-COM, INC. IS PROHIBITED.

| REVISIONS | | | |
|-----------|-----------------------------|------------|----------|
| REV | DESCRIPTION | DATE | APPROVED |
| D | UPDATE DRAWING | 11/27/2007 | KBURGNER |
| E | ECN 10568 UPDATE PER VENDOR | 11/19/2020 | SELLIS |
| | | | |
| | | | |

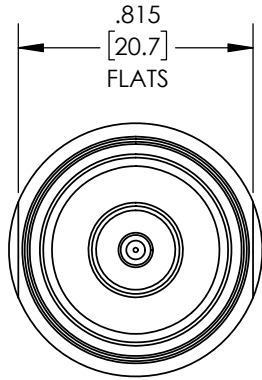
| MATERIALS | |
|-----------|-----------------------|
| BODY | BRASS / NICKEL PLATED |
| CONTACT | BRASS / GOLD PLATED |
| INSULATOR | PTFE |



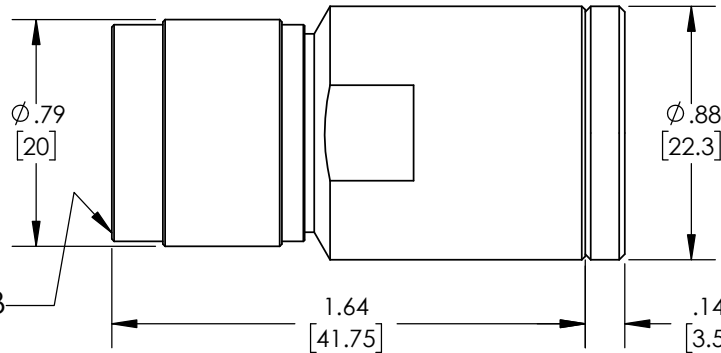
EXPLODED VIEW



RECOMMENDED CABLE STRIPPING DIMENSIONS



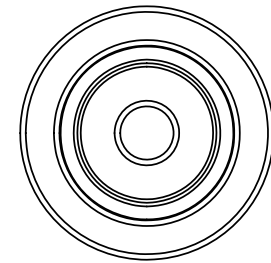
.815
[20.7]
FLATS



5/8-24UNEF-2B

1.64
[41.75]


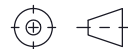
.14
[3.5]



NOTES:

IMPEDANCE: 50 OHMS
 FREQUENCY RANGE: DC~11 GHz
 VOLTAGE RATING: 1500 VOLTS PEAK
 DIELECTRIC WITHSTANDING VOLTAGE: 2500 VOLTS RMS
 INSERTION LOSS: .20 dB MAX.
 COUPLING PROOF TORQUE: 30 IN-LBS. MIN.

TO BE INDIVIDUALLY PACKAGED IN ACCORDANCE WITH L-COM SPEC PS-0031

| | | | |
|--|----------------------------|---|---|
| UNLESS OTHERWISE SPECIFIED, DIMENSIONS ARE IN INCHES [mm] OVERALL CABLE LENGTH TOLERANCE: ≤12 [305] = +1 [25] / -0 >12 [305] ≤60 [1524] = +2 [51] / -0 >60 [1524] ≤120 [3048] = +4 [102] / -0 >120 [3048] ≤300 [7620] = +6 [152] / -0 >300 [7620] = +5% / -0 ALL OTHER DIMENSIONAL TOLERANCES: .X = ± .2 [5] FRACTIONS ± 1/32 .XX = ± .02 [.5] ANGLES ± 1° .XXX = ± .005 [.13] | APPROVALS | DATE |  50 High Street, West Mill, North Andover, MA 01845 USA. Phone: 1.800.341.5266 1.978.682.6936 |
| | DRAWN BY BPUCHASKI | 09/04/2013 | |
| THIRD-ANGLE PROJECTION  | APPROVED BY D | 09/04/2013 | CATEGORY COAXIAL |
| CONFIGURATION DETAILS OF UNDIMENSIONED FEATURES MAY VARY | COLOR VARIATIONS MAY OCCUR | PRODUCT DESCRIPTION CONN-Male Clamp 600 Series Cable | SIZE A |
| SCALE: NONE | CAGE CODE 43321 | DWG. NO. ANM-2602 | REV. E |
| CAD FILE: ANM-2602.SLDDRW | | SHEET 1 OF 1 | |