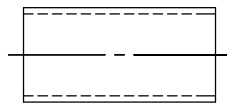


THE INFORMATION CONTAINED IN THIS DRAWING IS THE SOLE PROPERTY OF L-COM, INC.. ANY REPRODUCTION IN PART OR WHOLE WITHOUT THE WRITTEN PERMISSION OF L-COM, INC. IS PROHIBITED.

REVISIONS			
REV	DESCRIPTION	DATE	APPROVED
A	INITIAL RELEASE	4/21/10	D.GRIFFIN
B	ECN 6566 CHANGE BODY FINISH TO ALBALOY	12/05/12	B.PUCHASKI

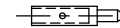
DESCRIPTION	MATERIAL	FINISH
BODY	BRASS	ALBALOY PLATE
CENTER PIN	BRASS	GOLD PLATE
UNLOCK SLEEVE	BRASS	NICKEL PLATE
CRIMP FERRULE	COPPER	NICKEL PLATE
INSULATOR	PTFE	-



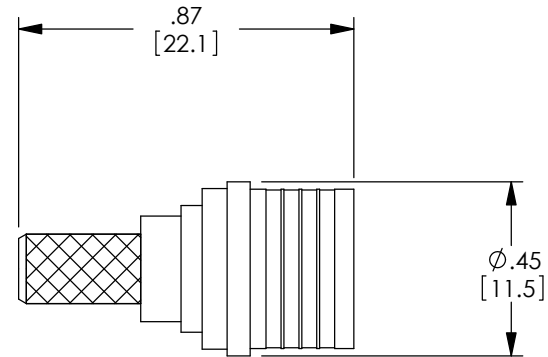
FERRULE



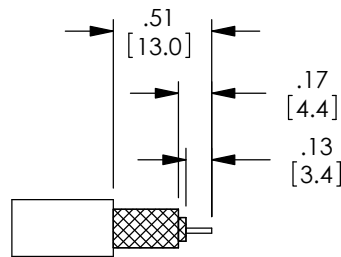
INSULATOR



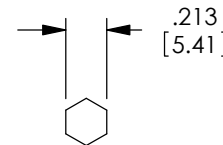
CENTER PIN



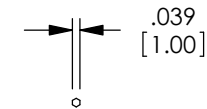
BODY



RECOMMENDED CABLE STRIPPING



RECOMMENDED FERRULE CRIMP SIZE



RECOMMENDED PIN CRIMP SIZE

NOTES:

ELECTRICAL:
 IMPEDANCE: 50 OHMS
 WITHSTAND VOLTAGE: 1000 VOLTS
 FREQUENCY RANGE: 0 ~ 18 GHz
 DURABILITY: > 100 CYCLES
 CABLE RETENTION: 40 POUNDS

MISCELLANEOUS:
 APPLICATION: RG58, LMR195

COMPONENT SHALL BE INDIVIDUALLY PACKAGED IN ACCORDANCE WITH L-COM SPECIFICATION PS-0031.

ALL DIMENSIONS ARE FOR REFERENCE ONLY.

RoHS Compliant ✓

UNLESS OTHERWISE SPECIFIED, DIMENSIONS ARE IN INCHES [mm] OVERALL CABLE LENGTH TOLERANCE: ≤12 [305] = +1 [25] / -0 >12 [305] ≤60 [1524] = +2 [51] / -0 >60 [1524] ≤120 [3048] = +4 [102] / -0 >120 [3048] ≤300 [7620] = +6 [152] / -0 >300 [7620] = +3% / -0% ALL OTHER DIMENSIONAL TOLERANCES: .X = ±.2 .XX = ±.02 .XXX = ±.005	APPROVALS DRAWN BY D.FRISIELLO CHECKED BY K.BURGNER APPROVED BY K.BURGNER	DATE 4/19/10 4/19/10 4/19/10	45 BEECHWOOD DRIVE NORTH ANDOVER, MA 01845
	CONFIGURATION DETAILS OF UNDIMENSIONED FEATURES MAY VARY		
PROJECTION 	COLOR VARIATIONS MAY OCCUR	SIZE A	FSCM NO. 43321 DWG. NO. AQP-1702
SCALE: NONE		CAD FILE: AQP-1702.SLDDRW	
SHEET 1 OF 1			REV. B