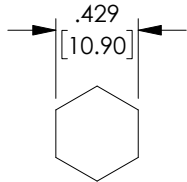
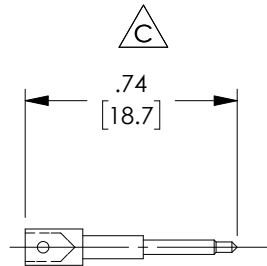
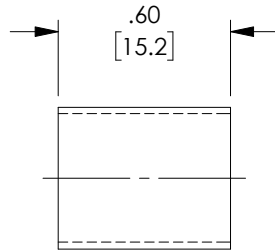


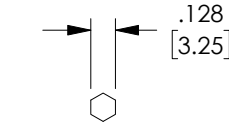
THE INFORMATION CONTAINED IN THIS DRAWING IS THE SOLE PROPERTY OF L-COM, INC. ANY REPRODUCTION IN PART OR WHOLE WITHOUT THE WRITTEN PERMISSION OF L-COM, INC. IS PROHIBITED.

REVISIONS			
REV	DESCRIPTION	DATE	APPROVED
A	INITIAL RELEASE	10/31/2006	P.PESA
B	ECN 7999: REDRAW COMPONENT TO NEW VENDOR SPEC	06/30/2015	DFRISIELLO
C	ECN 11519: REVISED CENTER PIN DIMENSIONS AND CHART	01/05/2022	SRAUTUS

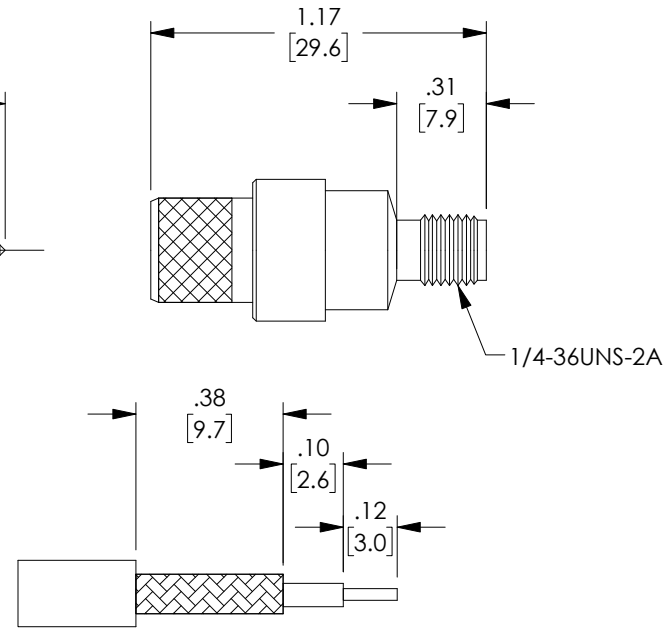
DESCRIPTION	MATERIAL	FINISH
BODY	BRASS	NICKEL PLATE
DIELECTRIC	PTFE	-
CENTER PIN	BRASS	GOLD PLATE
FERRULE	BRASS	NICKEL PLATE



RECOMMENDED FERRULE CRIMP SIZE



RECOMMENDED PIN CRIMP SIZE



RECOMMENDED CABLE STRIPPING


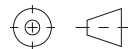
**NOTES:**

**ELECTRICAL:**  
 IMPEDANCE: 50 OHMS  
 WITHSTAND VOLTAGE: 1000V  
 FREQUENCY RANGE: 0 ~ 6.0 GHz  
 VSWR: 1.3 MAX. @ 0~6 GHz  
 DURABILITY: >500 CYCLES  
 CABLE RETENTION: >40 POUNDS

COMPONENT SHALL BE INDIVIDUALLY PACKAGED IN ACCORDANCE WITH L-COM SPECIFICATION PS-0031.

ALL DIMENSIONS ARE FOR REFERENCE ONLY.

**REGULATORY COMPLIANCE:**  
 EU ROHS DIRECTIVE (MOST RECENT RELEASED VERSION)

UNLESS OTHERWISE SPECIFIED, DIMENSIONS ARE IN INCHES [mm]	APPROVALS	DATE	 50 High Street, West Mill, North Andover, MA 01845 USA. Phone: 1.800.341.5266 1.978.682.6936
	OVERALL CABLE LENGTH TOLERANCE: ≤12 [305] = +1 [25] / -0 >12 [305] ≤60 [1524] = +2 [51] / -0 >60 [1524] ≤120 [3048] = +4 [102] / -0 >120 [3048] ≤300 [7620] = +6 [152] / -0 >300 [7620] = +5% / -0	DRAWN BY DFRISIELLO	
ALL OTHER DIMENSIONAL TOLERANCES: .X = ± .2 [5]   FRACTIONS ± 1/32 .XX = ± .02 [.5]   ANGLES ± 1° .XXX = ± .005 [.13]	CHECKED BY K.BURGNER	07/01/2015	CATEGORY COAXIAL
	APPROVED BY K.BURGNER	07/01/2015	
THIRD-ANGLE PROJECTION 	CONFIGURATION DETAILS OF UNDIMENSIONED FEATURES MAY VARY	COLOR VARIATIONS MAY OCCUR	SIZE <b>A</b>
		CAGE CODE <b>43321</b>	ITEM NO. <b>ARSJ-1404</b>
		SCALE: NONE	CAD FILE: ARSJ-1404.SLDDRW
		SHEET 1 OF 1	