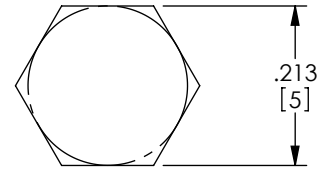
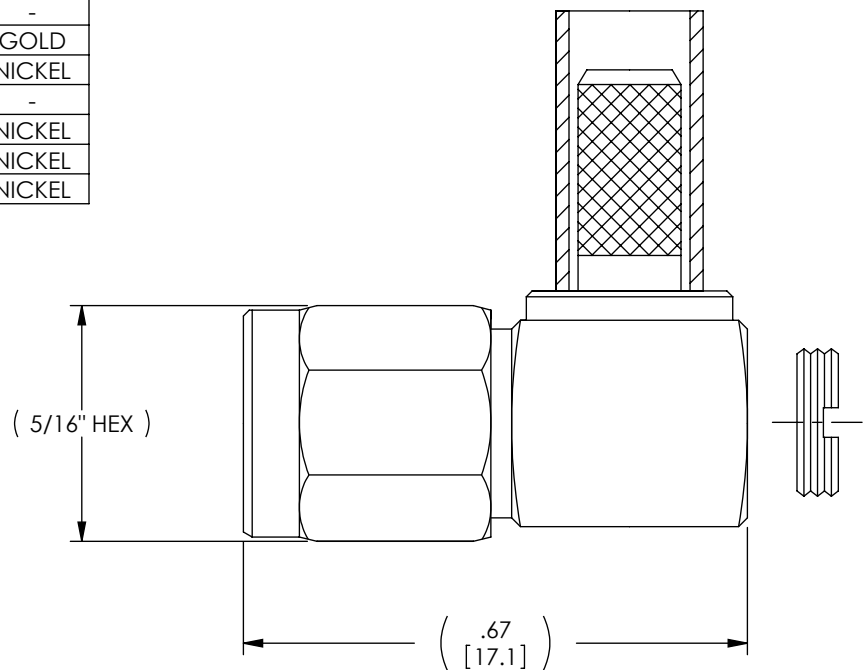


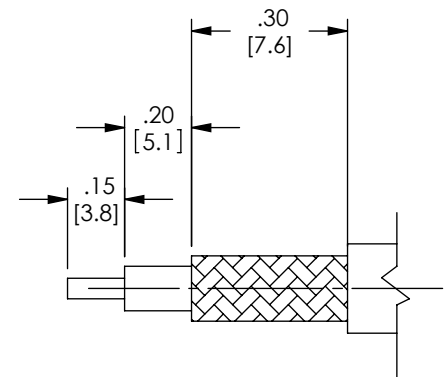
THE INFORMATION CONTAINED IN THIS DRAWING IS THE SOLE PROPERTY OF L-COM, INC. ANY REPRODUCTION IN PART OR WHOLE WITHOUT THE WRITTEN PERMISSION OF L-COM, INC. IS PROHIBITED.

REVISIONS			
REV	DESCRIPTION	DATE	APPROVED
A	INITIAL RELEASE	9/19/05	-
B	ECN 4566: REDRAW ONTO NEW FORMAT	2/26/10	D. CASTRO

DESCRIPTION	MATERIAL	FINISH
BODY	BRASS	NICKEL
INSULATOR	TEFLON	-
CENTER PIN	BRASS	GOLD
RETAINING RING	BRASS	NICKEL
GASKET	RUBBER	-
SHELL	BRASS	NICKEL
FERRULE	BRASS	NICKEL
CAP	BRASS	NICKEL



RECOMMENDED FERRULE CRIMP SIZE



RECOMMENDED CABLE STRIPPING

NOTES:

ELECTRICAL:

IMPEDANCE: 50 OHMS
 WITHSTAND VOLTAGE: 2500V
 FREQUENCY RANGE: 0~6 GHz
 VSWR: <1.50 @ 0~6 GHz
 DURABILITY: > 500 CYCLE
 CABLE RETENTION: > 40 POUNDS

MISCELLANEOUS:

COMPONENTS SHALL BE INDIVIDUALLY PACKAGED IN ACCORDANCE WITH L-COM SPECIFICATIONS PS-0031.

ALL DIMENSIONS ARE FOR REFERENCE ONLY.

RoHS Compliant ✓

UNLESS OTHERWISE SPECIFIED, DIMENSIONS ARE IN INCHES [mm] OVERALL CABLE LENGTH TOLERANCE: ≤12 [305] = +1 [25] / -0 >12 [305] ≤60 [1524] = +2 [51] / -0 >60 [1524] ≤120 [3048] = +4 [102] / -0 >120 [3048] ≤300 [7620] = +6 [152] / -0 >300 [7620] = +3% / -0% ALL OTHER DIMENSIONAL TOLERANCES: .X = ±.2 .XX = ±.02 .XXX = ±.005	APPROVALS DRAWN BY K. BURGNER	DATE 9/19/05	45 BEECHWOOD DRIVE NORTH ANDOVER, MA 01845
	CHECKED BY P. PESA	DATE 9/19/05	
PROJECTION 	CONFIGURATION DETAILS OF UNDIMENSIONED FEATURES MAY VARY	PRODUCT DESCRIPTION CON,RP-SMA PLUG R/A LMR195	SCALE: NONE CAD FILE: ARSP-1702.SLDDRW
COLOR VARIATIONS MAY OCCUR	SIZE A	FSCM NO. 43321	DWG. NO. ARSP-1702
SHEET 1 OF 1	REV. B	SHEET 1 OF 1	SHEET 1 OF 1