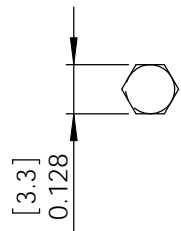


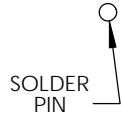
THE INFORMATION CONTAINED IN THIS DRAWING IS THE SOLE PROPERTY OF L-COM, INC. ANY REPRODUCTION IN PART OR WHOLE WITHOUT THE WRITTEN PERMISSION OF L-COM, INC. IS PROHIBITED.

REVISIONS			
REV	DESCRIPTION	DATE	APPROVED
A	INITIAL RELEASE	09/22/09	B.PUCHASKI
B	ECN 4355: UPDATED FORMAT AND TEXT	11/05/09	B.PUCHASKI
C	ECN 5802: CHANGED VALUES TO: 0-4 GHz	11/2/11	D.FRISIELLO

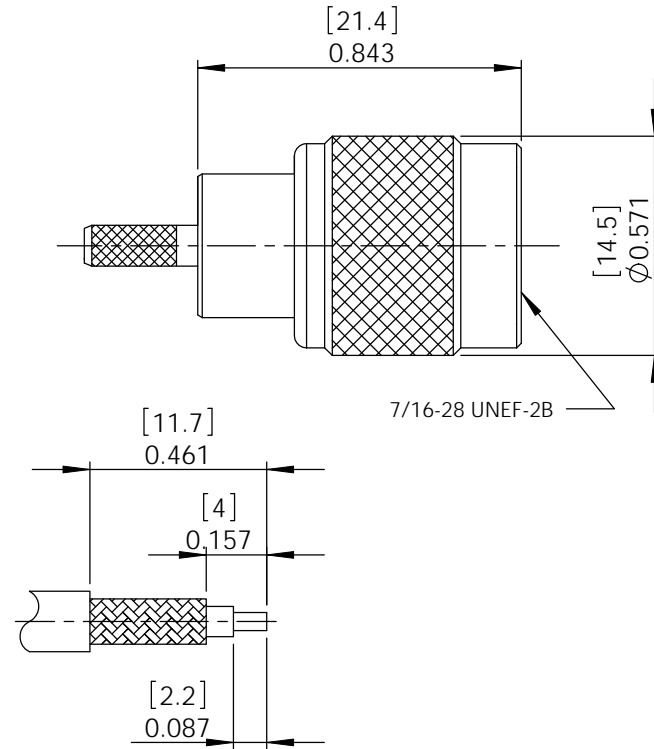
DESCRIPTION	MATERIAL	FINISH
CENTER CONTACTS	BRASS	GOLD
OUTER CONTACT	BRASS	NICKEL
COUPLING NUT	BRASS	NICKEL
CRIMP FERRULE	BRASS	NICKEL
GASKET	RUBBER	---
INSULATOR	TEFLON	---
RETAINING RING	BRASS	NICKEL



RECOMMENDED FERRULE CRIMP SIZE



RECOMMENDED PIN SOLDERED-



RECOMMENDED CABLE STRIPPING

NOTES:

ELECTRICAL:

IMPEDANCE: 50 OHMS
 WITHSTAND VOLTAGE: 1500V
 FREQUENCY RANGE: 0~4 GHz
 VSWR: <1.50 @ 0-4 GHz
 DURABILITY: ≥ 500 CYCLE
 CABLE RETENTION: > 30 POUNDS

MISCELLANEOUS:

COMPONENTS SHALL BE INDIVIDUALLY PACKAGED IN ACCORDANCE WITH L-COM SPECIFICATIONS PS-0031.

ALL DIMENSIONS ARE FOR REFERENCE ONLY.

RoHS Compliant

UNLESS OTHERWISE SPECIFIED, DIMENSIONS ARE IN INCHES [mm] DIMENSIONAL TOLERANCES: .X = ±.1 .XX = ±.01 .XXX = ±.005 ANGULAR TOLERANCES: ALL = ± 1°	APPROVALS	DATE		45 BEECHWOOD DRIVE NORTH ANDOVER, MA 01845
	DRAWN BY B.Puchaski	09/22/09		
PROJECTION 	CHECKED BY M.Audas	09/22/09	CATEGORY	
	APPROVED BY M.Audas	09/22/09	CONNECTOR	
CONFIGURATION DETAILS OF UNDIMENSIONED FEATURES MAY VARY			PRODUCT DESCRIPTION	
COLOR VARIATIONS MAY OCCUR			RP-TNC STRAIGHT PLUG CRIMP FOR RG316 / 100 SERIES	
SIZE A	FSCM NO. 43321	DWG. NO. ARTP-1100	REV. C	
SCALE: NONE		CAD FILE: ARTP-1100.SLDDRW		SHEET 1 OF 1