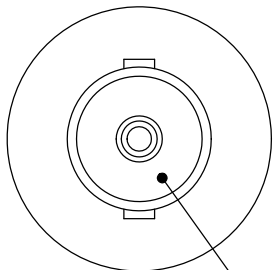


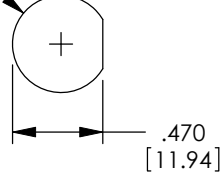
THE INFORMATION CONTAINED IN THIS DRAWING IS THE SOLE PROPERTY OF L-COM, INC. ANY REPRODUCTION IN PART OR WHOLE WITHOUT THE WRITTEN PERMISSION OF L-COM, INC. IS PROHIBITED.

REVISIONS			
REV	DESCRIPTION	DATE	APPROVED
A	RELEASED FOR PRODUCTION	5/7/02	TJC
B	CORRECTED LENGTH DIM., CHANGE CENTER PIN MATERIAL (ENC # 1125)	5/23/02	TJC
C	ECN#2771 CHG MATL CENTER CONTACT FROM PHOSPHER BRONZE TO BRASS	03/15/07	C.BERUBE
D	ECN 5889: REVISED DIMENSIONS, NEW FORMAT	12/22/11	D.FRISIELLO

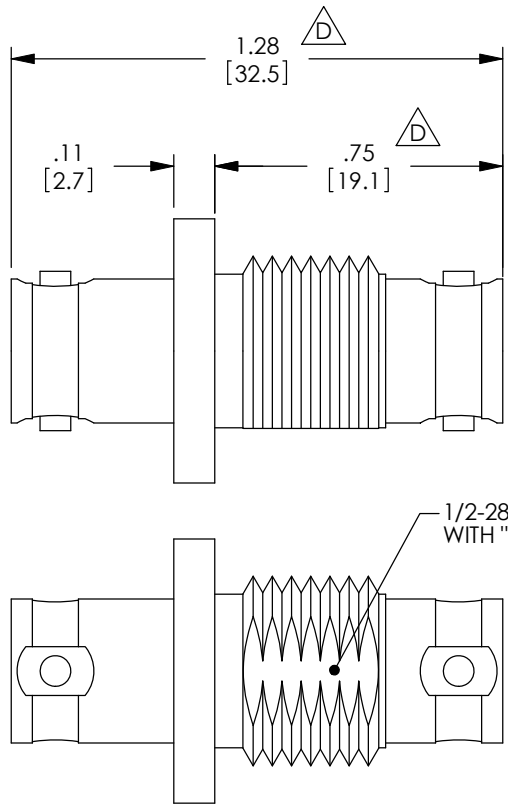


2X BNC JACK

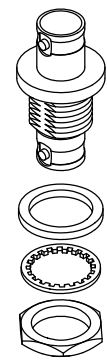
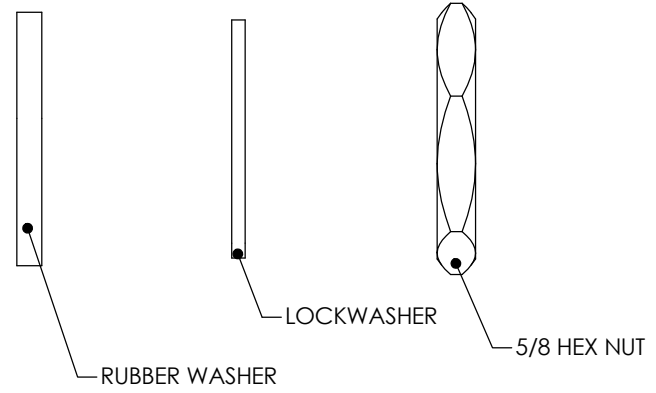
Ø.505
[12.83]



RECOMMENDED
PANEL OPENING



1/2-28 UNEF-2A
WITH "D" FLAT



DESCRIPTION	MATERIAL	PLATING
BODY	BRASS	NICKEL
DIELECTRIC	ACETAL	N/A
CENTER PINS	BRASS	GOLD

- NOTES:
1. IMPEDANCE: 75 OHMS
 2. SUPPLIED WITH MOUNTING HARDWARE SHOWN.
 3. COMPONENT SHALL BE INDIVIDUALLY PACKAGED IN ACCORDANCE WITH L-COM SPECIFICATION PS-0031.

RoHS Compliant ✓

UNLESS OTHERWISE SPECIFIED, DIMENSIONS ARE IN INCHES [mm] OVERALL CABLE LENGTH TOLERANCE: ≤12 [305] = +1 [25] / -0 >12 [305] ≤60 [1524] = +2 [51] / -0 >60 [1524] ≤120 [3048] = +4 [102] / -0 >120 [3048] ≤300 [7620] = +6 [152] / -0 >300 [7620] = +3% / -0% ALL OTHER DIMENSIONAL TOLERANCES: .X = ±.2 .XX = ±.02 .XXX = ±.005	APPROVALS DRAWN BY TJC CHECKED BY DFP APPROVED BY CM	DATE 4/19/02 4/19/02 4/19/02	45 BEECHWOOD DRIVE NORTH ANDOVER, MA 01845	
	CONFIGURATION DETAILS OF UNDIMENSIONED FEATURES MAY VARY			CATEGORY COAXIAL PRODUCT DESCRIPTION BNC JACK TO BNC JACK BULKHEAD ADAPTOR
PROJECTION 	COLOR VARIATIONS MAY OCCUR	SIZE A	FSCM NO. 43321 DWG. NO. BA036	REV. D
SCALE: NONE		CAD FILE: BA036.SLDDRW		SHEET 1 OF 1