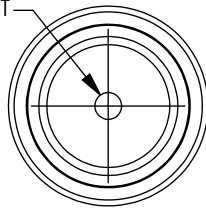


THE INFORMATION CONTAINED IN THIS DRAWING IS THE SOLE PROPERTY OF L-COM, INC. ANY REPRODUCTION IN PART OR WHOLE WITHOUT THE WRITTEN PERMISSION OF L-COM, INC. IS PROHIBITED.

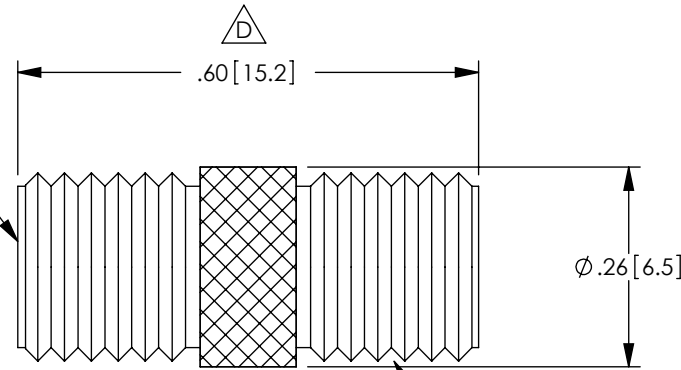
REVISIONS			
REV	DESCRIPTION	DATE	APPROVED
A	RELEASED FOR PRODUCTION	06/19/01	MCCORMICK
B	ECN#2084: CHANGED DESIGN OF SMA COUPLER	05/19/05	M.LAHEY
C	ECN 3124: UPDATE DWG FORMAT	12/19/07	D.GRIFFIN
D	ECN 5753: UPDATED DRAWING TO VENDOR SPEC., NEW FORMAT	10/5/11	D.FRISIELLO

DESCRIPTION	MATERIAL	FINISH
BODY	BRASS	NICKEL PLATE
DIELECTRIC	TEFLON	-
CENTER PIN	BRASS	GOLD PLATE

2X GOLD PLATED CENTER CONTACT



2X SMA JACK



2X, 1/4-36 UNS-2A THREAD

**RoHS Compliant** ✓



NOTES:

ELECTRICAL:  
 IMPEDANCE: 50 OHM  
 FREQUENCY RANGE: DC ~ 6 GHZ

COMPONENT SHALL BE INDIVIDUALLY PACKAGED  
 IN ACCORDANCE WITH L-COM SPECIFICATION PS-0031.

ALL DIMENSIONS ARE FOR REFERENCE ONLY.

UNLESS OTHERWISE SPECIFIED, DIMENSIONS ARE IN INCHES [mm] OVERALL CABLE LENGTH TOLERANCE: ≤12 [305] = +1 [25] / -0 >12 [305] ≤60 [1524] = +2 [51] / -0 >60 [1524] ≤120 [3048] = +4 [102] / -0 >120 [3048] ≤300 [7620] = +6 [152] / -0 >300 [7620] = +3% / -0% ALL OTHER DIMENSIONAL TOLERANCES: .X = ±.2 .XX = ±.02 .XXX = ±.005	APPROVALS DRAWN BY MCCORMICK	DATE 06/06/01	45 BEECHWOOD DRIVE NORTH ANDOVER, MA 01845
	CHECKED BY D.PARHAM APPROVED BY R.CARRICK	06/06/01 06/19/01	
PROJECTION 	CONFIGURATION DETAILS OF UNDIMENSIONED FEATURES MAY VARY	PRODUCT DESCRIPTION COUPLER SMA F/SMA F	
COLOR VARIATIONS MAY OCCUR	SIZE <b>A</b>	FSCM NO. <b>43321</b>	DWG. NO. BA23
REF	SCALE: NONE	CAD FILE: BA23.SLDDRW	REV. <b>D</b>