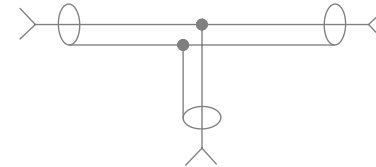
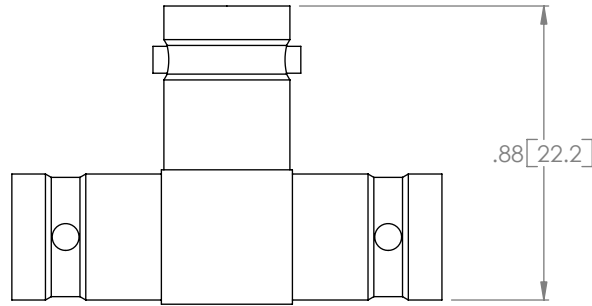
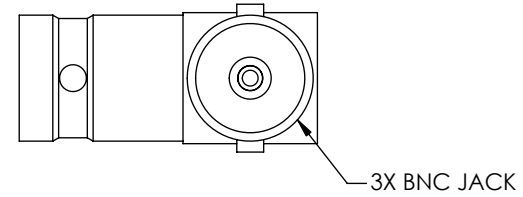
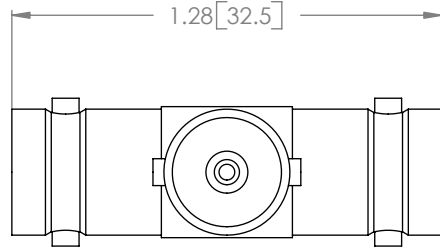


THE INFORMATION CONTAINED IN THIS DRAWING IS THE SOLE PROPERTY OF L-COM, INC. ANY REPRODUCTION IN PART OR WHOLE WITHOUT THE WRITTEN PERMISSION OF L-COM, INC. IS PROHIBITED.

REVISIONS			
REV	DESCRIPTION	DATE	CHANGED BY
A	RELEASED FOR PRODUCTION	05/04/01	MCCORMICK
B.	ECN 3131: UPDATE DWG FORMAT	12/28/07	D.GRIFFIN



CIRCUIT DIAGRAM

NOTES:

**MATERIAL:**  
 BODY - ZINC ALLOY (DIECAST)  
 CONTACT - BRASS, GOLD FLASHED  
 INSULATOR - DELRIN  
 NOMINAL CHARACTERISTIC IMPEDANCE: 50 OHMS

**RoHS Compliant** ✓

**L-com** 45 BEECHWOOD DRIVE  
 CONNECTIVITY PRODUCTS NORTH ANDOVER, MA  
 01845

UNLESS OTHERWISE SPECIFIED, DIMENSIONS ARE IN INCHES [mm] TOLERANCES TO BE: .X ±.1 [2.5] ANGLES ±2° .XX ±.01 [.25] .XXX ±.005 [.13] OVERALL CABLE LENGTH TOL: ≤ 60 [1524] +3 [76.2] / -0 > 60 [1524] +5% / -0%	APPROVALS	DATE	CATEGORY	
	DRAWN BY MCCORMICK	05/02/01	COAXIAL	
	CHECKED BY D.PARHAM	05/04/01	PRODUCT DESCRIPTION	
	APPROVED BY T.CLARK	05/04/01	ADAPTOR TEE BNC F/F/F	
PROJ	CONFIGURATION DETAILS OF UNDIMENSIONED FEATURES MAY VARY		SIZE <b>A</b>	FSCM NO. <b>43321</b>
			DWG. NO. <b>BA832E</b>	REV. <b>B</b>
			SCALE: NONE	CAD FILE: BA832E.SLDDRW
			SHEET 1 OF 1	