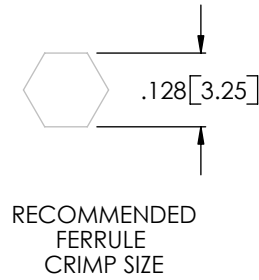
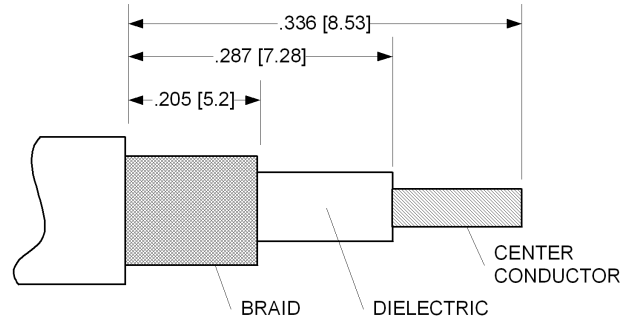
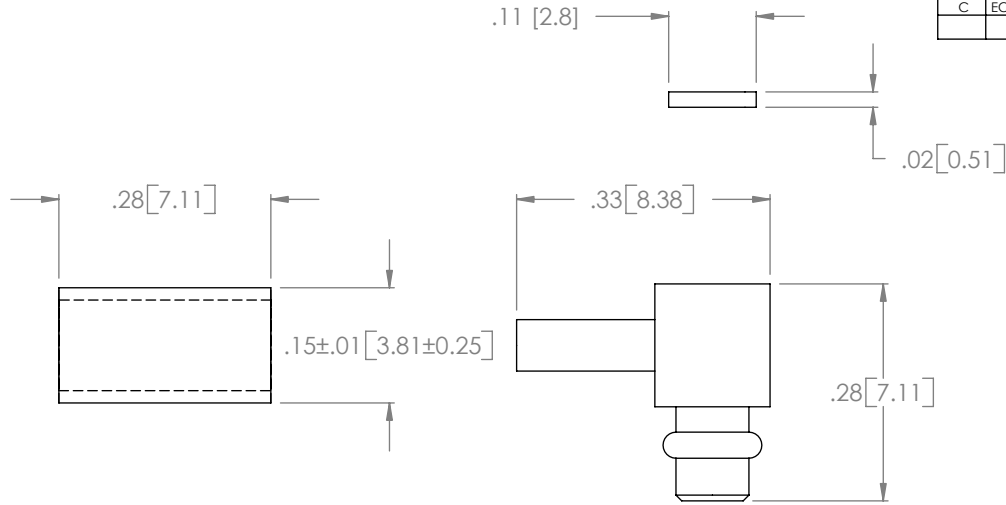


THE INFORMATION CONTAINED IN THIS DRAWING IS THE SOLE PROPERTY OF L-COM, INC. ANY REPRODUCTION IN PART OR WHOLE WITHOUT THE WRITTEN PERMISSION OF L-COM, INC. IS PROHIBITED.

REVISIONS			
REV	DESCRIPTION	DATE	CHANGED BY
A	INITIAL RELEASE	02/05/04	MCCORMICK
B	REVISED PIN MATERIAL AND SPECIFIED PLATING THICKNESS	05/18/06	MCCORMICK
C	ECN 3155: UPDATE DWG FORMAT	1/18/08	D.GRIFFIN



NOTES:

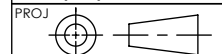
**MATERIAL:**  
 BODY: BRASS  
 INSULATOR: PTFE  
 PIN: BRASS  
 FERRULE: BRAS

**FINISH:**  
 BODY: GOLD PLATE  
 FERRULE: GOLD PLATE  
 PIN: GOLD 30u"

CABLE STRIPPING  
DIMENSIONS

**RoHS Compliant** ✓

UNLESS OTHERWISE SPECIFIED,  
 DIMENSIONS ARE IN INCHES [mm]  
 TOLERANCES TO BE:  
 .X ±.1 [2.5] ANGLES ±2°  
 .XX ±.01 [.25]  
 .XXX ±.005 [.13]  
 OVERALL CABLE LENGTH TOL:  
 ≤ 60 [1524] +3 [76.2] / -0  
 > 60 [1524] +5% / -0%



APPROVALS	DATE
DRAWN BY C.MCCORMICK	02/05/2004
CHECKED BY D.PARHAM	02/05/2004
APPROVED BY R.CARRICK	02/05/2004

CONFIGURATION DETAILS OF  
 UNDIMENSIONED FEATURES  
 MAY VARY

	45 BEECHWOOD DRIVE NORTH ANDOVER, MA 01845		
	CATEGORY COAXIAL		
PRODUCT DESCRIPTION MMCX RIGHT ANGLE CRIMP PLUG			
SIZE <b>A</b>	FSCM NO. <b>43321</b>	DWG. NO. BAC510	REV. <b>C</b>
SCALE: NONE		CAD FILE: BAC510.SLDDRW	SHEET 1 OF 1