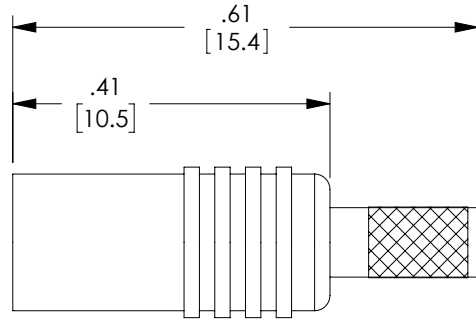


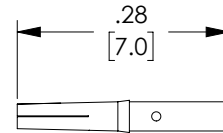
THE INFORMATION CONTAINED IN THIS DRAWING IS THE SOLE PROPERTY OF L-COM, INC. ANY REPRODUCTION IN PART OR WHOLE WITHOUT THE WRITTEN PERMISSION OF L-COM, INC. IS PROHIBITED.

| REVISIONS |   |            |              |
|-----------|---|------------|--------------|
| REV       | DESCRIPTION   | DATE       | APPROVED     |
| A         | INITIAL RELEASE   | 08/07/2007 | R.POLUBINSKI |
| B         | ECN 2983: ADDED STRIPPING DIMS, FERRULE DIM CHGD              | 09/10/2007 | R.POLUBINSKI |
| C         | ECN 5206: RE-DRAWN ADDED PACKAGING NOTE AND NEW FORMAT        | 12/13/2010 | DFRISIELLO   |
| D         | ECN 9671: REVISED MODEL, NOTES, FORMAT, ADDED ELECTRIC VALUES | 01/31/2019 | DFRISIELLO   |

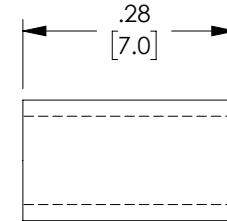
| DESCRIPTION    | MATERIAL         | FINISH     |
|----------------|------------------|------------|
| CONNECTOR BODY | BRASS            | GOLD FLASH |
| INSULATOR      | PTFE             | -          |
| PIN            | BERYLLIUM COPPER | GOLD PLATE |
| FERRULE        | BRASS            | GOLD FLASH |
| SHRINK TUBE    | PE               | BLACK      |



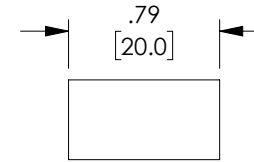
BODY



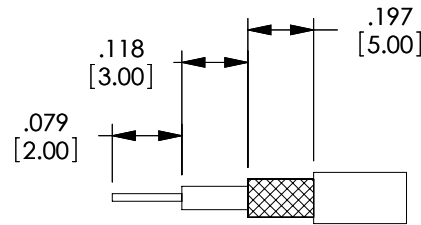
PIN



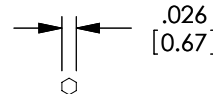
FERRULE



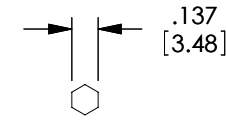
SHRINK TUBE



RECOMMENDED CABLE STRIPPING



RECOMMENDED PIN CRIMP



RECOMMENDED FERRULE CRIMP



NOTES:

ELECTRICAL:  
 IMPEDANCE: 50 OHM  
 FREQUENCY RANGE: 0 - 6 GHz  
 VOLTAGE RATING: ≥335 V RMS (DEPENDING ON CABLE)  
 INSULATOR RESISTANCE: ≥ 1G OHM  
 DIELECTRIC WITHSTANDING VOLTAGE: 750 V RMS  
 CENTER CONTACT RESISTANCE: ≤ 5 m OHM  
 OUTER CONTACT RESISTANCE: ≤ 2.5 m OHM

ALL DIMENSIONS ARE FOR REFERENCE ONLY.

APPLICATIONS: RG316, RG174, RG188, LMR100, B7805A

COMPONENT SHALL BE INDIVIDUALLY PACKAGED IN ACCORDANCE WITH L-COM SPECIFICATION PS-0031.



|   |                            |            |   |                          |  |
|---|----------------------------|------------|---|--------------------------|--|
| UNLESS OTHERWISE SPECIFIED, DIMENSIONS ARE IN INCHES [mm]<br>OVERALL CABLE LENGTH TOLERANCE:<br>≤12 [305] = +1 [25] / -0<br>>12 [305] ≤60 [1524] = +2 [51] / -0<br>>60 [1524] ≤120 [3048] = +4 [102] / -0<br>>120 [3048] ≤300 [7620] = +6 [152] / -0<br>>300 [7620] = +5% / -0% | APPROVALS                  | DATE       |   |                          | 50 HIGH STREET<br>NORTH ANDOVER, MA<br>01845 |
|   | DRAWN BY<br>R.POLUBINSKI   | 08/07/2007 |   |                          | CATEGORY<br><b>COAXIAL</b>                   |
| ALL OTHER DIMENSIONAL TOLERANCES:<br>.X = ± .2 [5.08]<br>.XX = ± .02 [1.51]<br>.XXX = ±.005 [1.13]  | CHECKED BY<br>J.ROBERTS    | 08/16/2007 | PRODUCT DESCRIPTION<br><b>MCX CRIMP JACK, RG174</b> |                          | SHEET 1 OF 1                                 |
|   | APPROVED BY<br>DFRISIELLO  | 12/13/2010 | SIZE<br><b>A</b>                                    | FSCM NO.<br><b>43321</b> |  |
| PROJECTION<br>  | COLOR VARIATIONS MAY OCCUR |            | SCALE: NONE   | CAD FILE: BAC526.SLDDRW  |  |