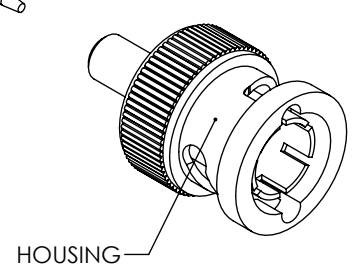
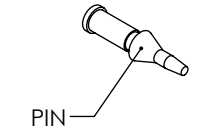
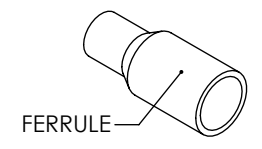
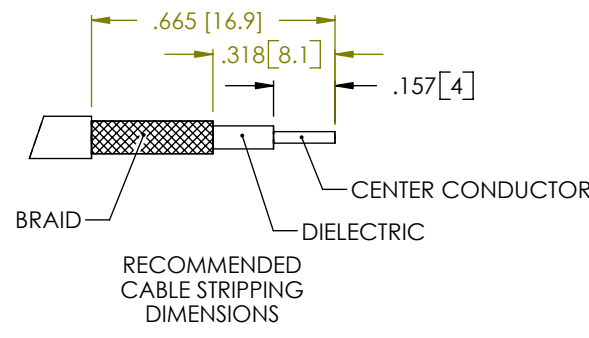
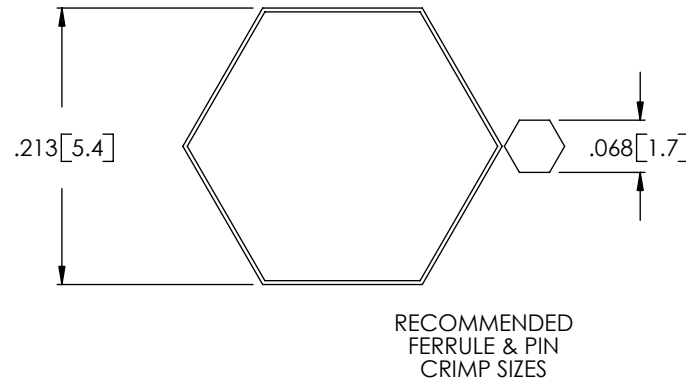
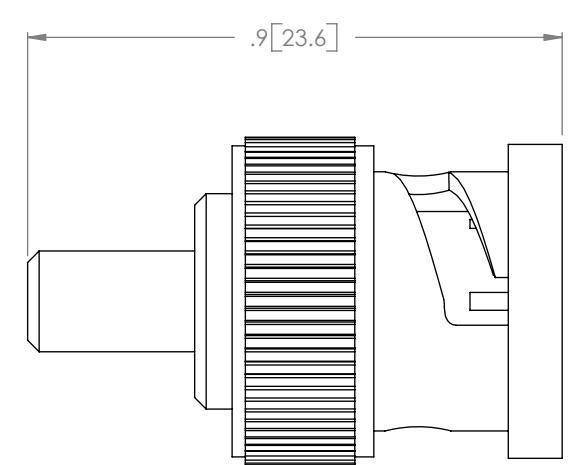
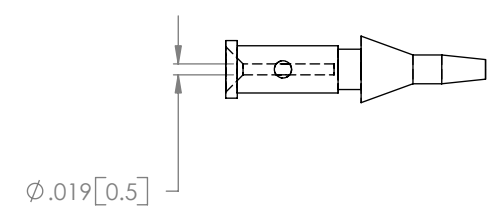
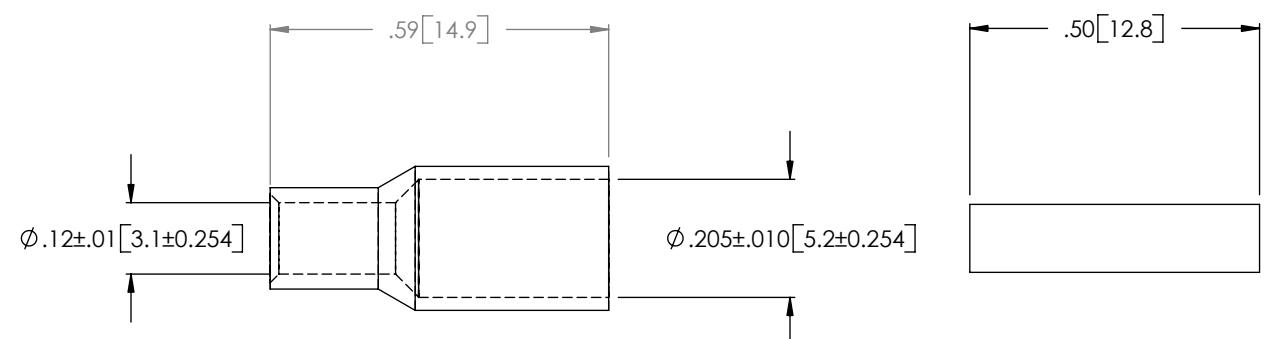


THE INFORMATION CONTAINED IN THIS DRAWING IS THE SOLE PROPERTY OF L-COM, INC. ANY REPRODUCTIONS IN PART OR WHOLE WITHOUT THE WRITTEN PERMISSION OF L-COM, INC. IS PROHIBITED.

REVISIONS			
REV	DESCRIPTION	DATE	CHANGED BY
G	ECN 3165: UPDATE DWG FORMAT	1/21/08	D.GRIFFIN



NOTES:

**MATERIAL:**  
 BODY: BRASS  
 FERRULE: BRASS OR COPPER ALLOY  
 PIN: BRASS  
 SLEEVE: ACETAL  
 INSULATOR: ACETAL

**FINISH:**  
 BODY: NICKEL PLATE  
 FERRULE: NICKEL PLATE  
 PIN: GOLD PLATE

**ELECTRICAL:**  
 IMPEDANCE: 75 OHM

**PACKAGING:**  
 INDIVIDUALLY PACKAGE EACH ASSEMBLY UTILIZING APPROPRIATE SIZED BAG

**APPLICATION:**  
 RG187 COAX CABLE ASSEMBLIES

**RoHS Compliant** ✓

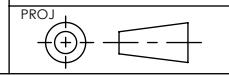
UNLESS OTHERWISE SPECIFIED, DIMENSIONS ARE IN INCHES [mm] TOLERANCES TO BE:  
 .X ±.1 [2.5] ANGLES ±2°  
 .XX ±.01 [.25]  
 .XXX ±.005 [.13]

OVERALL CABLE LENGTH TOL:  
 ≤ 60 [1524] +3 [76.2] / -0  
 > 60 [1524] +5% / -0%

APPROVALS	DATE
DRAWN BY C.MCCORMICK	02/11/2002
CHECKED BY D.PARHAM	02/11/2002
APPROVED BY R.CARRICK	02/11/2002

**L-com** 45 BEECHWOOD DRIVE  
 NORTH ANDOVER, MA 01845

CATEGORY: COAXIAL  
 PRODUCT DESCRIPTION: CONN 75 OHM BNC M RG187/CTL CA



SIZE	FSCM NO.	DWG. NO.	REV.
<b>B</b>	<b>43321</b>	<b>BAC836B-87</b>	<b>G</b>