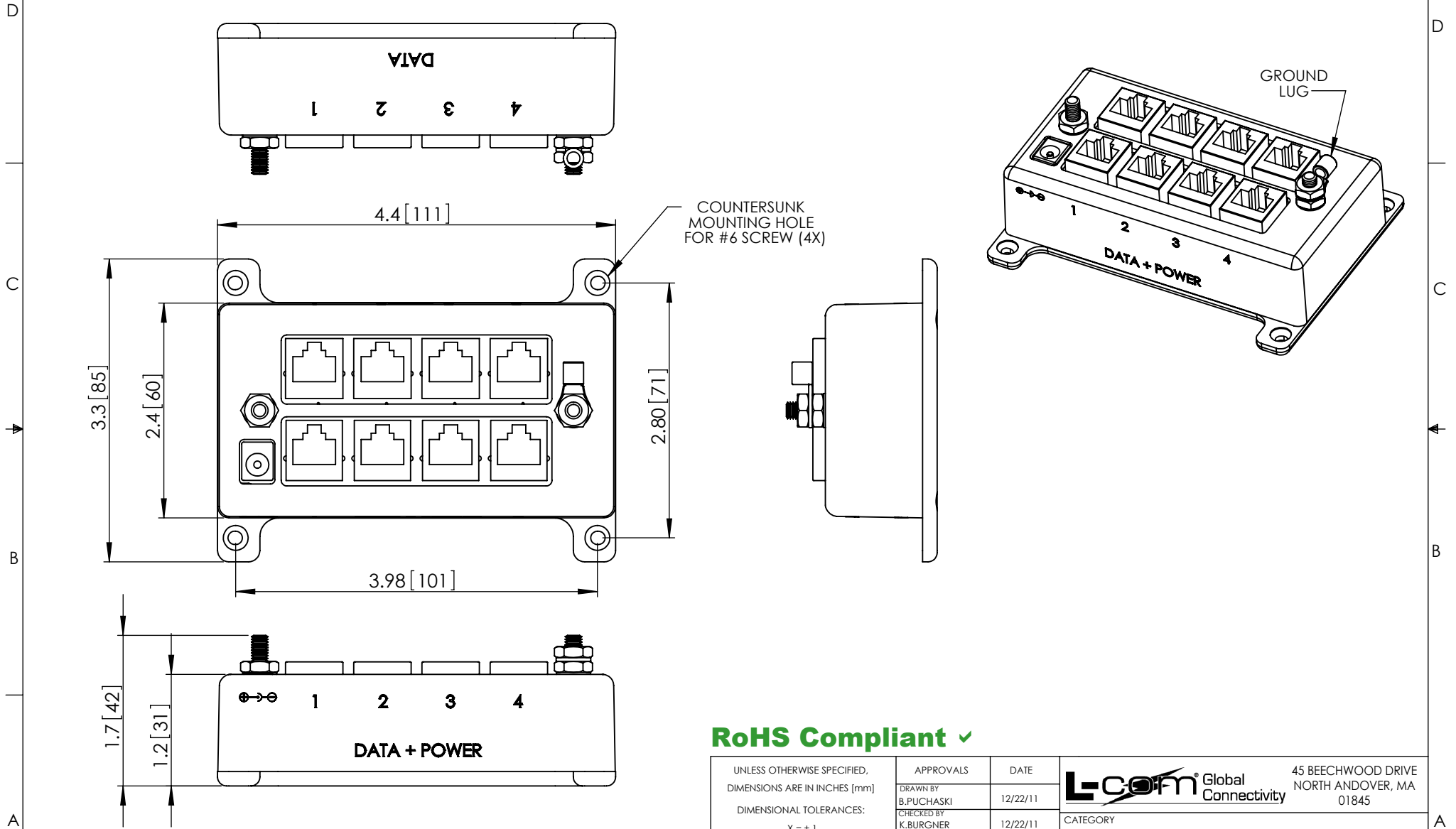


THE INFORMATION CONTAINED IN THIS DRAWING IS THE SOLE PROPERTY OF L-COM, INC. ANY REPRODUCTION IN PART OR WHOLE WITHOUT THE WRITTEN PERMISSION OF L-COM, INC. IS PROHIBITED.

REVISIONS			
REV	DESCRIPTION	DATE	APPROVED
A	INITIAL RELEASE	12/23/11	D.GRIFFIN



COUNTERSUNK MOUNTING HOLE FOR #6 SCREW (4X)


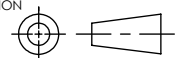
GROUND LUG

DATA + POWER

DATA + POWER

NOTE:
 1- COMPONENTS SHALL BE INDIVIDUALLY PACKAGED IN ACCORDANCE WITH L-COM SPECIFICATION PKG-00012
 - ALL DIMENSIONS FOR REFERENCE -

RoHS Compliant ✓

UNLESS OTHERWISE SPECIFIED, DIMENSIONS ARE IN INCHES [mm] DIMENSIONAL TOLERANCES: .X = ±.1 .XX = ±.01 .XXX = ±.005 ANGULAR TOLERANCES: ALL = ± 1°	APPROVALS	DATE	 45 BEECHWOOD DRIVE NORTH ANDOVER, MA 01845
	DRAWN BY B.PUCHASKI	12/22/11	
PROJECTION 	CHECKED BY K.BURGNER	12/22/11	CATEGORY POE
	APPROVED BY K.BURGNER	12/22/11	PRODUCT DESCRIPTION BT-CAT6-P4 FOUR PORT DC INJECTOR
	CONFIGURATION DETAILS OF UNDIMENSIONED FEATURES MAY VARY	SIZE A	FSCM NO. 43321
	COLOR VARIATIONS MAY OCCUR	DWG. NO. BT-CAT6-P4	REV. A
	SCALE: NONE	CAD FILE: BT-CAT6-P4.SLDDRW	SHEET 1 OF 1