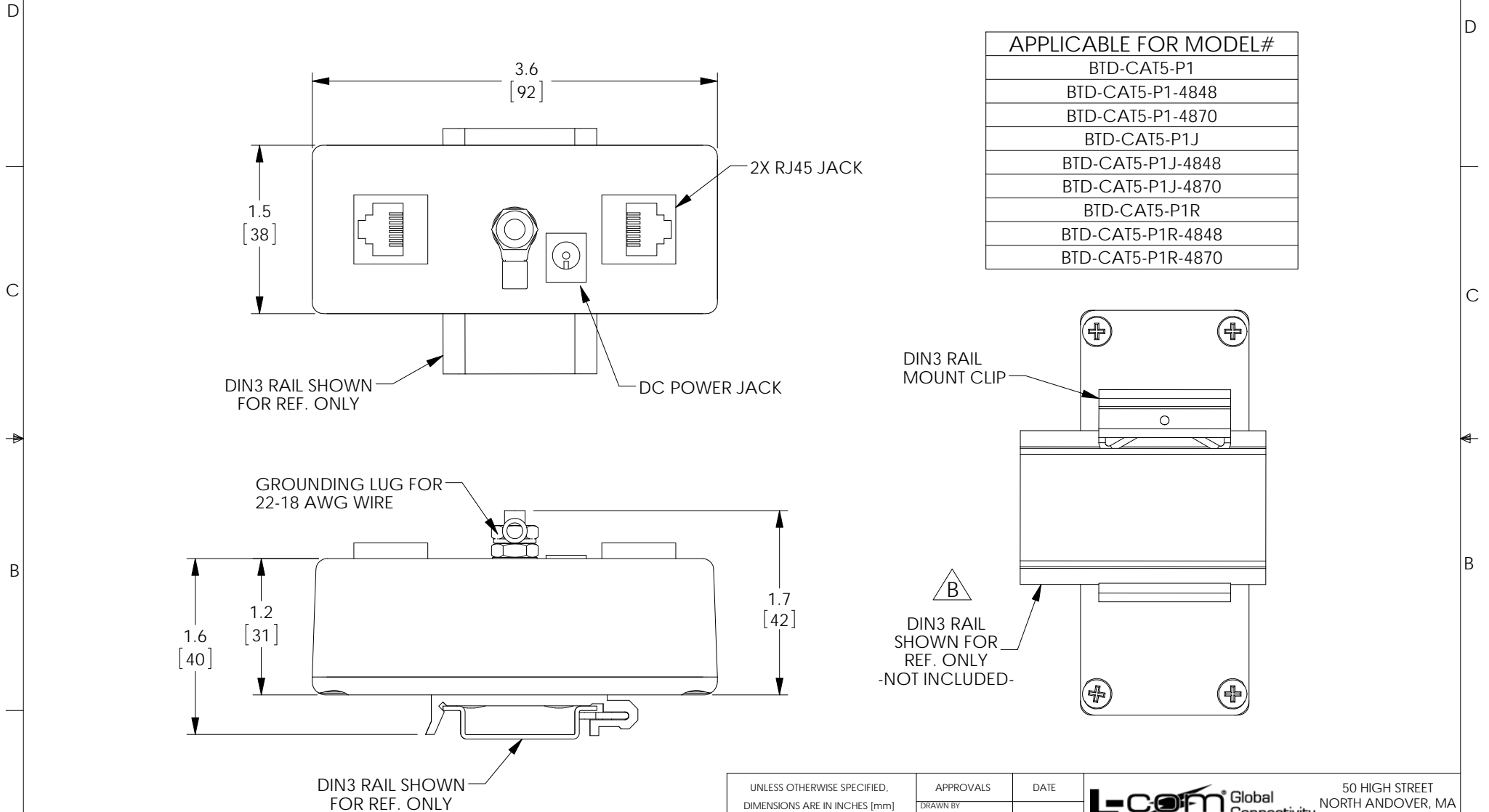


THE INFORMATION CONTAINED IN THIS DRAWING IS THE SOLE PROPERTY OF L-COM, INC. ANY REPRODUCTION IN PART OR WHOLE WITHOUT THE WRITTEN PERMISSION OF L-COM, INC. IS PROHIBITED.

REVISIONS			
REV	DESCRIPTION	DATE	APPROVED
A	INITIAL RELEASE	7/30/14	D.GRIFFIN
B	ECN 8983 ADD CALL-OUT TO DIN3 RAIL - FOR REF - NOT INCLUDED	11/09/17	B.PUCHASKI



APPLICABLE FOR MODEL#
BTD-CAT5-P1
BTD-CAT5-P1-4848
BTD-CAT5-P1-4870
BTD-CAT5-P1J
BTD-CAT5-P1J-4848
BTD-CAT5-P1J-4870
BTD-CAT5-P1R
BTD-CAT5-P1R-4848
BTD-CAT5-P1R-4870

NOTES:

COMPONENT ASSEMBLY SHALL BE INDIVIDUALLY PACKAGED IN ACCORDANCE WITH L-COM SPECIFICATION PKG-00012.

REGULATORY COMPLIANCE:
CE2011/65/EU(RoHS DIRECTIVE)

UNLESS OTHERWISE SPECIFIED, DIMENSIONS ARE IN INCHES [mm] DIMENSIONAL TOLERANCES: .X = ±.1 [2.54] .XX = ±.01 [25] .XXX = ±.005 [13] ANGULAR TOLERANCES: ALL = ± 1°	APPROVALS	DATE			50 HIGH STREET NORTH ANDOVER, MA 01845	
	DRAWN BY B.PUCHASKI	07/29/14			CATEGORY POWER OVER ETHERNET	
	PROJECTION 	CHECKED BY K.BURGNER	07/29/14	PRODUCT DESCRIPTION BT-CAT5-Px SERIES PoE INJECTOR		REV. B
	APPROVED BY P.PESA	07/29/14	SIZE A	FSCM NO. 43321	DWG. NO. BTD-CAT5-PX	SCALE: NONE CAD FILE: BTD-CAT5-PX.SLDDRW SHEET 1 OF 1