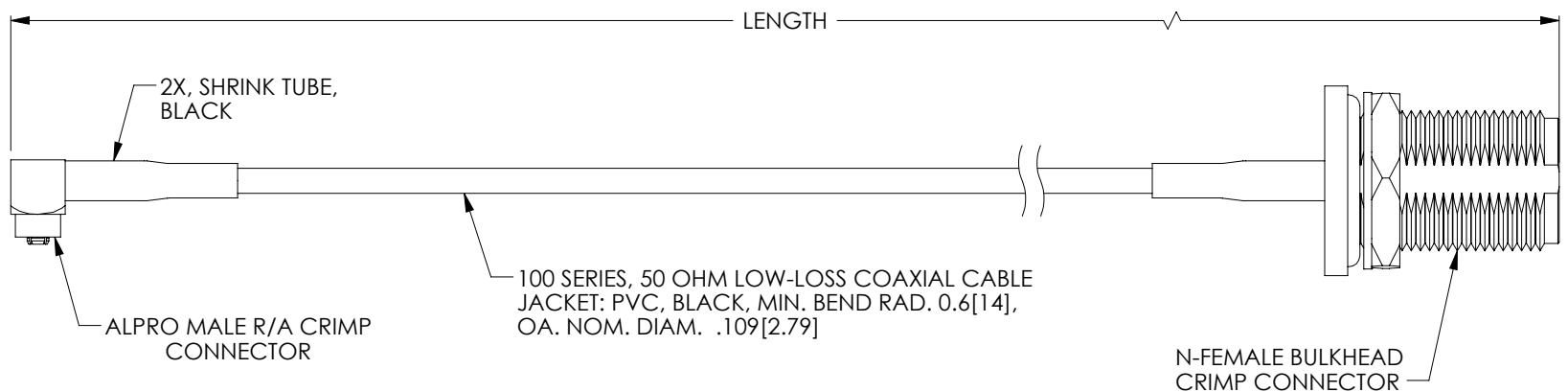
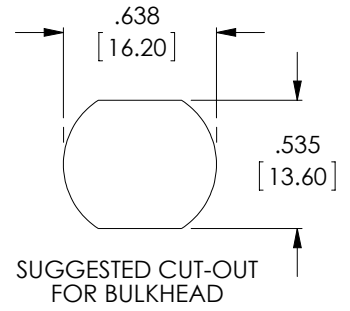


THE INFORMATION CONTAINED IN THIS DRAWING IS THE SOLE PROPERTY OF L-COM, INC. ANY REPRODUCTION IN PART OR WHOLE WITHOUT THE WRITTEN PERMISSION OF L-COM, INC. IS PROHIBITED.

REVISIONS			
REV	DESCRIPTION	DATE	APPROVED
A	INITIAL RELEASE	12/30/13	D.GRIFFIN



LENGTH CODE CHART		
CABLE# & LENGTH	LENGTH SYMBOL	EXAMPLES OF PART# USED
CA-AMNFBCXXX	WHERE XXX = LENGTH IN FEET	CA-AMNFBC010 (10 FEET)
CA-AMNFBCNXX	WHERE NXX = LENGTH IN INCHES	CA-AMNFBCN16 (16 INCHES)
CA-AMNFBCMXX	WHERE MXX = LENGTH IN METERS	CA-AMNFBCM07 (7 METERS)
CA-AMNFBCXMX	WHERE XMX = LENGTH IN DECIMAL METERS	CA-AMNFBC3M5 (3.5 METERS)



NOTES:

1. CABLE ASSEMBLY SHALL BE TESTED FOR CONTINUITY.
2. CABLE ASSEMBLY SHALL RECEIVE INSERTION LOSS TEST PER L-COM SPECIFICATIONS.
3. CABLE ASSEMBLY SHALL BE INDIVIDUALLY PACKAGED IN ACCORDANCE WITH L-COM SPECIFICATION PS-0031.

REGULATORY COMPLIANCE:
CE2011/65/EU(RoHS DIRECTIVE)

UNLESS OTHERWISE SPECIFIED, DIMENSIONS ARE IN INCHES [mm] OVERALL CABLE LENGTH TOLERANCE: ≤12 [305] = +1 [25] / -0 >12 [305] ≤60 [1524] = +2 [51] / -0 >60 [1524] ≤120 [3048] = +4 [102] / -0 >120 [3048] ≤300 [7620] = +6 [152] / -0 >300 [7620] = +5% / -0% ALL OTHER DIMENSIONAL TOLERANCES: .X = ± .2 [5.08] .XX = ± .02 [5.1] .XXX = ±.005 [1.3]	APPROVALS DRAWN BY B.PUCHASKI	DATE 12/30/13		45 BEECHWOOD DRIVE NORTH ANDOVER, MA 01845		
	CHECKED BY P. PESA	DATE 12/30/13		CATEGORY COAXIAL		
	APPROVED BY P. PESA	DATE 12/30/13	PRODUCT DESCRIPTION CA,CA100 ALPROX/NFB			
	PROJECTION 	CONFIGURATION DETAILS OF UNDIMENSIONED FEATURES MAY VARY	COLOR VARIATIONS MAY OCCUR	SIZE A	FSCM NO. 43321	DWG. NO. CA-AMNFBC
SCALE: NONE			CAD FILE: CA-AMNFBC.SLDDRW		SHEET 1 OF 1	