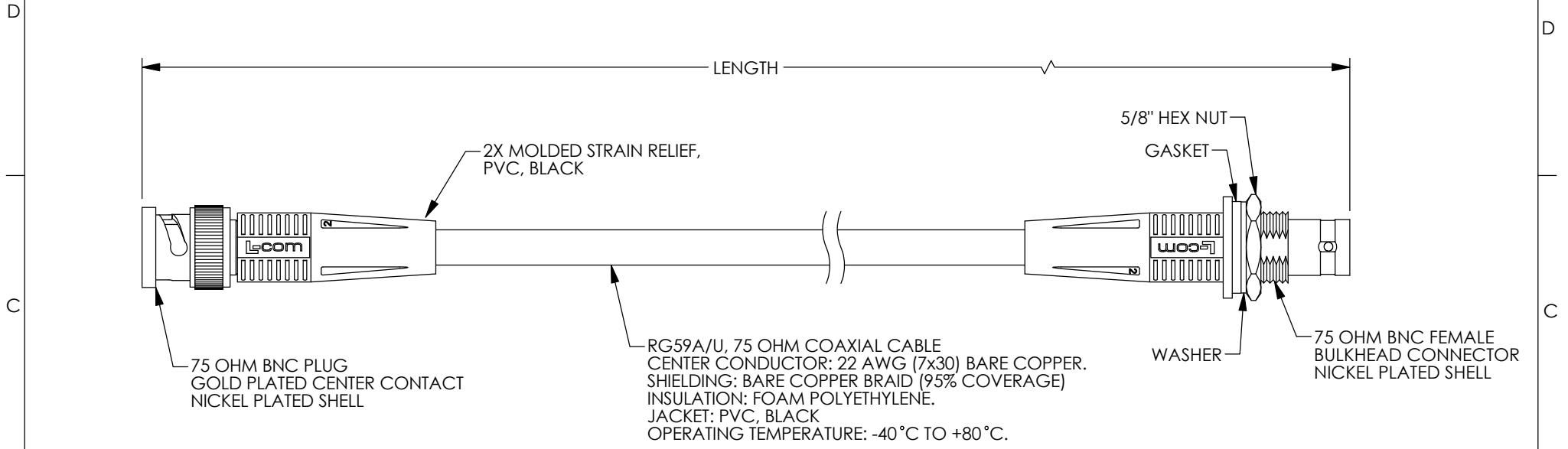
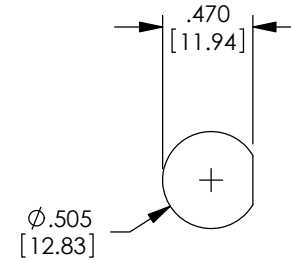


THE INFORMATION CONTAINED IN THIS DRAWING IS THE SOLE PROPERTY OF L-COM, INC. ANY REPRODUCTION IN PART OR WHOLE WITHOUT THE WRITTEN PERMISSION OF L-COM, INC. IS PROHIBITED.

REVISIONS			
REV	DESCRIPTION	DATE	APPROVED
A	INITIAL RELEASE	7/5/07	D.FRISIELLO
B	ECN #2945: ADDED GASKET TO BULKHEAD CONNECTOR.	8/14/07	D.FRISIELLO
C	ECN 8058: REVISED NOTES, FORMAT, ROHS	8/18/15	D.FRISIELLO



MODEL NUMBER	LENGTH FEET [METERS]
CC59A-MF-1	1.0 [.30]
CC59A-MF-3	3.0 [.91]
CC59A-MF-6	6.0 [1.83]
CC59A-MF-10	10.0 [3.05]
CC59A-MF-15	15.0 [4.57]
CC59A-MF-25	25.0 [7.62]
CC59A-MF-50	50.0 [15.24]



RECOMMENDED
PANEL OPENING



NOTES:

- CABLE ASSEMBLY SHALL BE TESTED FOR CONTINUITY.
- CABLE ASSEMBLY SHALL BE INDIVIDUALLY PACKAGED IN ACCORDANCE WITH L-COM SPECIFICATION PS-0031.

REGULATORY COMPLIANCE:
CE2011/65/EU (RoHS DIRECTIVE)



UNLESS OTHERWISE SPECIFIED, DIMENSIONS ARE IN INCHES [mm] OVERALL CABLE LENGTH TOLERANCE: ≤12 [305] = +1 [25] / -0 >12 [305] ≤60 [1524] = +2 [51] / -0 >60 [1524] ≤120 [3048] = +4 [102] / -0 >120 [3048] ≤300 [7620] = +6 [152] / -0 >300 [7620] = +5% / -0% ALL OTHER DIMENSIONAL TOLERANCES: .X = ± .2 [5.08] .XX = ± .02 [51] .XXX = ±.005 [1.27]	APPROVALS	DATE		45 BEECHWOOD DRIVE NORTH ANDOVER, MA 01845
	DRAWN BY D.FRISIELLO	6/29/07		
	CHECKED BY D.DOLCE	6/29/07	CATEGORY AUDIO/VIDEO	
	APPROVED BY D.DOLCE	6/29/07	PRODUCT DESCRIPTION CA BNC M/BNC F BHD RG59A/U	
PROJECTION	CONFIGURATION DETAILS OF UNDIMENSIONED FEATURES MAY VARY	COLOR VARIATIONS MAY OCCUR	SIZE A	FSCM NO. 43321
			DWG. NO. CC59A-MF	REV. C
			SCALE: NONE	CAD FILE: CC59A-MF.SLDDRW
				SHEET 1 OF 1