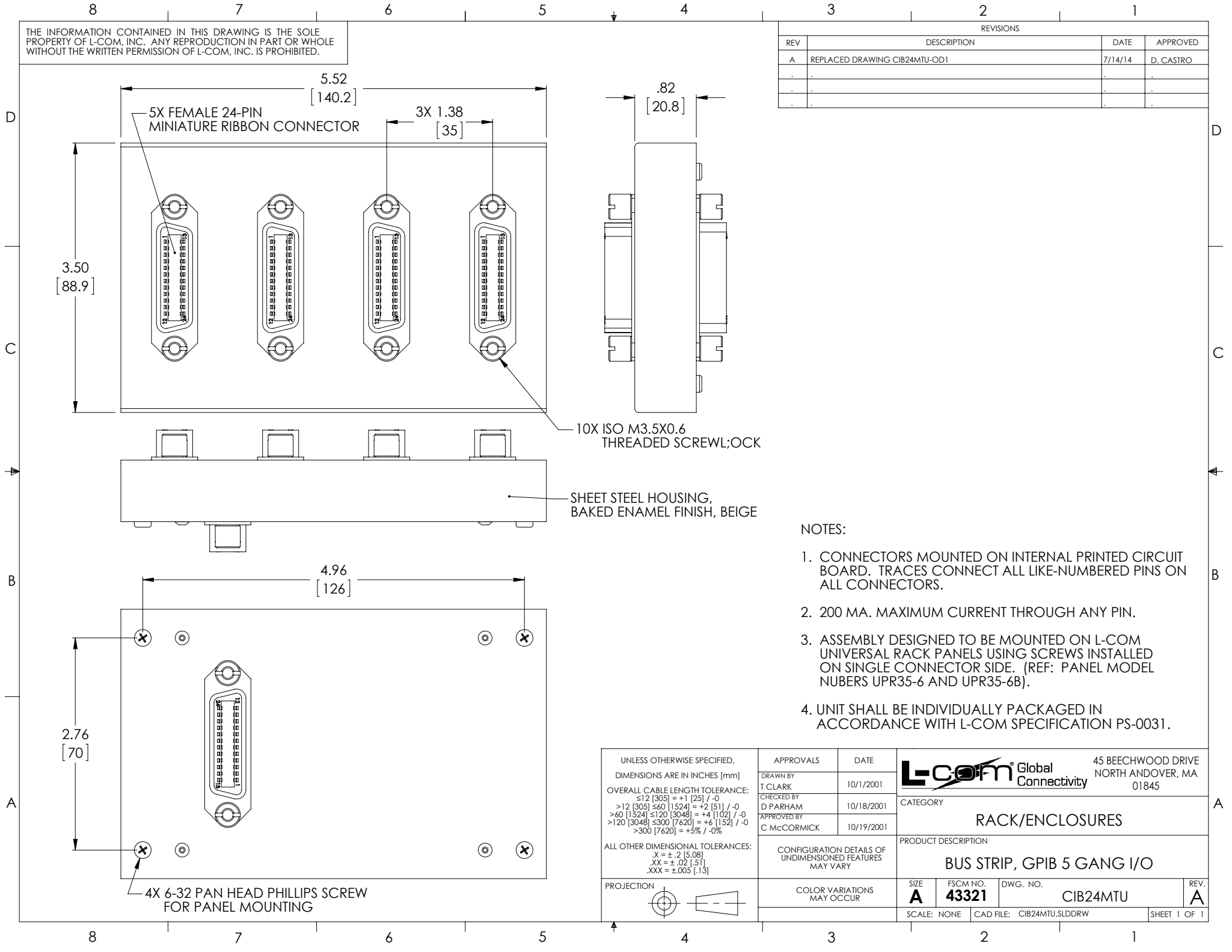


THE INFORMATION CONTAINED IN THIS DRAWING IS THE SOLE PROPERTY OF L-COM, INC. ANY REPRODUCTION IN PART OR WHOLE WITHOUT THE WRITTEN PERMISSION OF L-COM, INC. IS PROHIBITED.

REVISIONS			
REV	DESCRIPTION	DATE	APPROVED
A	REPLACED DRAWING CIB24MTU-OD1	7/14/14	D. CASTRO
.	.	.	.
.	.	.	.
.	.	.	.



NOTES:

- CONNECTORS MOUNTED ON INTERNAL PRINTED CIRCUIT BOARD. TRACES CONNECT ALL LIKE-NUMBERED PINS ON ALL CONNECTORS.
- 200 MA. MAXIMUM CURRENT THROUGH ANY PIN.
- ASSEMBLY DESIGNED TO BE MOUNTED ON L-COM UNIVERSAL RACK PANELS USING SCREWS INSTALLED ON SINGLE CONNECTOR SIDE. (REF: PANEL MODEL NUMBERS UPR35-6 AND UPR35-6B).
- UNIT SHALL BE INDIVIDUALLY PACKAGED IN ACCORDANCE WITH L-COM SPECIFICATION PS-0031.

UNLESS OTHERWISE SPECIFIED, DIMENSIONS ARE IN INCHES [mm] OVERALL CABLE LENGTH TOLERANCE: ≤12 [305] = +1 [25] / -0 >12 [305] ≤60 [1524] = +2 [51] / -0 >60 [1524] ≤120 [3048] = +4 [102] / -0 >120 [3048] ≤300 [7620] = +6 [152] / -0 >300 [7620] = +5% / -0% ALL OTHER DIMENSIONAL TOLERANCES: .X = ±.2 [5.08] .XX = ±.02 [1.51] .XXX = ±.005 [1.13]	APPROVALS DRAWN BY T CLARK CHECKED BY D PARHAM APPROVED BY C. McCORMICK	DATE 10/1/2001 10/18/2001 10/19/2001	45 BEECHWOOD DRIVE NORTH ANDOVER, MA 01845	
	CONFIGURATION DETAILS OF UNDIMENSIONED FEATURES MAY VARY COLOR VARIATIONS MAY OCCUR	CATEGORY RACK/ENCLOSURES		PRODUCT DESCRIPTION BUS STRIP, GPIB 5 GANG I/O
PROJECTION 	SIZE A	FSCM NO. 43321	DWG. NO. CIB24MTU	REV. A
SCALE: NONE		CAD FILE: CIB24MTU.SLDDRW		SHEET 1 OF 1