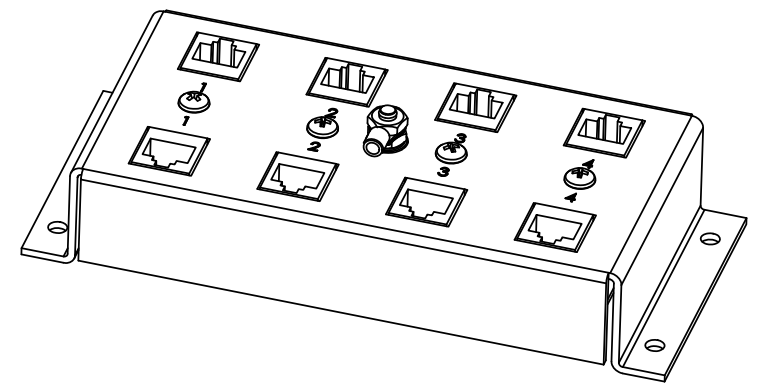
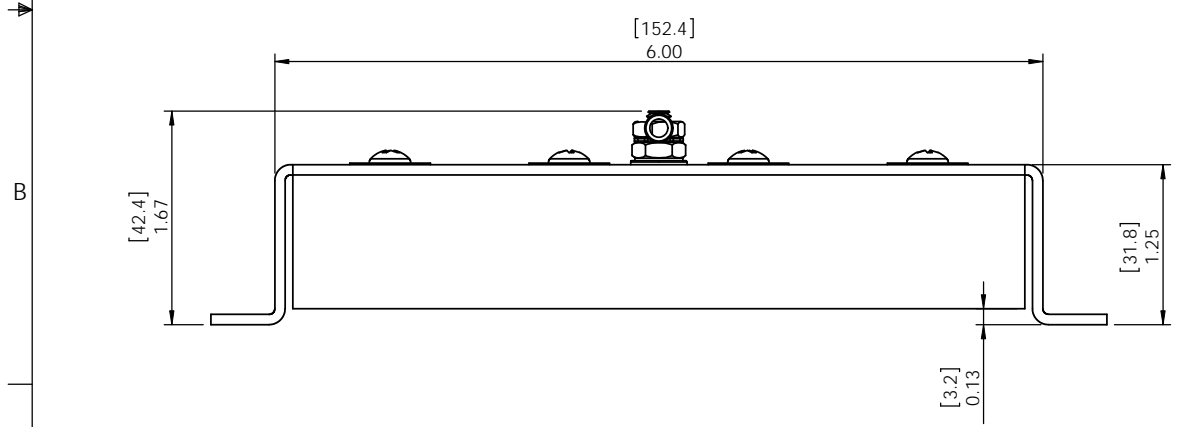
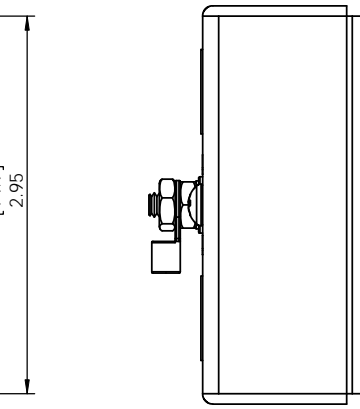
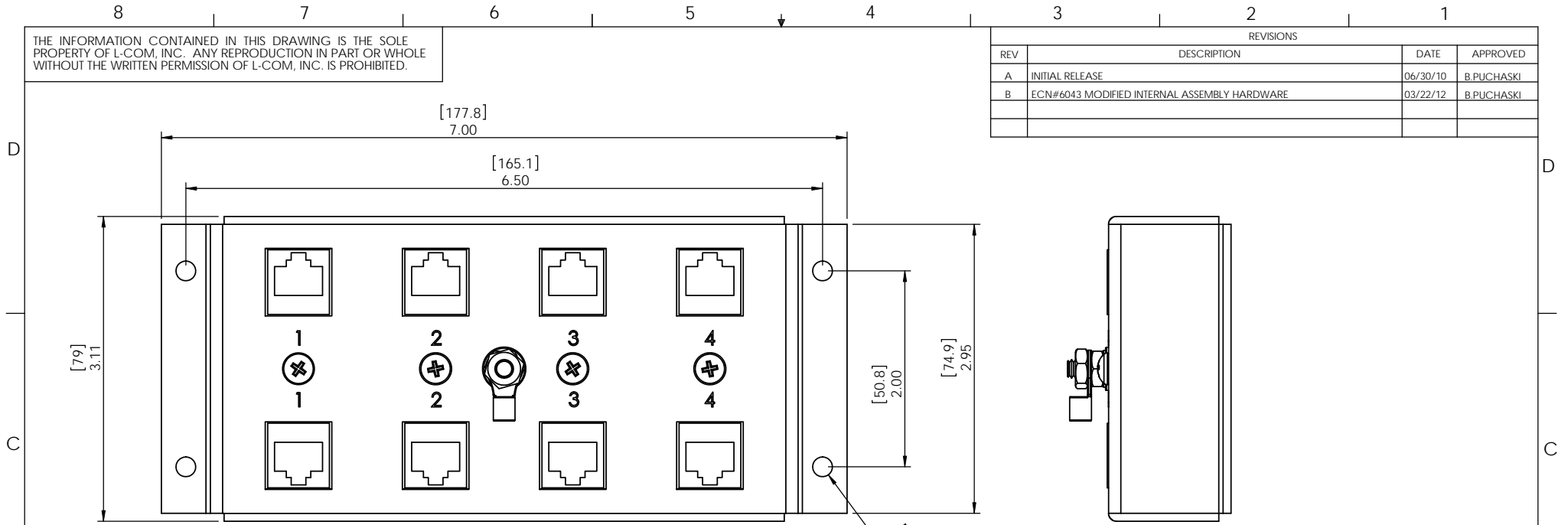


THE INFORMATION CONTAINED IN THIS DRAWING IS THE SOLE PROPERTY OF L-COM, INC. ANY REPRODUCTION IN PART OR WHOLE WITHOUT THE WRITTEN PERMISSION OF L-COM, INC. IS PROHIBITED.

REVISIONS			
REV	DESCRIPTION	DATE	APPROVED
A	INITIAL RELEASE	06/30/10	B.PUCHASKI
B	ECN#6043 MODIFIED INTERNAL ASSEMBLY HARDWARE	03/22/12	B.PUCHASKI



NOTE:  
1- COMPONENTS SHALL BE INDIVIDUALLY PACKAGED  
IN ACCORDANCE WITH L-COM SPECIFICATION PKG-00012

RoHS Compliant ✓

UNLESS OTHERWISE SPECIFIED, DIMENSIONS ARE IN INCHES [mm]  DIMENSIONAL TOLERANCES: .X = ±.1 .XX = ±.01 .XXX = ±.005  ANGULAR TOLERANCES: ALL = ± 1°  PROJECTION	APPROVALS B.PUCHASKI	DATE 06/30/10		45 BEECHWOOD DRIVE NORTH ANDOVER, MA 01845	
	CHECKED BY K.BURGNER	DATE 06/30/10		CATEGORY LIGHTNING PROTECTORS	
	APPROVED BY K.BURGNER	DATE 06/30/10	PRODUCT DESCRIPTION 4-PORT CAT5 INDOOR LIGHTNING PROTECTOR		
	CONFIGURATION DETAILS OF UNDIMENSIONED FEATURES MAY VARY	COLOR VARIATIONS MAY OCCUR	SIZE <b>A</b>	FSCM NO. <b>43321</b>	DWG. NO. <b>CMS-5-CAT5-4</b>
		SCALE: NONE	CAD FILE: CMS-5-CAT5-4.SLDRW	SHEET 1 OF 1	