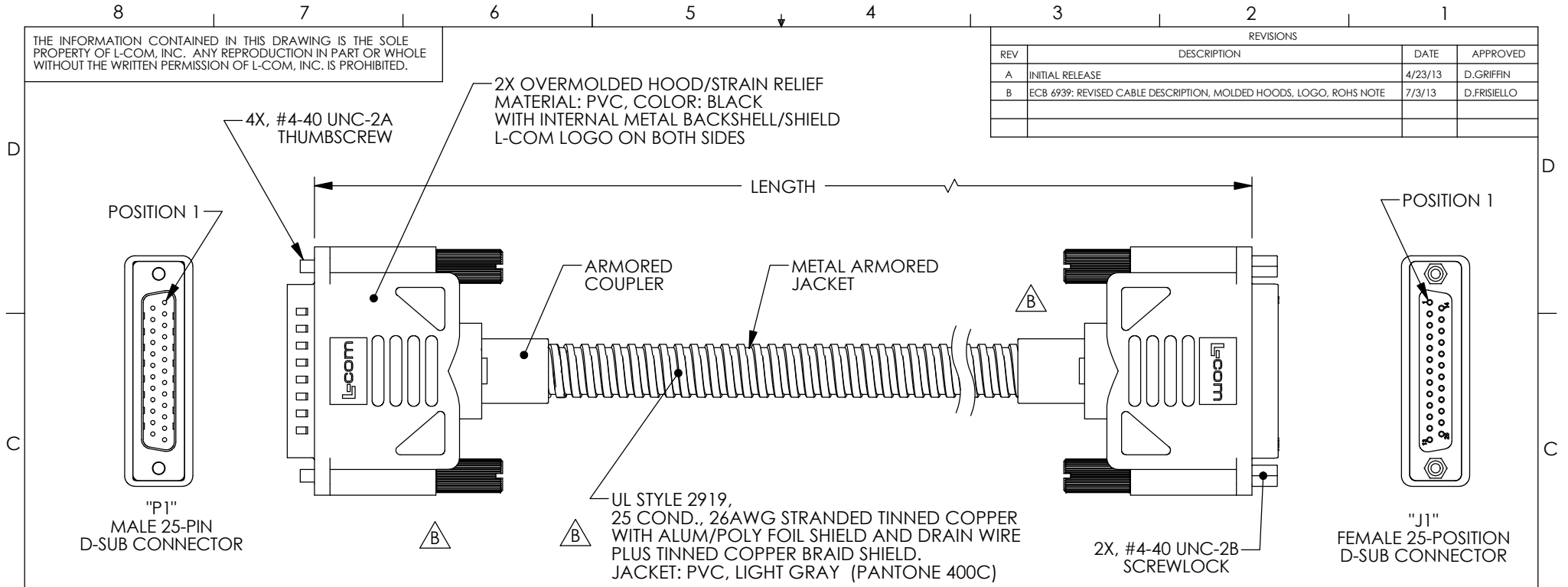


THE INFORMATION CONTAINED IN THIS DRAWING IS THE SOLE PROPERTY OF L-COM, INC. ANY REPRODUCTION IN PART OR WHOLE WITHOUT THE WRITTEN PERMISSION OF L-COM, INC. IS PROHIBITED.

REVISIONS			
REV	DESCRIPTION	DATE	APPROVED
A	INITIAL RELEASE	4/23/13	D.GRIFFIN
B	ECB 6939: REVISED CABLE DESCRIPTION, MOLDED HOODS, LOGO, ROHS NOTE	7/3/13	D.FRISIELLO



"P1"	WIRE COLOR	"J1"
1	BLACK	1
2	BROWN	2
3	RED	3
4	ORANGE	4
5	YELLOW	5
6	GREEN	6
7	BLUE	7
8	VIOLET	8
9	GRAY	9
10	WHITE	10
11	PINK	11
12	PINK/BLACK	12
13	LIGHT GREEN	13
14	BLACK/WHITE	14
15	BROWN/WHITE	15
16	RED/WHITE	16
17	ORANGE/WHITE	17
18	GREEN/WHITE	18
19	BLUE/WHITE	19
20	VIOLET/WHITE	20
21	RED/BLACK	21
22	ORANGE/BLACK	22
23	YELLOW/BLACK	23
24	GREEN/BLACK	24
25	GRAY/BLACK	25
SHELL	DRAIN WIRE	SHELL

MODEL NUMBER	LENGTH	
	FEET	METERS
CSMT25MF-2.5	2.5	.76
CSMT25MF-5	5.0	1.52
CSMT25MF-10	10.0	3.05
CSMT25MF-15	15.0	4.57
CSMT25MF-25	25.0	7.62
CSMT25MF-50	50.0	15.24

- NOTES:**
- CABLE ASSEMBLY SHALL BE TESTED FOR CONTINUITY.
  - CABLE ASSEMBLY SHALL BE INDIVIDUALLY PACKAGED IN ACCORDANCE WITH L-COM SPECIFICATION PS-0031.

**REGULATORY COMPLIANCE:**  
ROHS, CE

UNLESS OTHERWISE SPECIFIED, DIMENSIONS ARE IN INCHES [mm] OVERALL CABLE LENGTH TOLERANCE: $\leq 12$ [305] = +1 [25] / -0 $>12$ [305] $\leq 60$ [1524] = +2 [51] / -0 $>60$ [1524] $\leq 120$ [3048] = +4 [102] / -0 $>120$ [3048] $\leq 300$ [7620] = +6 [152] / -0 $>300$ [7620] = +3% / -0% ALL OTHER DIMENSIONAL TOLERANCES: .X = ± .2 .XX = ± .02 .XXX = ± .005	APPROVALS DRAWN BY D.FRISIELLO CHECKED BY D.PARHAM APPROVED BY S.SMITH	DATE 5/11/11 5/11/11 5/11/11	45 BEECHWOOD DRIVE NORTH ANDOVER, MA 01845	
	CONFIGURATION DETAILS OF UNDIMENSIONED FEATURES MAY VARY			CATEGORY D-SUBMINIATURE
	PROJECTION 	COLOR VARIATIONS MAY OCCUR	SIZE <b>A</b>	FSCM NO. <b>43321</b>
	DWG. NO. <b>CSMT25MF</b>		REV. <b>B</b>	SCALE: NONE CAD FILE: CSMT25MF.SLDDRW SHEET 1 OF 1