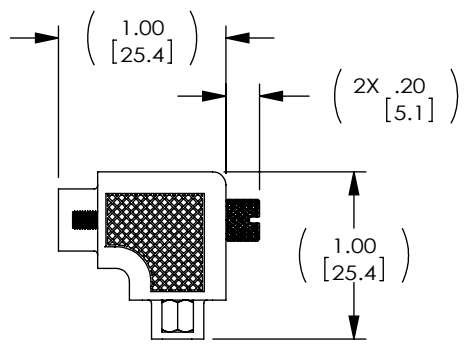
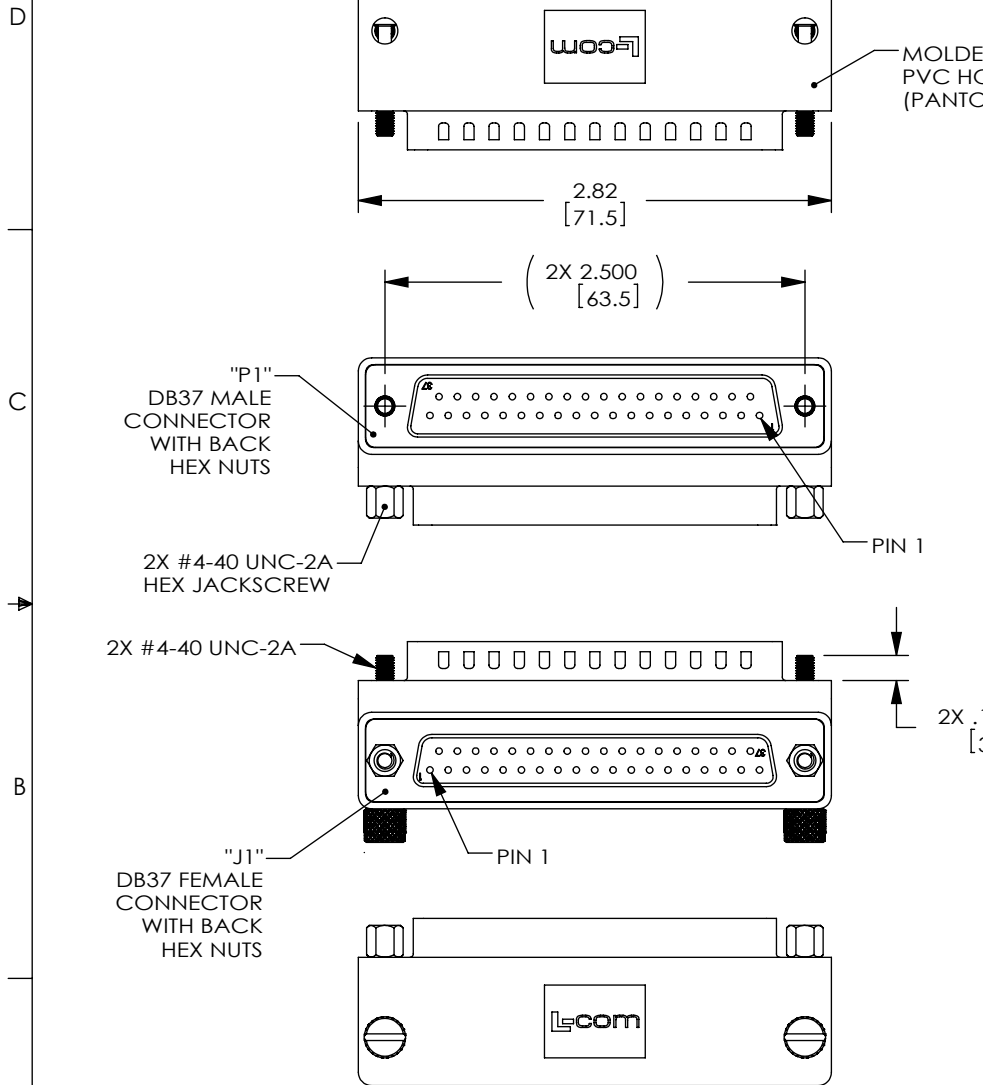
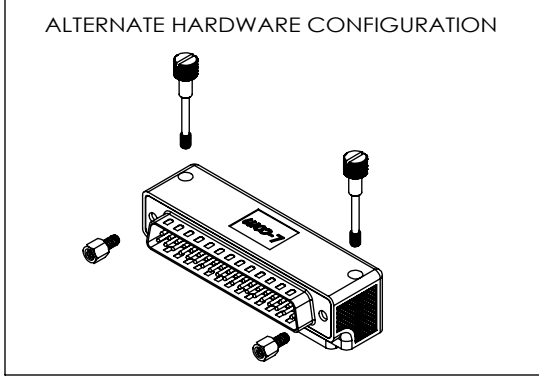
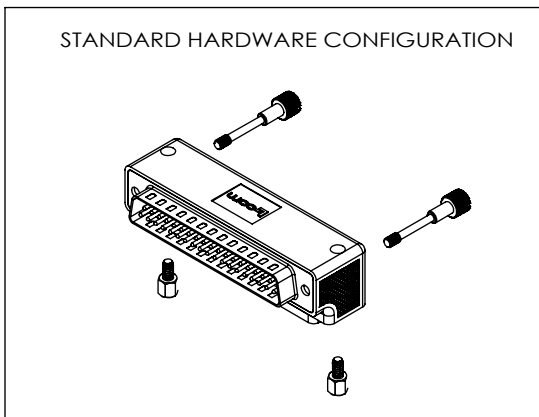


THE INFORMATION CONTAINED IN THIS DRAWING IS THE SOLE PROPERTY OF L-COM, INC. ANY REPRODUCTION IN PART OR WHOLE WITHOUT THE WRITTEN PERMISSION OF L-COM, INC. IS PROHIBITED.

| REVISIONS | | | |
|-----------|---|----------|-----------|
| REV | DESCRIPTION | DATE | APPROVED |
| A | INITIAL RELEASE | 10/11/10 | D.GRIFFIN |
| B | ECN 8129: ADD OPERATING TEMP. RANGE, UPT ROHS, LOGO, DWG FORMAT | 10/16/15 | S.LI |
| | | | |
| | | | |



HARDWARE CONFIGURATIONS



- NOTES:**
- ADAPTER SHALL BE TESTED FOR CONTINUITY.
 - ADAPTER SHALL BE INDIVIDUALLY PACKAGED IN ACCORDANCE WITH L-COM SPECIFICATION PS-0031.
 - PRODUCT SHIPPED IN STANDARD HARDWARE CONFIGURATION SHOWN ABOVE AND IN EXPLODED VIEW.
 - ADAPTER IS WIRED STRAIGHT THROUGH FROM PIN TO LIKE-NUMBERED PIN.
 - OPERATING TEMPERATURE RANGE: -15 °C ~ +70 °C

REGULATORY COMPLIANCE:
CE2011/65/EU (RoHS DIRECTIVE)

| | | | | |
|--|--|------------------|----------------------------|--|
| UNLESS OTHERWISE SPECIFIED, DIMENSIONS ARE IN INCHES [mm] | APPROVALS | DATE | | 45 BEECHWOOD DRIVE NORTH ANDOVER, MA 01845 |
| | DRAWN BY D.FRISIELLO | 6/2/10 | | |
| OVERALL CABLE LENGTH TOLERANCE: ≤12 [305] = +1 [25] / -0 >12 [305] ≤60 [1524] = +2 [51] / -0 >60 [1524] ≤120 [3048] = +4 [102] / -0 >120 [3048] ≤300 [7620] = +6 [152] / -0 >300 [7620] = +5% / -0% | CHECKED BY C.BRAN | 6/2/10 | CATEGORY | |
| | APPROVED BY S.SMITH | 6/2/10 | D-SUBMINIATURE | |
| ALL OTHER DIMENSIONAL TOLERANCES: .X = ±.2 [5.08] .XX = ±.02 [51] .XXX = ±.005 [13] | CONFIGURATION DETAILS OF UNDIMENSIONED FEATURES MAY VARY | | PRODUCT DESCRIPTION | |
| PROJECTION | COLOR VARIATIONS MAY OCCUR | SIZE A | FSCM NO. 43321 | DWG. NO. DG9037MF3 |
| | REF | SCALE: NONE | CAD FILE: DG9037MF3.SLDDRW | REV. B |
| | | | | SHEET 1 OF 1 |

