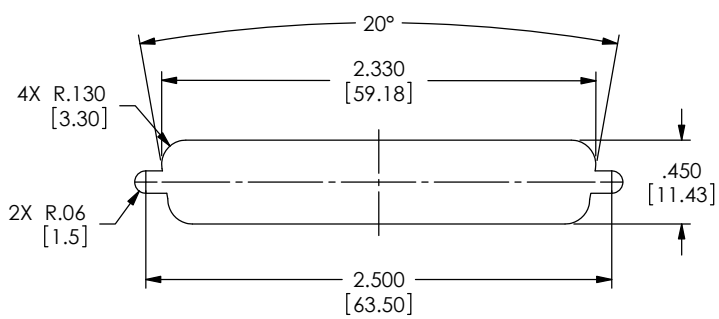


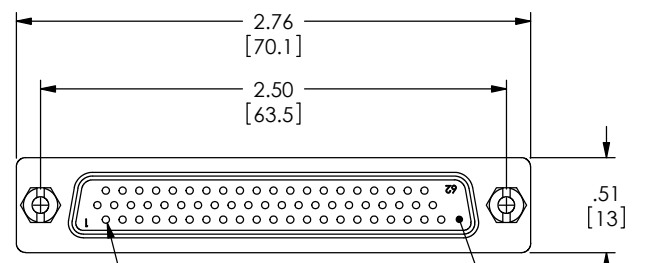
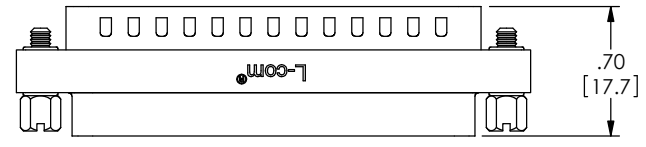
THE INFORMATION CONTAINED IN THIS DRAWING IS THE SOLE PROPERTY OF L-COM, INC. ANY REPRODUCTIONS IN PART OR WHOLE WITHOUT THE WRITTEN PERMISSION OF L-COM, INC. IS PROHIBITED.

REVISIONS			
REV	DESCRIPTION	DATE	CHANGED BY
F	ECN 4564: ADDED ROHS, UPDATED DRAWING AND NEW FORMAT	03/03/2010	DFRISIELLO
G	ECN 5937: ADDED NOTE FOR PANEL MOUNTING	01/24/2012	DFRISIELLO
H	ECN 10934: REVISED GENDER CHANGE TO SOCKET SAVER IN LABEL NOTES	01/21/2021	MBLACKWOOD

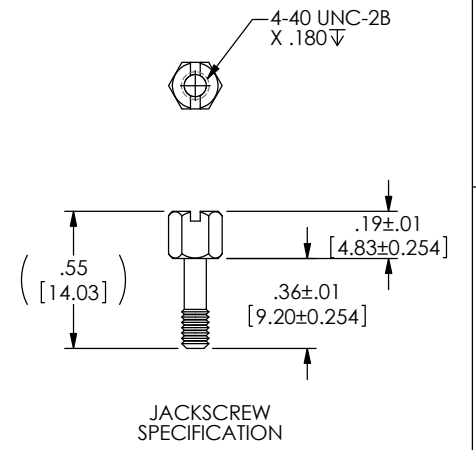


RECOMMENDED PANEL OPENING  
(MAX PANEL THICKNESS: 0.06")

NOTE: DIFFERENT STANDOFFS AND JACK SCREWS  
ARE REQUIRED FOR PANEL MOUNTING.  
SEE WWW.L-COM.COM OR MASTER CATALOG FOR DETAILS.



POSITION 1  
62 PIN FEMALE  
HIGH DENSITY  
D-SUB CONNECTOR



JACKSCREW  
SPECIFICATION

NOTES:

MATERIAL:  
SHELL: STEEL  
CONTACTS: COPPER ALLOY  
HARDWARE: BRASS  
INSULATOR: PBT FIBER REINFORCED (UL94V-0 RATED)

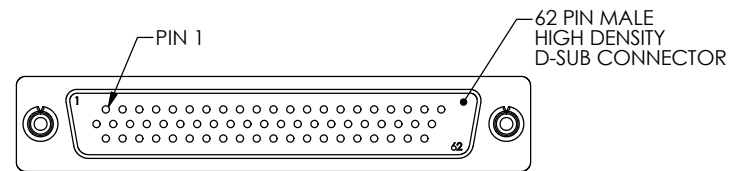
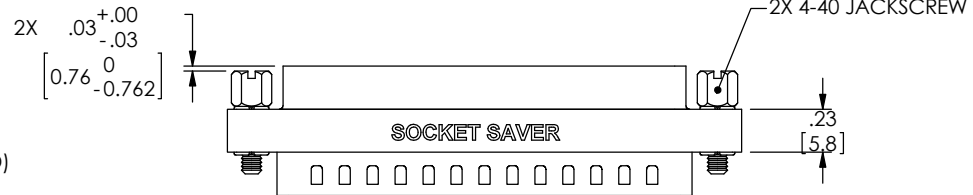
FINISH:  
SHELL: TIN/NICKEL PLATED  
CONTACTS: GOLD FLASH PLATED  
HARDWARE: NICKEL PLATED

ELECTRICAL:  
CURRENT RATING: 3 AMP

MISCELLANEOUS:  
OPERATING TEMPERATURE RANGE: -55°C TO +105°C.  
ALL CONTACTS ARE WIRED STRAIGHT THROUGH.  
COMPONENT SHALL BE TESTED FOR CONTINUITY.

LABELING:  
PANTONE 2945 BLUE. "L-COM" FONT MyriaMM REGULAR.  
"SOCKET SAVER" FONT ARIAL BOLD, TEXT HEIGHTS: .085"  
TEXT COLOR: WHITE.

PACKAGING:  
COMPONENT SHALL BE INDIVIDUALLY PACKAGED IN  
ACCORDANCE WITH L-COM SPECIFICATION PS-0031.



UNLESS OTHERWISE SPECIFIED, DIMENSIONS ARE IN INCHES (mm). OVERALL CABLE LENGTH TOLERANCE: ≤12 [305] = +1 [25] / -0 >12 [305] ≤60 [1524] = +2 [51] / -0 >60 [1524] ≤120 [3048] = +4 [102] / -0 >120 [3048] ≤300 [7620] = +6 [152] / -0 >300 [7620] = +5% / -0 ALL OTHER DIMENSIONAL TOLERANCES: .XX = ±.02 [5] FRACTIONS ± 1/32 .XXX = ±.005 [13] ANGLES ± 1°	APPROVALS	DATE	50 High Street, West Mill, North Andover, MA 01845 USA. Phone: 1.800.341.5266 1.978.682.6936		
	DRAWN BY D.PARHAM	03/01/2002			
	CHECKED BY T.CLAIRE	11/08/2001			
	APPROVED BY R.CARRICK	03/01/2002			
CONFIGURATION DETAILS OF UNDIMENSIONED FEATURES MAY VARY	CATEGORY D-SUBMINIATURE		PRODUCT DESCRIPTION ADPT, SKT SAVER HD62 SLIM M/F		
THIRD-ANGLE PROJECTION	COLOR VARIATIONS MAY OCCUR	SIZE B	CAGE CODE 43321	ITEM NO. DGBH62MF	REV. H
SCALE: NONE		CAD FILE: DGBH62MF.SLDRAW		SHEET 1 OF 1	