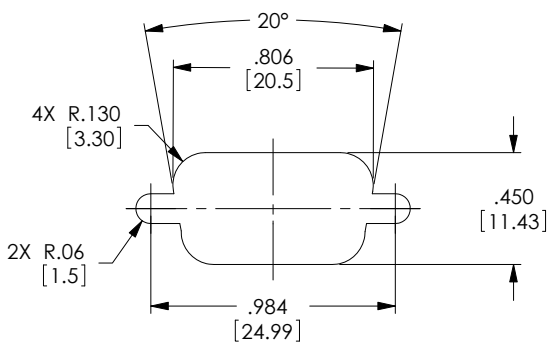
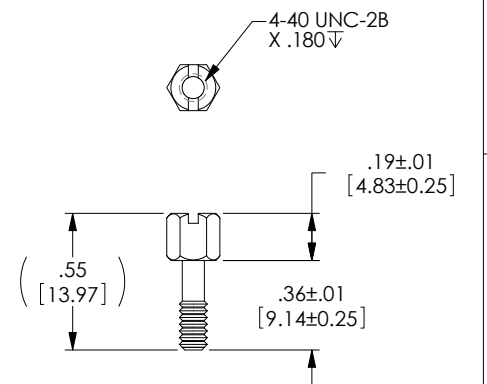
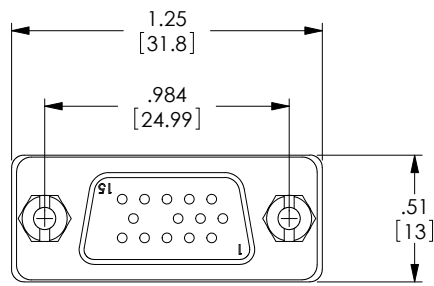
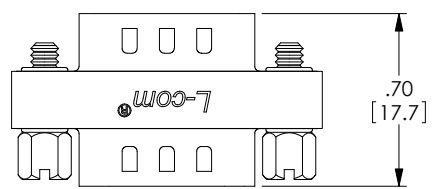


THE INFORMATION CONTAINED IN THIS DRAWING IS THE SOLE PROPERTY OF L-COM, INC. ANY REPRODUCTIONS IN PART OR WHOLE WITHOUT THE WRITTEN PERMISSION OF L-COM, INC. IS PROHIBITED.

REVISIONS			
REV	DESCRIPTION	DATE	CHANGED BY
A	DRAWING REPLACES DGBV15M-0D1	9/22/14	D.FRISIELLO



RECOMMENDED PANEL OPENING  
(MAX PANEL THICKNESS: 0.06")



JACKSCREW SPECIFICATION

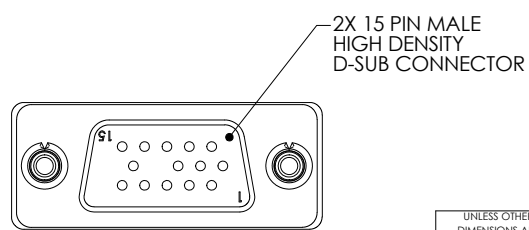
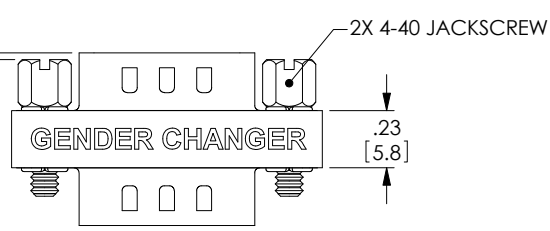
**NOTES:**  
 MATERIAL:  
 SHELL: STEEL  
 CONTACTS: COPPER ALLOY  
 HARDWARE: BRASS  
 INSULATOR: PBT FIBER REINFORCED (UL94V-0 RATED)  
 FINISH:  
 SHELL: TIN/NICKEL PLATED  
 CONTACTS: GOLD FLASH PLATED  
 HARDWARE: NICKEL PLATED  
 ELECTRICAL:  
 CURRENT RATING: 3 AMP  
 MISCELLANEOUS:  
 OPERATING TEMPERATURE RANGE: -55°C TO +105°C.  
 PIN 9 IS OMITTED.  
 ALL PINS ARE WIRED STRAIGHT THROUGH.  
 COMPONENT SHALL BE TESTED FOR CONTINUITY.

**LABELING:**  
 PANTONE 2945 BLUE. "L-COM" FONT MyriadMM ITALIC.  
 "GENDER CHANGER" FONT ARIAL BOLD, TEXT HEIGHTS; .085"  
 TEXT COLOR; WHITE.

**PACKAGING:**  
 COMPONENT SHALL BE INDIVIDUALLY PACKAGED IN ACCORDANCE WITH L-COM SPECIFICATION PS-0031.

**REGULATORY COMPLIANCE:**  
 CE2011/65/EU (RoHS DIRECTIVE)

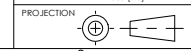
2X .03<sup>+0.00</sup>  
 0  
 -.03<sub>-0.762</sub> [0.69]



UNLESS OTHERWISE SPECIFIED, DIMENSIONS ARE IN INCHES (mm)  
 OVERALL CABLE LENGTH TOLERANCE:  
 ≤12 (305) ≤±1 (25) / -0  
 >12 (305) ≤±2 (1524) = +2(51) / -0  
 >40 (1024) ≤±20 (508) = +4 (102) / -0  
 >120 (3048) ≤±30 (762) = +6 (152) / -0  
 >300 (7620) = +5% / 0%  
 ALL OTHER DIMENSIONAL TOLERANCES:  
 X = ±2 (5.08)  
 XX = ±0.02 (5.1)  
 XXX = ±.005 (1.3)

APPROVALS	DATE
DRAWN BY D.FAIRBANK	11/15/2001
CHECKED BY T.CLARK	11/15/2001
APPROVED BY R.CARRICK	11/15/2001

CONFIGURATION DETAILS OF UNDIMENSIONED FEATURES MAY VARY  
 COLOR VARIATIONS MAY OCCUR



<b>L-com</b> Global Connectivity		45 BEECHWOOD DRIVE NORTH ANDOVER, MA 01845	
CATEGORY: D-SUBMINIATURE			
PRODUCT DESCRIPTION: ADPT, VGA GNDR CHGR HD15M/M			
SIZE: <b>B</b>	FSCM NO.: <b>43321</b>	DWG. NO.: <b>DGBV15M</b>	REV.: <b>A</b>
SCALE: 2:1		CAD FILE: DGBV15M.SLDRAW	
			SHEET 1 OF 1