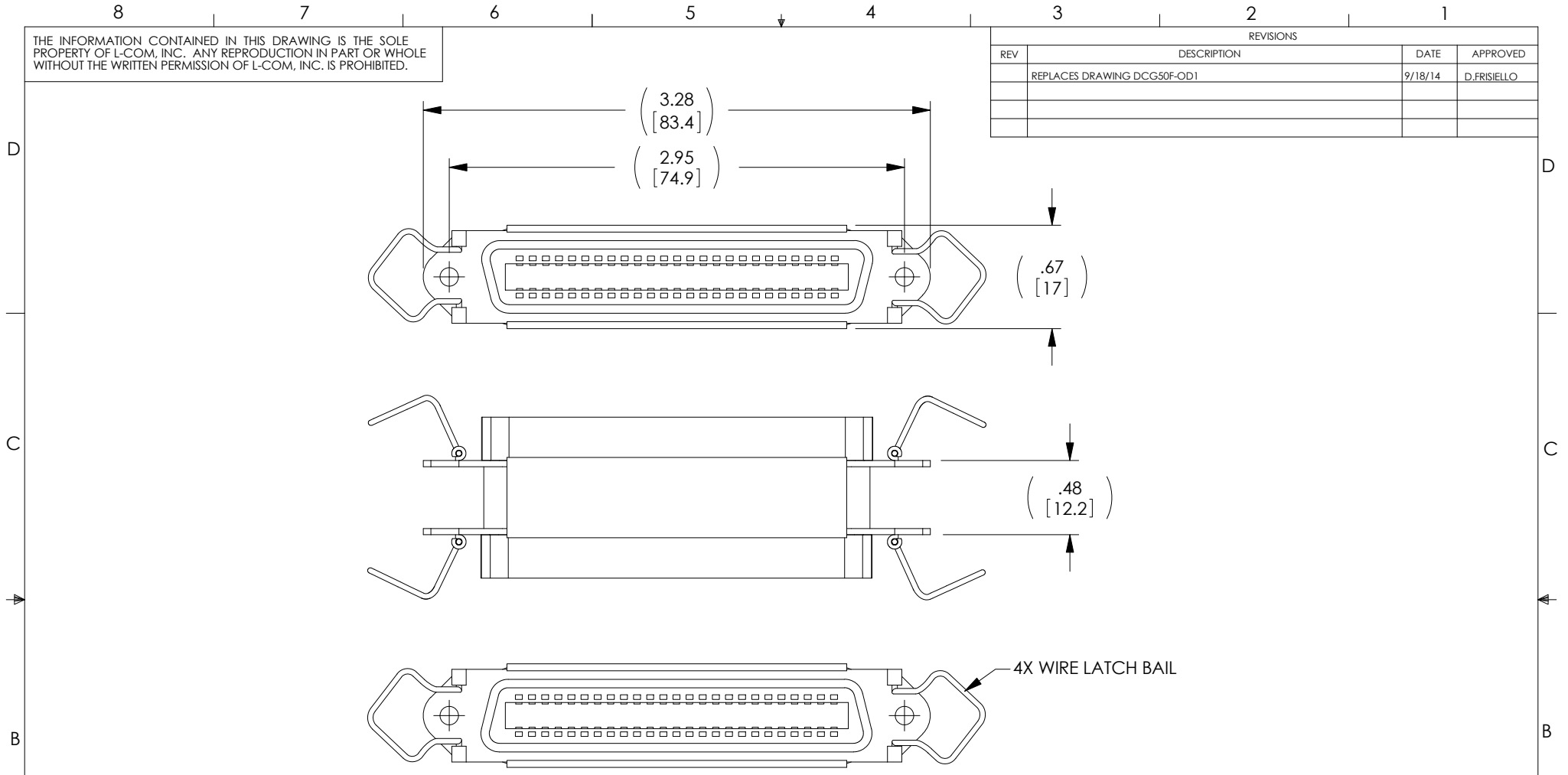


THE INFORMATION CONTAINED IN THIS DRAWING IS THE SOLE PROPERTY OF L-COM, INC. ANY REPRODUCTION IN PART OR WHOLE WITHOUT THE WRITTEN PERMISSION OF L-COM, INC. IS PROHIBITED.

REVISIONS			
REV	DESCRIPTION	DATE	APPROVED
	REPLACES DRAWING DCG50F-OD1	9/18/14	D.FRISIELLO



**NOTES:**

1. GENDER CHANGER HAS TWO FEMALE 50-CONTACT MICRO-RIBBON CONNECTORS WIRED STRAIGHT THROUGH.
2. STEEL HOUSING PROVIDES COMPLETE 360° SHIELDING.
3. INSULATOR MATERIAL: GLASS-FILLED PBT, BLUE.
4. CONTACT MATING SURFACES: GOLD-PLATED.
5. ADAPTER SHALL BE TESTED FOR CONTINUITY.
6. ADAPTER SHALL BE INDIVIDUALLY PACKAGED IN ACCORDANCE WITH L-COM SPECIFICATION PS-0031.

**REGULATORY COMPLIANCE:**  
CE2011/65/EU(RoHS DIRECTIVE)

UNLESS OTHERWISE SPECIFIED, DIMENSIONS ARE IN INCHES [mm] OVERALL CABLE LENGTH TOLERANCE: ≤12 [305] = +1 [25] / -0 >12 [305] ≤60 [1524] = +2 [51] / -0 >60 [1524] ≤120 [3048] = +4 [102] / -0 >120 [3048] ≤300 [7620] = +6 [152] / -0 >300 [7620] = +5% / -0%  ALL OTHER DIMENSIONAL TOLERANCES: .X = ±.2 [5.08] .XX = ±.02 [51] .XXX = ±.005 [1.13]	APPROVALS T CLARK CHECKED BY D PARHAM APPROVED BY C MCCORMICK	DATE 12/28/2001 12/31/2001 12/31/2001	45 BEECHWOOD DRIVE NORTH ANDOVER, MA 01845	
	CONFIGURATION DETAILS OF UNDIMENSIONED FEATURES MAY VARY			CATEGORY <b>HETEROGENEOUS</b>
	PROJECTION 	COLOR VARIATIONS MAY OCCUR	SIZE <b>A</b>	FSCM NO. <b>43321</b>
	DWG. NO. <b>DGC50F</b>		SCALE: NONE	CAD FILE: DGC50F.SLDDRW
			SHEET 1 OF 1	