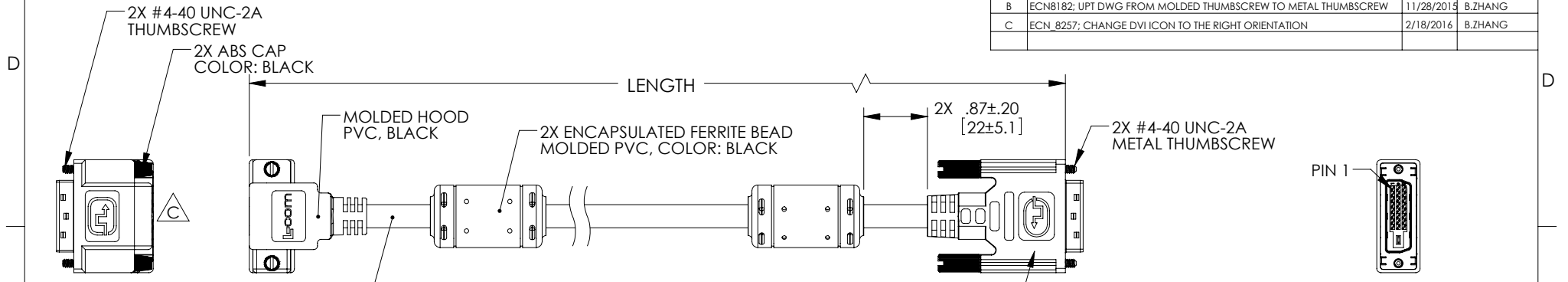


THE INFORMATION CONTAINED IN THIS DRAWING IS THE SOLE PROPERTY OF L-COM, INC. ANY REPRODUCTION IN PART OR WHOLE WITHOUT THE WRITTEN PERMISSION OF L-COM, INC. IS PROHIBITED.

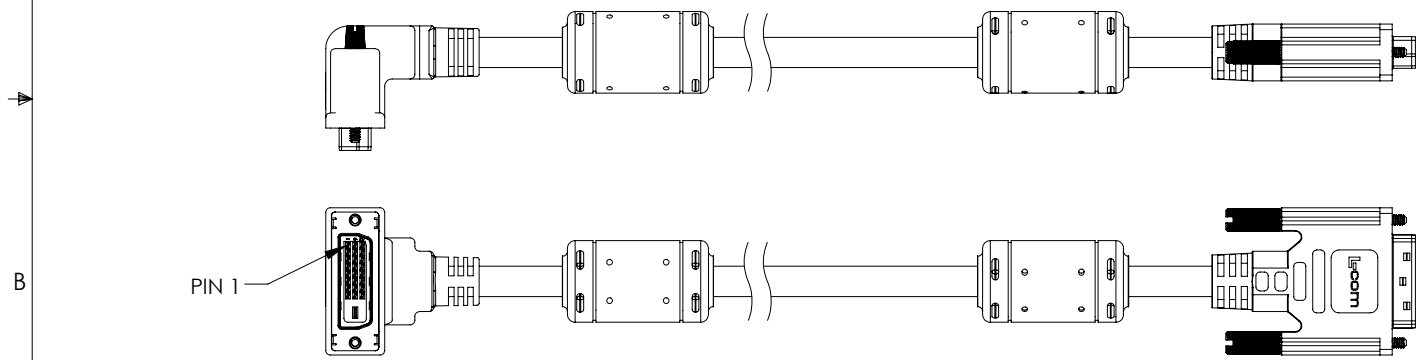
REVISIONS			
REV	DESCRIPTION	DATE	APPROVED
A	INITIAL RELEASE	11/17/11	D.GRIFFIN
B	ECN8182; UPT DWG FROM MOLDED THUMBSCREW TO METAL THUMBSCREW	11/28/2015	B.ZHANG
C	ECN_8257; CHANGE DVI ICON TO THE RIGHT ORIENTATION	2/18/2016	B.ZHANG



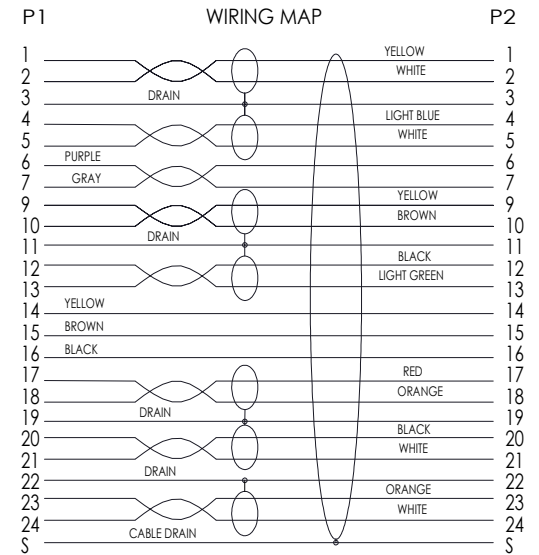
UL STYLE 20276,
 (7) SHIELDED TWISTED PAIR, 28AWG, STRANDED TINNED COPPER,
 (1) UNSHIELDED TWISTED PAIR, 28AWG, STRANDED TINNED COPPER,
 (3) CONDUCTORS, 28AWG, STRANDED TINNED COPPER,
 SHIELDING (BRAIDED): 36AWG TINNED COPPER
 SHIELDING: ALUMINUM/POLYESTER
 OUTER JACKET: PVC, BLACK

"P1"
 MALE DVI-D
 DUAL LINK PLUG
 RIGHT ANGLE
 CONNECTOR

"P2"
 MALE DVI-D
 DUAL LINK PLUG



PART NUMBER	LENGTH	
	METERS	[FEET]
DVIDD-RA-0.5M	0.5	[1.64]
DVIDD-RA-1M	1.0	[3.28]
DVIDD-RA-2M	2.0	[6.56]
DVIDD-RA-3M	3.0	[9.84]
DVIDD-RA-4M	4.0	[13.12]
DVIDD-RA-5M	5.0	[16.41]



PIN 8: NO CONNECTION

- NOTES:**
- CABLE ASSEMBLY TO BE TESTED FOR CONTINUITY
 - CABLE ASSEMBLY TO BE INDIVIDUALLY PACKAGED IN ACCORDANCE WITH L-COM SPEC. PS-0031.
 - DUST COVERS INSTALLED FOR SHIPPING (NOT SHOWN).

REGULATORY COMPLIANCE:
 CE2011/65/EU (RoHS DIRECTIVE)

UNLESS OTHERWISE SPECIFIED, DIMENSIONS ARE IN INCHES [mm] OVERALL CABLE LENGTH TOLERANCE: ≤ 12 [305] = +1 [25] / -0 > 12 [305] ≤ 60 [1524] = +2 [51] / -0 > 60 [1524] ≤ 120 [3048] = +4 [102] / -0 > 120 [3048] ≤ 300 [7620] = +6 [152] / -0 > 300 [7620] = +5% / -0%	APPROVALS DRAWN BY D. CASTRO CHECKED BY D. PARHAM APPROVED BY P. MCNEIL	DATE 11/17/11 11/17/11 11/17/11	45 BEECHWOOD DRIVE NORTH ANDOVER, MA 01845		
	ALL OTHER DIMENSIONAL TOLERANCES: .X = ± .2 [5.08] .XX = ± .02 [1.51] .XXX = ± .005 [1.3]	CONFIGURATION DETAILS OF UNDIMENSIONED FEATURES MAY VARY		PRODUCT DESCRIPTION CBL DVI-D DL RA	
PROJECTION 	COLOR VARIATIONS MAY OCCUR	SIZE A	FSCM NO. 43321	DWG. NO. DVIDD-RA-M	REV. C
REF	SCALE: NONE	CAD FILE: DVIDD-RA-M.SLDDRW	SHEET 1 OF 1		