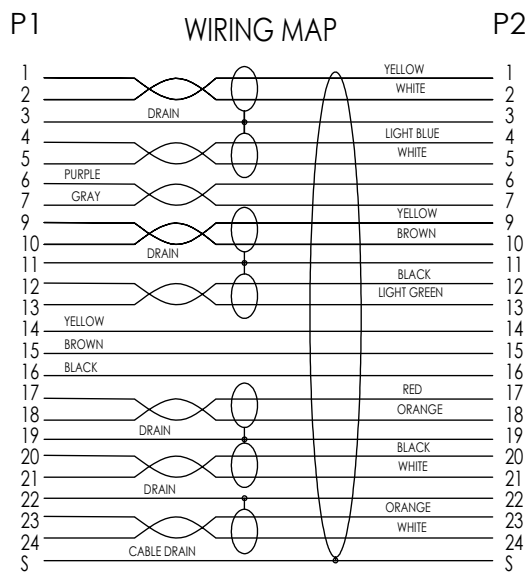
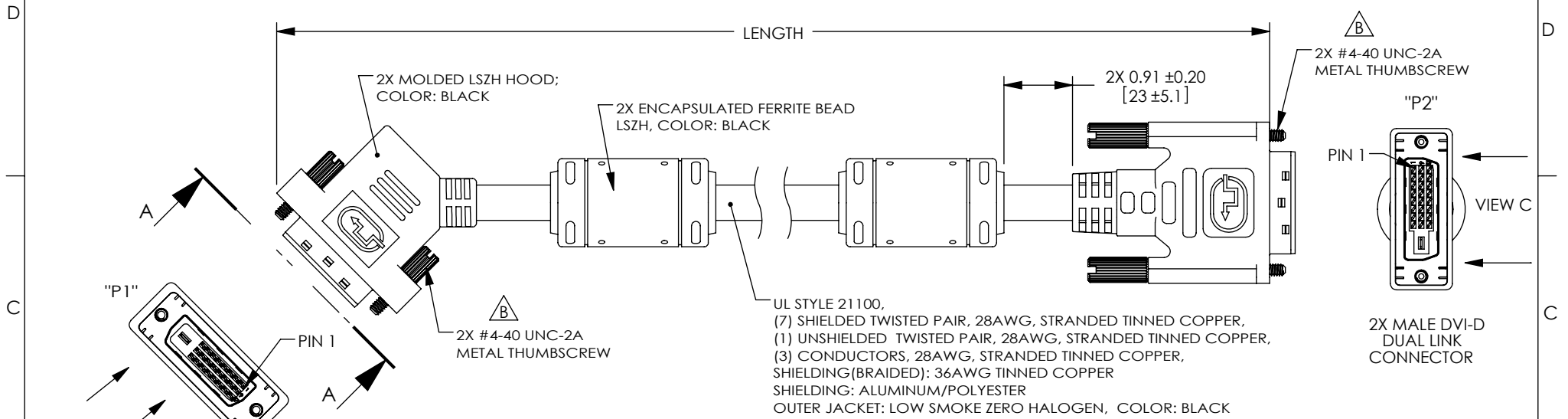


THE INFORMATION CONTAINED IN THIS DRAWING IS THE SOLE PROPERTY OF L-COM, INC. ANY REPRODUCTION IN PART OR WHOLE WITHOUT THE WRITTEN PERMISSION OF L-COM, INC. IS PROHIBITED.

REVISIONS			
REV	DESCRIPTION	DATE	APPROVED
A	INITIAL RELEASE	12/21/11	D.GRIFFIN
B	ECN8182; UPD DWG FROM MOLDED THUMBSCREW TO METAL THUMBSCREW	11/30/2013	B.ZHANG

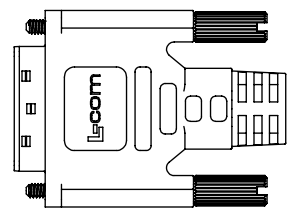
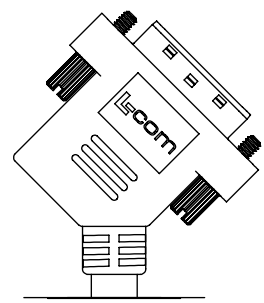


MODEL NUMBER	LENGTH	
	FEET	METERS
DVIDDLZ-45-1	1.0	.31
DVIDDLZ-45-3	3.0	.91
DVIDDLZ-45-5	5.0	1.52
DVIDDLZ-45-10	10.0	3.05
DVIDDLZ-45-15	15.0	4.57

- NOTES:**
1. CABLES TO BE TESTED FOR CONTINUITY.
 2. CABLES TO BE INDIVIDUALLY PACKAGED IN ACCORDANCE WITH L-COM SPECIFICATION PS-0031.
 3. DUST COVERS INSTALLED FOR SHIPPING (NOT SHOWN).

REGULATORY COMPLIANCE:
CE2011/65/EU(RoHS DIRECTIVE)

PIN 8: NO CONNECTION



UNLESS OTHERWISE SPECIFIED, DIMENSIONS ARE IN INCHES [mm] OVERALL CABLE LENGTH TOLERANCE: $\le 12 [305] = +1 [25] / 0$ $> 12 [305] \le 60 [1524] = +2 [51] / -0$ $> 60 [1524] \le 120 [3048] = +4 [102] / -0$ $> 120 [3048] \le 300 [7620] = +6 [152] / -0$ $> 300 [7620] = +5\% / -0\%$	APPROVALS	DATE		45 BEECHWOOD DRIVE NORTH ANDOVER, MA 01845
	DRAWN BY D.FRISIELLO	12/14/11		
ALL OTHER DIMENSIONAL TOLERANCES: $.X = \pm .2 [5.08]$ $.XX = \pm .02 [.51]$ $.XXX = \pm .005 [.13]$	CHECKED BY R.SCOTT	12/14/11	CATEGORY	
	APPROVED BY P.McNEIL	12/14/11	AUDIO/VIDEO	
PROJECTION	CONFIGURATION DETAILS OF UNDIMENSIONED FEATURES MAY VARY	PRODUCT DESCRIPTION		
	COLOR VARIATIONS MAY OCCUR	SIZE A	FSCM NO. 43321	DWG. NO. DVIDDLZ-45
REF	SCALE: NONE	CAD FILE: DVIDDLZ-45.SLDRW	SHEET 1 OF 1	