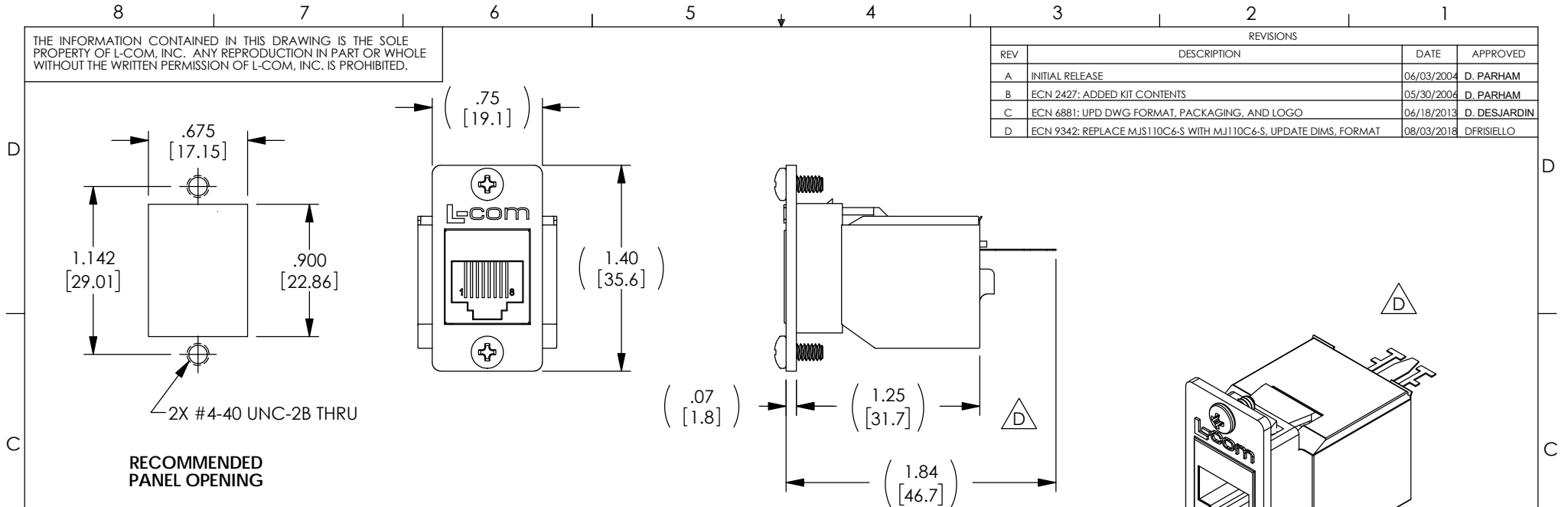


THE INFORMATION CONTAINED IN THIS DRAWING IS THE SOLE PROPERTY OF L-COM, INC. ANY REPRODUCTION IN PART OR WHOLE WITHOUT THE WRITTEN PERMISSION OF L-COM, INC. IS PROHIBITED.

REVISIONS			
REV	DESCRIPTION	DATE	APPROVED
A	INITIAL RELEASE	06/03/2004	D. PARHAM
B	ECN 2427: ADDED KIT CONTENTS	05/30/2004	D. PARHAM
C	ECN 6881: UPD DWG FORMAT, PACKAGING, AND LOGO	06/18/2013	D. DESJARDIN
D	ECN 9342: REPLACE MJS110C6-S WITH MJ110C6-S, UPDATE DIMS, FORMAT	08/03/2018	DFRISIELLO



**RECOMMENDED  
PANEL OPENING**

2X #4-40 UNC-2B THRU

CAT 6 SHIELDED RJ45 KEYSTONE JACK  
(L-COM P/N: MJ110C6-S)

CABLE STRAIN RELIEF

FLANGE MOUNT  
KEYSTONE ADAPTER

2X 4-40UNC-2A  
X 1/4" LONG

**KIT SHOWN FULLY ASSEMBLED FOR CLARITY  
(KIT IS SHIPPED UN-ASSEMBLED)**

**KIT INCLUDES:**  
1- KEYSTONE JACK  
1- FLANGE ADAPTOR  
1- PACKAGE MOUNTING SCREWS (4-40x 1/4")

**NOTES:**

**MATERIAL:**  
FLANGED ADAPTOR: ZINC ALLOY  
HARDWARE: STAINLESS STEEL.

**FINISH:**  
FLANGED ADAPTOR: NICKEL PLATE.

**PACKAGING:**  
KITS SHALL BE INDIVIDUALLY PACKAGED IN ACCORDANCE WITH L-COM PACKAGING SPECIFICATION PS-0031.

**REGULATORY COMPLIANCE:**  
CE2011/65/EU(RoHS DIRECTIVE)

UNLESS OTHERWISE SPECIFIED, DIMENSIONS ARE IN INCHES [mm] OVERALL CABLE LENGTH TOLERANCE: ≤12 [305] = +1 [25] / -0 >12 [305] ≤60 [1524] = +2 [51] / -0 >60 [1524] ≤120 [3048] = +4 [102] / -0 >120 [3048] ≤300 [7620] = +6 [152] / -0 >300 [7620] = +5% / -0% ALL OTHER DIMENSIONAL TOLERANCES: .X = ± .2 [5.08] .XX = ± .02 [1.51] .XXX = ±.005 [1.13]	APPROVALS DRAWN BY <b>D. PARHAM</b>	DATE 06/03/2004		50 HIGH STREET NORTH ANDOVER, MA 01845	
	CHECKED BY T. CLARK	06/03/2004		CATEGORY <b>TELECOM/MODULAR</b>	
	APPROVED BY C. MCCORMICK	06/03/2004	PRODUCT DESCRIPTION <b>JACK CAT6 RJ45/110 FLNG SHLD</b>	SIZE <b>A</b>	FSCM NO. <b>43321</b>
	PROJECTION 	CONFIGURATION DETAILS OF UNDIMENSIONED FEATURES MAY VARY	COLOR VARIATIONS MAY OCCUR	DWG. NO. <b>ECF110C6-S</b>	REV. <b>D</b>
			SCALE: NONE	CAD FILE: ECF110C6-S.SLDDRW	
			SHEET 1 OF 1		