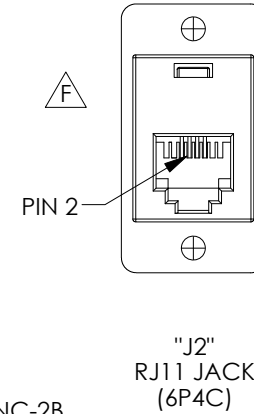
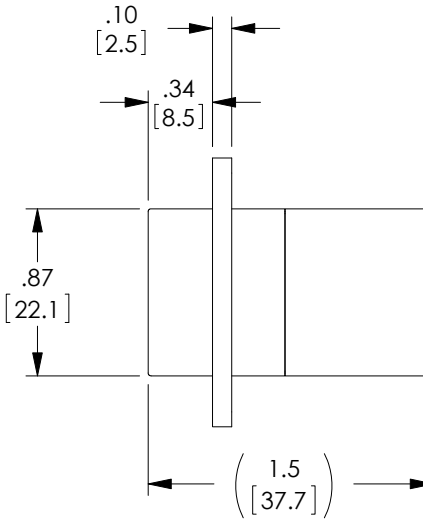
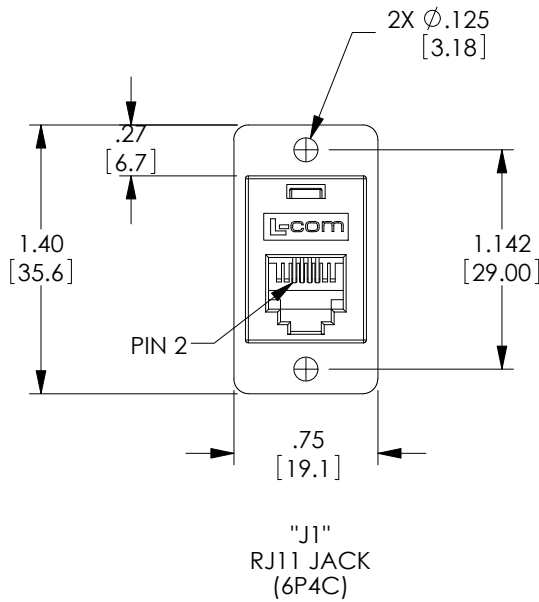
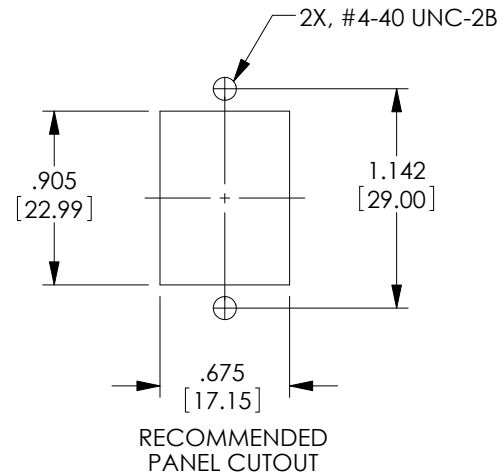


THE INFORMATION CONTAINED IN THIS DRAWING IS THE SOLE PROPERTY OF L-COM, INC. ANY REPRODUCTION IN PART OR WHOLE WITHOUT THE WRITTEN PERMISSION OF L-COM, INC. IS PROHIBITED.

| REVISIONS | | | |
|-----------|---|---------|-------------|
| REV | DESCRIPTION | DATE | APPROVED |
| E | ECN 6554: REVISED DIM TO [1.5], ROHS, FORMAT, REMOVE FINISH, MATL PC TO ABS | 2/12/14 | D.FRISIELLO |
| F | ECN 8260: REMOVED L-COM LOGO FROM REAR HOUSING | 2/18/16 | D.FRISIELLO |
| | | | |



| WIRING MAP | |
|------------|------|
| "J1" | "J2" |
| 2 | 5 |
| 3 | 4 |
| 4 | 3 |
| 5 | 2 |



NOTES:

MATERIAL:

HOUSING: ABS, UL94V-0, COLOR: IVORY
 CONTACTS: PHOSPHOR BRONZE
 CONTACT PLATING: GOLD, 30 μ INCHES OVER NICKEL PLATING.

ELECTRICAL:

CURRENT RATING: 2 AMPS (MAX.)
 VOLTAGE RATING: 140 VDC

MISCELLANEOUS:

ALL DIMENSIONS SHOWN ARE FOR REFERENCE ONLY.
 OPERATING TEMPERATURE RANGE: -20 °C TO +80 °C.
 RATING APPLICATION: CATEGORY 3

COMPONENT SHALL BE INDIVIDUALLY PACKAGED IN ACCORDANCE WITH L-COM SPECIFICATION PS-0031.

REGULATORY COMPLIANCE:

CE2011/65/EU (RoHS DIRECTIVE)

| | | | | |
|---|--|---------|--|--|
| UNLESS OTHERWISE SPECIFIED, DIMENSIONS ARE IN INCHES [mm] OVERALL CABLE LENGTH TOLERANCE: ≤12 [305] = +1 [25] / -0 >12 [305] ≤60 [1524] = +2 [51] / -0 >60 [1524] ≤120 [3048] = +4 [102] / -0 >120 [3048] ≤300 [7620] = +6 [152] / -0 >300 [7620] = +5% / -0% | APPROVALS | DATE | | 45 BEECHWOOD DRIVE NORTH ANDOVER, MA 01845 |
| | DRAWN BY D.FRISIELLO | 4/23/12 | | |
| ALL OTHER DIMENSIONAL TOLERANCES: .X = ±.2 [5.08] .XX = ±.02 [51] .XXX = ±.005 [1.27] | CHECKED BY D.DESJARDIN | 4/23/12 | CATEGORY TELECOM/MODULAR | |
| | APPROVED BY D.GALLAGHER | 4/23/12 | PRODUCT DESCRIPTION CPLR PNL MNT 6X4 CROSSED IVRY | |
| PROJECTION | CONFIGURATION DETAILS OF UNDIMENSIONED FEATURES MAY VARY | | SIZE A | FSCM NO. 43321 |
| | COLOR VARIATIONS MAY OCCUR | | DWG. NO. ECF504-4C | REV. F |
| | | | SCALE: NONE | CAD FILE: ECF504-4C.SLDRW |
| | | | SHEET 1 OF 1 | |