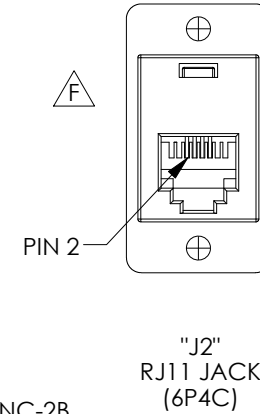
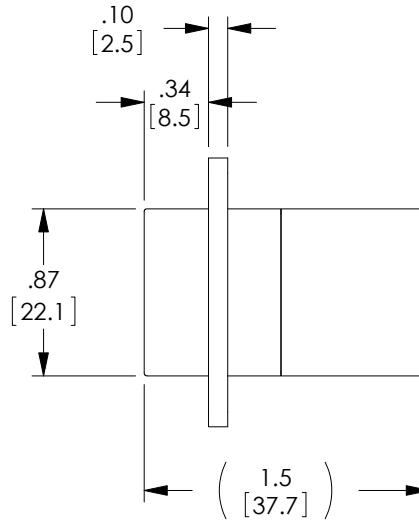
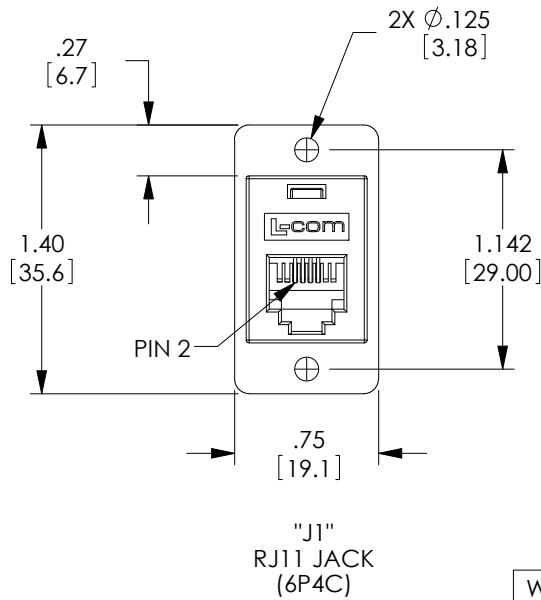
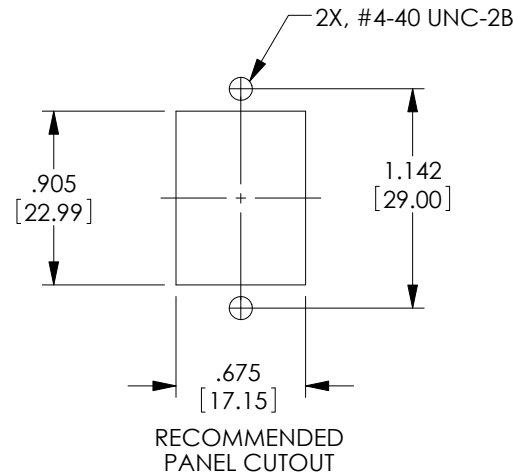


THE INFORMATION CONTAINED IN THIS DRAWING IS THE SOLE PROPERTY OF L-COM, INC. ANY REPRODUCTION IN PART OR WHOLE WITHOUT THE WRITTEN PERMISSION OF L-COM, INC. IS PROHIBITED.

REVISIONS			
REV	DESCRIPTION	DATE	APPROVED
E	ECN 6554: REVISED DIM TO [1.5], ROHS, FORMAT, REMOVE FINISH, MAT L'PC TO ABS	2/12/14	D.FRISIELLO
F	ECN 8260: REMOVED L-COM LOGO FROM REAR HOUSING	2/18/16	D.FRISIELLO



WIRING MAP	
"J1"	"J2"
2	2
3	3
4	4
5	5



NOTES:

MATERIAL:

HOUSING: ABS, UL94V-0, COLOR: IVORY
 CONTACTS: PHOSPHOR BRONZE
 CONTACT PLATING: GOLD, 30 μ INCHES OVER NICKEL PLATING.

ELECTRICAL:

CURRENT RATING: 2 AMPS (MAX.)
 VOLTAGE RATING: 140 VDC

MISCELLANEOUS:

ALL DIMENSIONS SHOWN ARE FOR REFERENCE ONLY.
 OPERATING TEMPERATURE RANGE: -20 °C TO +80 °C.
 RATING APPLICATION: CATEGORY 3

COMPONENT SHALL BE INDIVIDUALLY PACKAGED IN ACCORDANCE WITH L-COM SPECIFICATION PS-0031.

REGULATORY COMPLIANCE:

CE2011/65/EU(RoHS DIRECTIVE)

UNLESS OTHERWISE SPECIFIED, DIMENSIONS ARE IN INCHES [mm] OVERALL CABLE LENGTH TOLERANCE: ≤12 [305] = +1 [25] / -0 >12 [305] ≤60 [1524] = +2 [51] / -0 >60 [1524] ≤120 [3048] = +4 [102] / -0 >120 [3048] ≤300 [7620] = +6 [152] / -0 >300 [7620] = +5% / -0% ALL OTHER DIMENSIONAL TOLERANCES: .X = ± .2 [5.08] .XX = ± .02 [5.1] .XXX = ±.005 [1.3]	APPROVALS	DATE	45 BEECHWOOD DRIVE NORTH ANDOVER, MA 01845
	DRAWN BY D.FRISIELLO CHECKED BY D.DESJARDIN APPROVED BY D.GALLAGHER	4/23/12 4/23/12 4/23/12	
PROJECTION	CONFIGURATION DETAILS OF UNDIMENSIONED FEATURES MAY VARY	PRODUCT DESCRIPTION	
	COLOR VARIATIONS MAY OCCUR	CPLR PNL MNT 6X4 STRAIGHT IVRY	
SIZE A	FSCM NO. 43321	DWG. NO. ECF504-4S	REV. F
SCALE: NONE		CAD FILE: ECF504-4S.SLDDRW	
			SHEET 1 OF 1