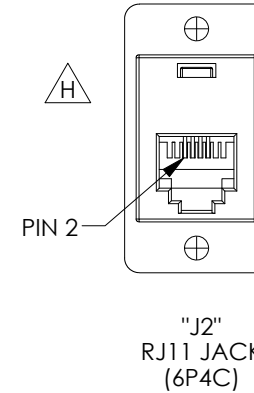
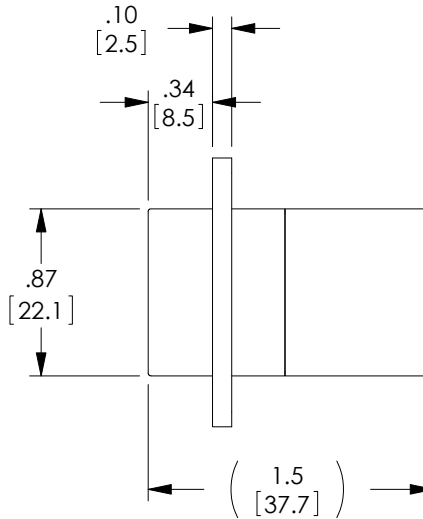
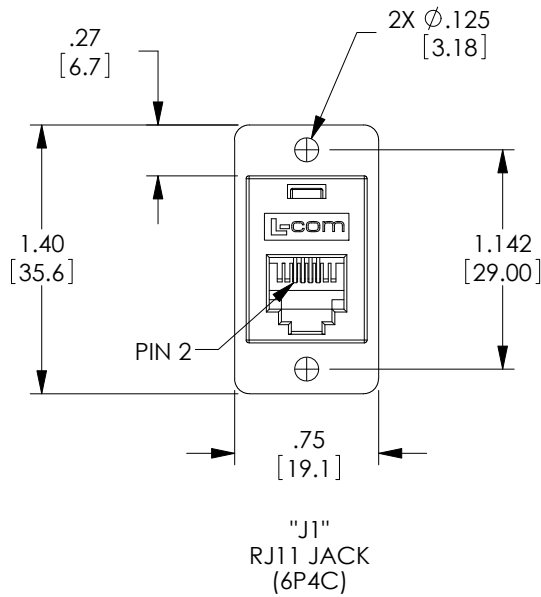
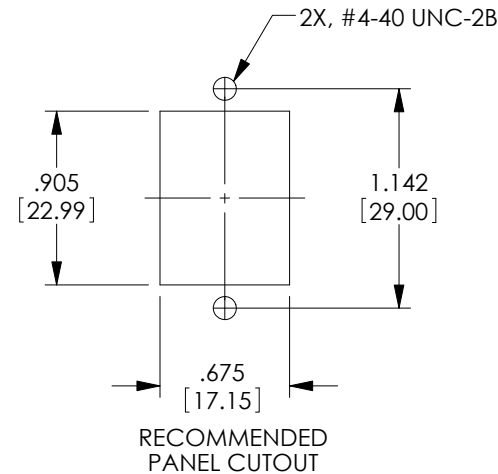


THE INFORMATION CONTAINED IN THIS DRAWING IS THE SOLE PROPERTY OF L-COM, INC. ANY REPRODUCTION IN PART OR WHOLE WITHOUT THE WRITTEN PERMISSION OF L-COM, INC. IS PROHIBITED.

REVISIONS			
REV	DESCRIPTION	DATE	APPROVED
E	ECN 5720: REVISED GOLD PLATE TO 30u, ALL NOTES, NEW FORMAT	9/20/11	D.FRISIELLO
F	ECN 6114: CN RELEASE	5/31/12	D.FRISIELLO
G	ECN 6554: REVISED DIM TO (1.5), ROHS, FORMAT, REMOVE FINISH, MATL PC TO ABS	2/12/14	D.FRISIELLO
H	ECN 8260: REMOVED L-COM LOGO FROM REAR HOUSING	2/18/16	D.FRISIELLO



"J1"	"J2"
2	2
3	3
4	4
5	5



**NOTES:**

**MATERIAL:**

HOUSING: ABS, UL94V-0, COLOR: BLACK  
 CONTACTS: PHOSPHOR BRONZE  
 CONTACT PLATING: GOLD, 30 μ INCHES OVER NICKEL PLATING.

**ELECTRICAL:**

CURRENT RATING: 2 AMPS (MAX.)  
 VOLTAGE RATING: 140 VDC

**MISCELLANEOUS:**

ALL DIMENSIONS SHOWN ARE FOR REFERENCE ONLY.  
 OPERATING TEMPERATURE RANGE: -20 °C TO +80 °C.  
 RATING APPLICATION: CATEGORY 3

COMPONENT SHALL BE INDIVIDUALLY PACKAGED IN ACCORDANCE WITH L-COM SPECIFICATION PS-0031.

**REGULATORY COMPLIANCE:**

CE2011/65/EU (RoHS DIRECTIVE)

UNLESS OTHERWISE SPECIFIED, DIMENSIONS ARE IN INCHES [mm] OVERALL CABLE LENGTH TOLERANCE: ≤12 [305] = +1 [25] / -0 >12 [305] ≤60 [1524] = +2 [51] / -0 >60 [1524] ≤120 [3048] = +4 [102] / -0 >120 [3048] ≤300 [7620] = +6 [152] / -0 >300 [7620] = +5% / -0%	APPROVALS	DATE		45 BEECHWOOD DRIVE NORTH ANDOVER, MA 01845
	DRAWN BY D.FRISIELLO	4/23/12		CATEGORY TELECOM/MODULAR
ALL OTHER DIMENSIONAL TOLERANCES: .X = ± .2 [5.08] .XX = ± .02 [1.51] .XXX = ±.005 [1.13]	CHECKED BY D.DESJARDIN	4/23/12	PRODUCT DESCRIPTION CPLR PNL MNT 6X4 STRAIGHT BLK	
PROJECTION 	APPROVED BY D.GALLAGHER	4/23/12	CONFIGURATION DETAILS OF UNDIMENSIONED FEATURES MAY VARY	SCALE: NONE
	COLOR VARIATIONS MAY OCCUR		SIZE <b>A</b>	FSCM NO. <b>43321</b>
			DWG. NO. ECF504B-4S	REV. <b>H</b>
			CAD FILE: ECF504B-4S.SLDDRW	
			SHEET 1 OF 1	