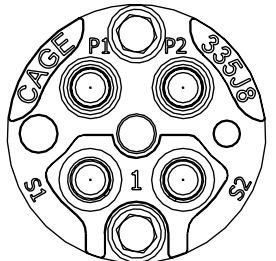
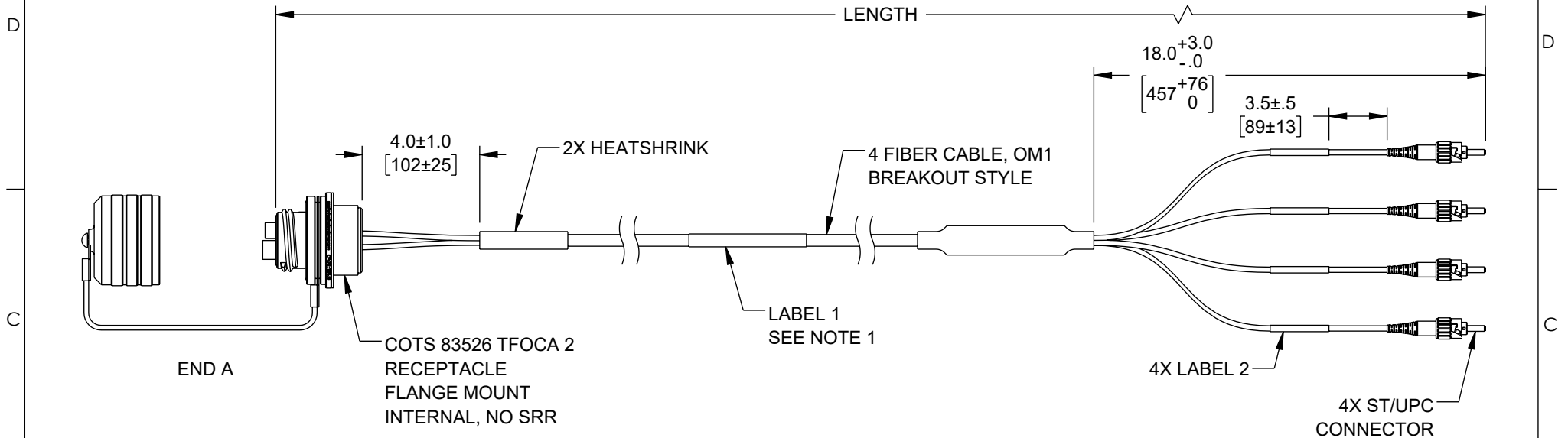
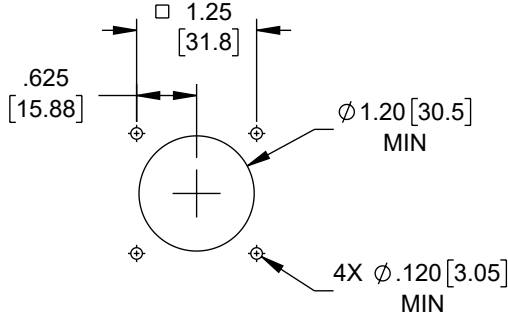


THE INFORMATION CONTAINED IN THIS DRAWING IS THE SOLE PROPERTY OF L-COM, INC. ANY REPRODUCTION IN PART OR WHOLE WITHOUT THE WRITTEN PERMISSION OF L-COM, INC. IS PROHIBITED.

| REVISION |     |             |            |            |            |
|----------|-----|-------------|------------|------------|------------|
| ZONE     | REV | DESCRIPTION | DATE       | CHANGED BY | APPROVED   |
| D2:D7    | B   | ECO-12986   | 08/16/2023 | SREITER    | REVANGELIS |



INSERT CAP  
FACE VIEW



RECOMMENDED  
MTG HOLE PATTERN

**LABEL 1**

FCA-M8-FMSTM1MT-XX  
MRF: 335J8  
SN: XXXXXXXXXXXXXXXXXXXX

**LABEL 2**

XX-ST

SEE TABLE 1

**TABLE 1: PINOUT DIAGRAM**

| END A | FIBER  | END B |
|-------|--------|-------|
| S1    | BLUE   | S1-ST |
| S2    | GREEN  | S2-ST |
| P1    | ORANGE | P1-ST |
| P2    | BROWN  | P2-ST |

**TABLE 2: CABLE LENGTH**

| PART NO.          | FEET | METERS |
|-------------------|------|--------|
| FCA-M8-FMSTM1MT-1 | 3.3  | 1      |
| FCA-M8-FMSTM1MT-3 | 9.8  | 3      |

**NOTES:**

- IDENTIFICATION LABEL PLACEMENT IS APPROX CENTERED.
- CABLE ASSEMBLY DELIVERED HAND COILED.
- FABRICATED, INSPECTED AND TESTED IN ACCORDANCE WITH IPC-A-640 CLASS 3.

**CABLE LENGTH TOLERANCE:**

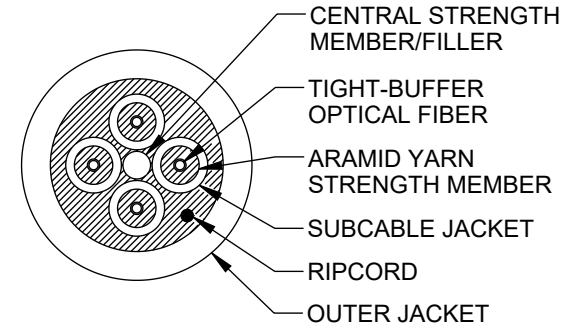
- LESS THAN (OR EQUAL TO) 20FT: +6"
- GREATER THAN 20FT - 100FT: +12"
- GREATER THAN 100FT: +36"

|  |   |  |
|--|---|--|
| UNLESS OTHERWISE SPECIFIED,<br>DIMENSIONS ARE IN INCHES [mm]<br><br>OVERALL CABLE LENGTH TOLERANCE:<br>≤12 [305] = +1 [25] / -0<br>>12 [305] ≤60 [1524] = +2 [51] / -0<br>>60 [1524] ≤120 [3048] = +4 [102] / -0<br>>120 [3048] ≤300 [7620] = +6 [152] / -0<br>>300 [7620] = +5% / -0<br><br>ALL OTHER DIMENSIONAL TOLERANCES:<br>.X = ±.2 [5]   FRACTIONS ± 1/32<br>.XX = ±.02 [.5]   ANGLES ± 1°<br>.XXX = ±.005 [.13] | APPROVALS<br>SREITER<br>DATE<br>06/05/2023  | 50 High Street, West Mill,<br>North Andover, MA 01845 USA.<br>Phone: 1.800.341.5266<br>1.978.682.6936                          |
|  | DRAWN BY<br>SREITER<br>CHECKED BY<br>REVANGELIS<br>APPROVED BY<br>PHOSPODAR<br>DATE<br>06/05/2023 |  |
| THIRD-ANGLE PROJECTION<br>   | CONFIGURATION DETAILS OF<br>UNDIMENSIONED FEATURES<br>MAY VARY                                    | PRODUCT DESCRIPTION<br>COTS M83526 (TFOCA II EQUIVALENT) 83526/18 4 CHANNEL<br>FLANGE RECEPTACLE TO ST 4X OM1 62.5/125/2mm, 1m |
| COLOR VARIATIONS<br>MAY OCCUR  | SIZE<br>A   | CAGE CODE<br>43321   |
|  | ITEM NO.<br>FCA-M8-FMSTM1MT-1   | REV.<br>B  |
|  | SCALE: NONE   | CAD FILE: FCA-M8-FMSTM1MT-1.SLDDRW   |
|  |   | SHEET 1 OF 2   |

THE INFORMATION CONTAINED IN THIS DRAWING IS THE SOLE PROPERTY OF L-COM, INC. ANY REPRODUCTION IN PART OR WHOLE WITHOUT THE WRITTEN PERMISSION OF L-COM, INC. IS PROHIBITED.

| REVISION |     |             |            |            |            |
|----------|-----|-------------|------------|------------|------------|
| ZONE     | REV | DESCRIPTION | DATE       | CHANGED BY | APPROVED   |
|          | B   | ECO-12986   | 08/16/2023 | SREITER    | REVANGELIS |

4 CHANNEL  
B-SERIES BREAKOUT – MIL-TAC CABLES


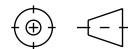


| FIBER PERFORMANCE              |                   |
|--------------------------------|-------------------|
| INDUSTRY STANDARD DESIGNATION  | OM1 ISO/IEC 11801 |
| CORE/CLADDING DIAMETER (µm)    | 62.5/125          |
| WAVELENGTH (nm)                | 850/1310          |
| SECONDARY BUFFER DIAMETER (µm) | 900               |

| MECHANICAL AND ENVIRONMENTAL |                |
|------------------------------|----------------|
| IMPACT RESISTANCE TIA-455-25 | 1500 IMPACTS   |
| CRUSH RESISTANCE TIA-455-41  | 2200 N/cm      |
| OPERATING TEMPERATURE        | -55°C TO +85°C |
| STORAGE TEMPERATURE          | -70°C TO +85°C |

| INSTALLATION AND OPERATING CHARACTERISTICS |                   |                 |
|--|-------------------|-----------------|
|  | INSTALLATION      | OPERATING       |
| MAX TENSILE LOAD                           | 2,200 N (490 lbs) | 550 N (120 lbs) |
| MIN BEND RADIUS                            | 7.5 cm (3.0 in)   | 3.8 cm (1.5 in) |

| CABLE CHARACTERISTICS |                  |
|-----------------------|------------------|
| JACKET COLOR          | BLACK            |
| JACKET MATERIAL       | POLYURETHANE     |
| BUFFER MATERIAL       | HARD ELASTOMERIC |
| SUBUNIT OD            | 2.0 mm           |
| CABLE DIAMETER        | 7.5 mm (0.30 in) |

|   |  |                               |   |
|---|--|-------------------------------|---|
| UNLESS OTHERWISE SPECIFIED,<br>DIMENSIONS ARE IN INCHES [mm]<br><br>OVERALL CABLE LENGTH TOLERANCE:<br>≤12 [305] = +1 [25] / -0<br>>12 [305] ≤60 [1524] = +2 [51] / -0<br>>60 [1524] ≤120 [3048] = +4 [102] / -0<br>>120 [3048] ≤300 [7620] = +6 [152] / -0<br>>300 [7620] = +5% / -0<br><br>ALL OTHER DIMENSIONAL TOLERANCES:<br>.X = ± .2 [5]   FRACTIONS ± 1/32<br>.XX = ± .02 [.5]   ANGLES ± 1°<br>.XXX = ± .005 [.13] | APPROVALS  | DATE                          |  50 High Street, West Mill,<br>North Andover, MA 01845 USA.<br>Phone: 1.800.341.5266<br>1.978.682.6936 |
|   | DRAWN BY<br>SREITER  | 06/05/2023                    |   |
|   | CHECKED BY<br>REVANGELIS                                       | 06/05/2023                    | PRODUCT DESCRIPTION<br>COTS M83526 (TFOCA II EQUIVALENT) 83526/18 4 CHANNEL<br>FLANGE RECEPTICAL TO ST 4X OM1 62.5/125/2mm, 1m  |
|   | APPROVED BY<br>PHOSPODAR                                       | 06/05/2023                    |   |
| THIRD-ANGLE PROJECTION<br>   | CONFIGURATION DETAILS OF<br>UNDIMENSIONED FEATURES<br>MAY VARY | COLOR VARIATIONS<br>MAY OCCUR | SIZE<br><b>A</b>  |
|   |  |                               | CAGE CODE<br><b>43321</b>   |
|   |  |                               | ITEM NO.<br><b>FCA-M8-FMSTM1MT-1</b>  |
|   |  |                               | REV.<br><b>B</b>  |
|   |  |                               | SCALE: NONE   CAD FILE: FCA-M8-FMSTM1MT-1.SLDDRW   SHEET 2 OF 2   |