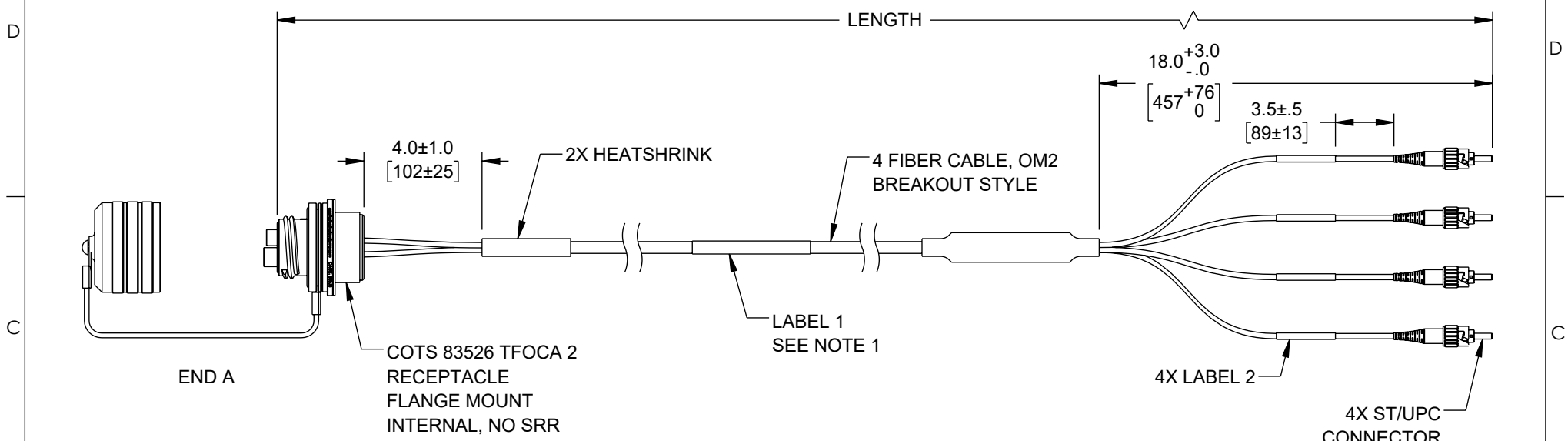


THE INFORMATION CONTAINED IN THIS DRAWING IS THE SOLE PROPERTY OF L-COM, INC. ANY REPRODUCTION IN PART OR WHOLE WITHOUT THE WRITTEN PERMISSION OF L-COM, INC. IS PROHIBITED.

REVISION					
ZONE	REV	DESCRIPTION	DATE	CHANGED BY	APPROVED
D2:D7	B	ECO-12986	08/16/2023	SREITER	REVANGELIS



END A

COTS 83526 TFOCA 2  
RECEPTACLE  
FLANGE MOUNT  
INTERNAL, NO SRR

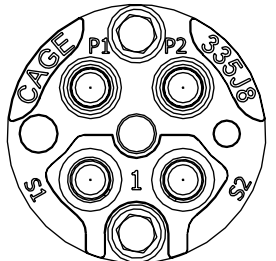
LENGTH

LABEL 1  
SEE NOTE 1

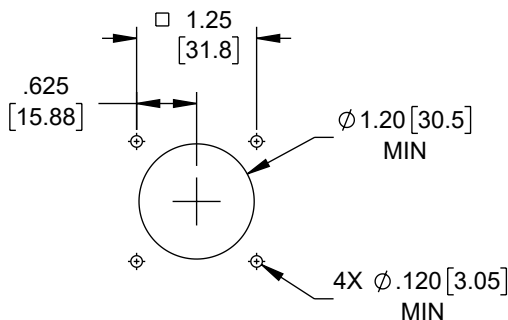
4X LABEL 2

4X ST/UPC  
CONNECTOR

END B



INSERT CAP  
FACE VIEW



RECOMMENDED  
MTG HOLE PATTERN

LABEL 1  
FCA-M8-FMSTM2MT-XX  
MRF: 335J8  
SN: XXXXXXXXXXXXXXXXXXXX

END A	FIBER	END B
S1	BLUE	S1-ST
S2	GREEN	S2-ST
P1	ORANGE	P1-ST
P2	BROWN	P2-ST

LABEL 2  
XX-ST

PART NO.	FEET	METERS
FCA-M8-FMSTM2MT-1	3.3	1
FCA-M8-FMSTM2MT-3	9.8	3

SEE TABLE 1

NOTES:

- IDENTIFICATION LABEL PLACEMENT IS APPROX CENTERED.
- CABLE ASSEMBLY DELIVERED HAND COILED.
- FABRICATED, INSPECTED AND TESTED IN ACCORDANCE WITH IPC-A-640 CLASS 3.

CABLE LENGTH TOLERANCE:

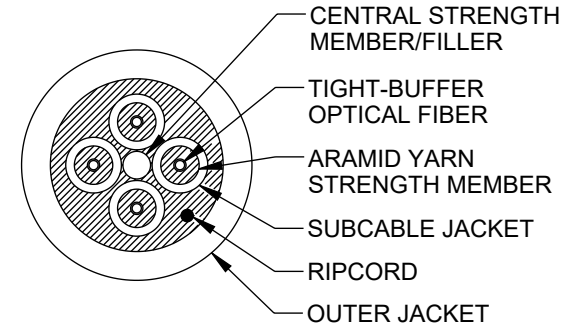
- LESS THAN (OR EQUAL TO) 20FT: +6"
- GREATER THAN 20FT - 100FT: +12"
- GREATER THAN 100FT: +36"

UNLESS OTHERWISE SPECIFIED, DIMENSIONS ARE IN INCHES [mm]  OVERALL CABLE LENGTH TOLERANCE: ≤12 [305] = +1 [25] / -0 >12 [305] ≤60 [1524] = +2 [51] / -0 >60 [1524] ≤120 [3048] = +4 [102] / -0 >120 [3048] ≤300 [7620] = +6 [152] / -0 >300 [7620] = +5% / -0  ALL OTHER DIMENSIONAL TOLERANCES: .X = ±.2 [5]   FRACTIONS ± 1/32 .XX = ±.02 [.5]   ANGLES ± 1° .XXX = ±.005 [.13]	APPROVALS SREITER CHECKED BY REVANGELIS APPROVED BY PHOSPODAR	DATE 06/05/2023 06/05/2023 06/05/2023	 an INFINITI® brand 50 High Street, West Mill, North Andover, MA 01845 USA. Phone: 1.800.341.5266 1.978.682.6936	
	CONFIGURATION DETAILS OF UNDIMENSIONED FEATURES MAY VARY  COLOR VARIATIONS MAY OCCUR	CATEGORY <b>CABLE ASSEMBLY</b>  PRODUCT DESCRIPTION COTS M83526 (TFOCA II EQUIVALENT) 83526/18 4 CHANNEL FLANGE RECEPTICAL TO ST 4X OM2 50/125/2mm, 1m		
THIRD-ANGLE PROJECTION 	SIZE <b>A</b>	CAGE CODE <b>43321</b>	ITEM NO. <b>FCA-M8-FMSTM2MT-1</b>	REV. <b>B</b>
SCALE: NONE		CAD FILE: FCA-M8-FMSTM2MT-1.SLDDRW		SHEET 1 OF 2

THE INFORMATION CONTAINED IN THIS DRAWING IS THE SOLE PROPERTY OF L-COM, INC. ANY REPRODUCTION IN PART OR WHOLE WITHOUT THE WRITTEN PERMISSION OF L-COM, INC. IS PROHIBITED.

REVISION					
ZONE	REV	DESCRIPTION	DATE	CHANGED BY	APPROVED
	B	ECO-12986	08/16/2023	SREITER	REVANGELIS

4 CHANNEL  
B-SERIES BREAKOUT – MIL-TAC CABLES


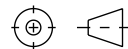


FIBER PERFORMANCE	
INDUSTRY STANDARD DESIGNATION	OM2 ISO/IEC 11801
CORE/CLADDING DIAMETER (µm)	50/125
WAVELENGTH (nm)	850/1310
SECONDARY BUFFER DIAMETER (µm)	900

MECHANICAL AND ENVIRONMENTAL	
IMPACT RESISTANCE TIA-455-25	1500 IMPACTS
CRUSH RESISTANCE TIA-455-41	2200 N/cm
OPERATING TEMPERATURE	-55°C TO +85°C
STORAGE TEMPERATURE	-70°C TO +85°C

INSTALLATION AND OPERATING CHARACTERISTICS		
	INSTALLATION	OPERATING
MAX TENSILE LOAD	2,200 N (490 lbs)	550 N (120 lbs)
MIN BEND RADIUS	7.5 cm (3.0 in)	3.8 cm (1.5 in)

CABLE CHARACTERISTICS	
JACKET COLOR	BLACK
JACKET MATERIAL	POLYURETHANE
BUFFER MATERIAL	HARD ELASTOMERIC
SUBUNIT OD	2.0 mm
CABLE DIAMETER	7.5 mm (0.30 in)

UNLESS OTHERWISE SPECIFIED, DIMENSIONS ARE IN INCHES [mm]  OVERALL CABLE LENGTH TOLERANCE: ≤12 [305] = +1 [25] / -0 >12 [305] ≤60 [1524] = +2 [51] / -0 >60 [1524] ≤120 [3048] = +4 [102] / -0 >120 [3048] ≤300 [7620] = +6 [152] / -0 >300 [7620] = +5% / -0  ALL OTHER DIMENSIONAL TOLERANCES: .X = ± .2 [5]   FRACTIONS ± 1/32 .XX = ± .02 [.5]   ANGLES ± 1° .XXX = ± .005 [.13]	APPROVALS	DATE	 50 High Street, West Mill, North Andover, MA 01845 USA. Phone: 1.800.341.5266 1.978.682.6936		
	DRAWN BY SREITER	06/05/2023			
THIRD-ANGLE PROJECTION 	CHECKED BY REVANGELIS	06/05/2023	CATEGORY  <b>CABLE ASSEMBLY</b>		
	APPROVED BY PHOSPODAR	06/05/2023			
CONFIGURATION DETAILS OF UNDIMENSIONED FEATURES MAY VARY  COLOR VARIATIONS MAY OCCUR	PRODUCT DESCRIPTION COTS M83526 (TFOCA II EQUIVALENT) 83526/18 4 CHANNEL FLANGE RECEPTICAL TO ST 4X OM2 50/125/2mm, 1m	SIZE <b>A</b>	CAGE CODE <b>43321</b>	ITEM NO. <b>FCA-M8-FMSTM2MT-1</b>	REV. <b>B</b>
SCALE: NONE		CAD FILE: FCA-M8-FMSTM2MT-1.SLDDRW		SHEET 2 OF 2	