

6

5

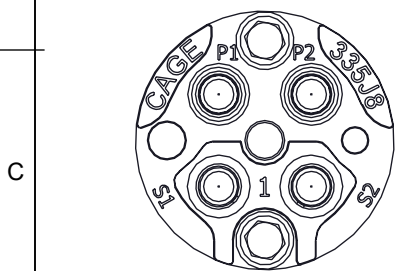
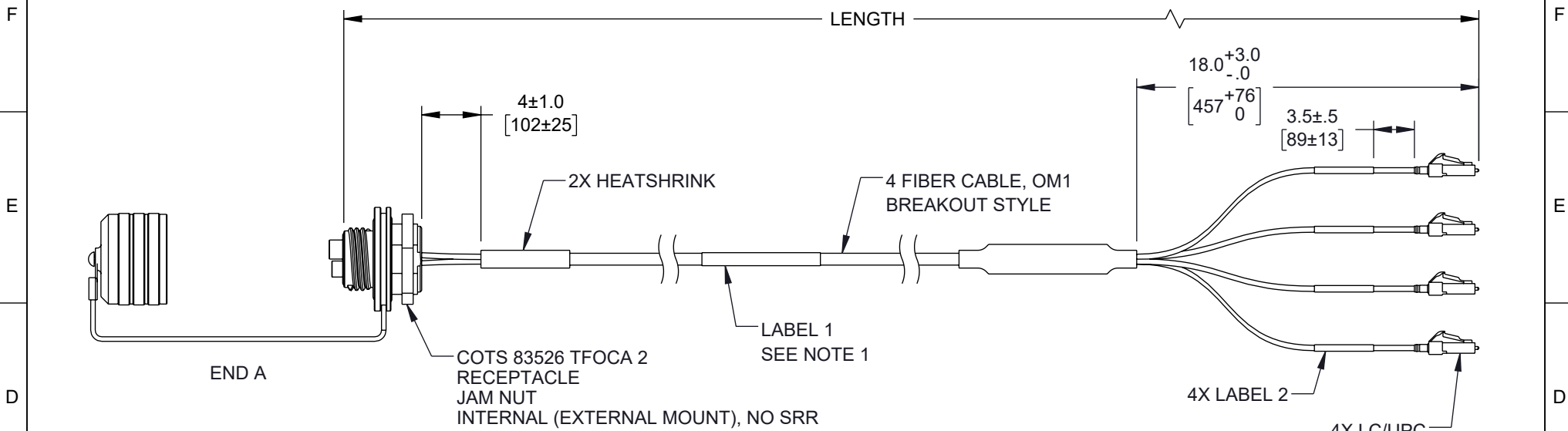
4

3

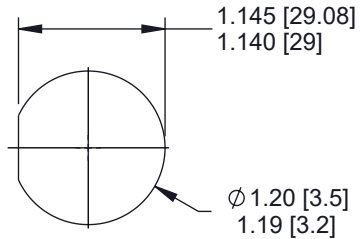
2

1

| REVISION | | | | | |
|----------|-----|-------------|------------|------------|----------|
| ZONE | REV | DESCRIPTION | DATE | CHANGED BY | APPROVED |
| | C | ECO-14665 | 06/16/2025 | DMAY | |



INSERT CAP
FACE VIEW



RECOMMENDED
MOUNTING HOLE

LABEL 1

FCA-M8-JNLCM1MT-XX
MRF: 335J8
SN: XXXXXXXXXXXXXXXXXXXX

TABLE 1: PINOUT DIAGRAM

| END A | FIBER | END B |
|-------|--------|-------|
| S1 | BLUE | S1-LC |
| S2 | GREEN | S2-LC |
| P1 | ORANGE | P1-LC |
| P2 | BROWN | P2-LC |

LABEL 2

XX-LC

TABLE 2: CABLE LENGTH

| PART NO. | FEET | METERS |
|-------------------|------|--------|
| FCA-M8-JNLCM1MT-1 | 3.3 | 1 |
| FCA-M8-JNLCM1MT-3 | 9.8 | 3 |

- NOTES:**
- IDENTIFICATION LABEL PLACEMENT IS APPROX CENTERED.
 - CABLE ASSEMBLY DELIVERED HAND COILED.
 - FABRICATED, INSPECTED AND TESTED IN ACCORDANCE WITH IPC-A-640 CLASS 3.

- CABLE LENGTH TOLERANCE:**
- LESS THAN (OR EQUAL TO) 20FT: +6"
 - GREATER THAN 20FT - 100FT: +12"
 - GREATER THAN 100FT: +36"

THE INFORMATION CONTAINED IN THIS DRAWING IS THE SOLE PROPERTY OF INFINITE ELECTRONICS, INC. ANY REPRODUCTION IN PART OR WHOLE WITHOUT THE WRITTEN PERMISSION OF INFINITE ELECTRONICS, INC. IS PROHIBITED. THESE COMMODITIES, TECHNOLOGY OR SOFTWARE WERE EXPORTED FROM THE UNITED STATES IN ACCORDANCE WITH THE EXPORT ADMINISTRATION REGULATIONS. DIVERSION CONTRARY TO U.S. LAW PROHIBITED.

UNLESS OTHERWISE SPECIFIED LEADING DIMENSIONS ARE INCHES DIMENSIONS IN [] ARE MILLIMETERS


TOLERANCES:

| | |
|---------------------|------------------|
| X = ±.2 [5] | FRACTIONS ± 1/32 |
| .XX = ±.02 [0.5] | ANGLES ± 1° |
| .XXX = ±.005 [0.13] | |

CABLE LENGTH TOLERANCES:

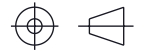
| | |
|--------------------------|-----------------|
| ≤12 [305] | = +1 [25] / -0 |
| >12 [305] ≤ 60 [1524] | = +2 [51] / -0 |
| >60 [1524] ≤ 120 [3048] | = +4 [102] / -0 |
| >120 [3048] ≤ 300 [7620] | = +6 [152] / -0 |
| >300 [7620] | = +5% / -0 |

ALL DIMENSIONS ARE FOR REFERENCE ONLY AND SUBJECT TO CHANGE WITHOUT NOTICE. UN-DIMENSIONED NON-CRITICAL FEATURES MAY VARY IN SIZE AND LOCATION. COLORS MAY VARY.



an INFINIT@ brand

Website: www.L-com.com
Phone: 1.800.341.5266 | 1.978.682.6936



INTERPRET ALL DIMENSIONS AND TOLERANCES PER ASME Y14.5

| | |
|-------|--------|
| SCALE | SHEET |
| NONE | 1 OF 2 |

DESCRIPTION

COTS M83526 (TFOCA II EQUIVALENT) 83526/17 4 CHANNEL JAM-NUT RECEPTACLE TO LC 4X OM1 62.5/125/2mm, 1m

| SIZE | CAGE CODE | DRAWN BY | ITEM NO. | REV |
|------|-----------|----------|-------------------|-----|
| A | 43321 | SREITER | FCA-M8-JNLCM1MT-1 | C |

6

5

4

3

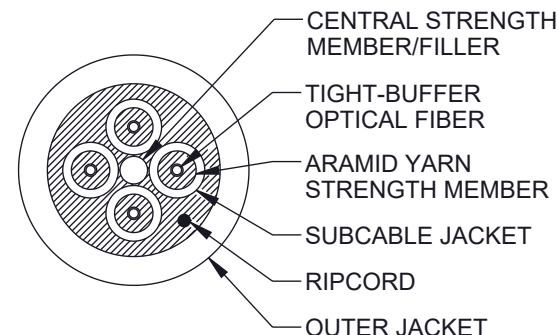
2

1

F

F

4 CHANNEL
B-SERIES BREAKOUT – MIL-TAC CABLES



E

E

D

D

| FIBER PERFORMANCE | |
|--------------------------------|-------------------|
| INDUSTRY STANDARD DESIGNATION | OM1 ISO/IEC 11801 |
| CORE/CLADDING DIAMETER (μm) | 62.5/125 |
| WAVELENGTH (nm) | 850/1310 |
| SECONDARY BUFFER DIAMETER (μm) | 900 |

| MECHANICAL AND ENVIRONMENTAL | |
|------------------------------|----------------|
| IMPACT RESISTANCE TIA-455-25 | 1500 IMPACTS |
| CRUSH RESISTANCE TIA-455-41 | 2200 N/cm |
| OPERATING TEMPERATURE | -55°C TO +85°C |
| STORAGE TEMPERATURE | -70°C TO +85°C |

C

C

| INSTALLATION AND OPERATING CHARACTERISTICS | | |
|--|-------------------|-----------------|
| | INSTALLATION | OPERATING |
| MAX TENSILE LOAD | 2,200 N (490 lbs) | 550 N (120 lbs) |
| MIN BEND RADIUS | 7.5 cm (3.0 in) | 3.8 cm (1.5 in) |

| CABLE CHARACTERISTICS | |
|-----------------------|------------------|
| JACKET COLOR | BLACK |
| JACKET MATERIAL | POLYURETHANE |
| BUFFER MATERIAL | HARD ELASTOMERIC |
| SUBUNIT OD | 2.0 mm |
| CABLE DIAMETER | 7.5 mm (0.30 in) |

B

B

A

A

THE INFORMATION CONTAINED IN THIS DRAWING IS THE SOLE PROPERTY OF INFINITE ELECTRONICS, INC. ANY REPRODUCTION IN PART OR WHOLE WITHOUT THE WRITTEN PERMISSION OF INFINITE ELECTRONICS, INC. IS PROHIBITED. THESE COMMODITIES, TECHNOLOGY OR SOFTWARE WERE EXPORTED FROM THE UNITED STATES IN ACCORDANCE WITH THE EXPORT ADMINISTRATION REGULATIONS. DIVERSION CONTRARY TO U.S. LAW PROHIBITED.

ALL DIMENSIONS ARE FOR REFERENCE ONLY AND SUBJECT TO CHANGE WITHOUT NOTICE. UN-DIMENSIONED/NON-CRITICAL FEATURES MAY VARY IN SIZE AND LOCATION. COLORS MAY VARY.

L-com
an INFINIT[®] brand

Website: www.L-com.com
Phone: 1.800.341.5266 | 1.978.682.6936



INTERPRET ALL DIMENSIONS AND TOLERANCES PER ASME Y14.5

| | |
|-------|--------|
| SCALE | SHEET |
| NONE | 2 OF 2 |

DESCRIPTION

COTS M83526 (TFOCA II EQUIVALENT) 83526/17 4 CHANNEL JAM-NUT RECEPTACLE TO LC 4X OM1 62.5/125/2mm, 1m

| SIZE | CAGE CODE | DRAWN BY | ITEM NO. | REV |
|------|-----------|----------|-------------------|-----|
| A | 43321 | SREITER | FCA-M8-JNLCM1MT-1 | C |

6

5

4

3

2

1