

THE INFORMATION CONTAINED IN THIS DRAWING IS THE SOLE PROPERTY OF L-COM, INC. ANY REPRODUCTION IN PART OR WHOLE WITHOUT THE WRITTEN PERMISSION OF L-COM, INC. IS PROHIBITED.

REVISIONS			
REV	DESCRIPTION	DATE	APPROVED
A	INITIAL RELEASE	4/26/12	D.GRIFFIN
B	ECN 6839: REVISED NOTE 2, ADDED NOTE 3	5/15/13	D.FRISIELLO

1X, #10-32 UNF-2A X 1.25" LG. STUD



1X, #8-32 UNC-2A X .312" LG. FLUSH HEAD STUD



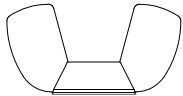
1X, #8-32 UNC-2B HEX NUT WITH STAR WASHER



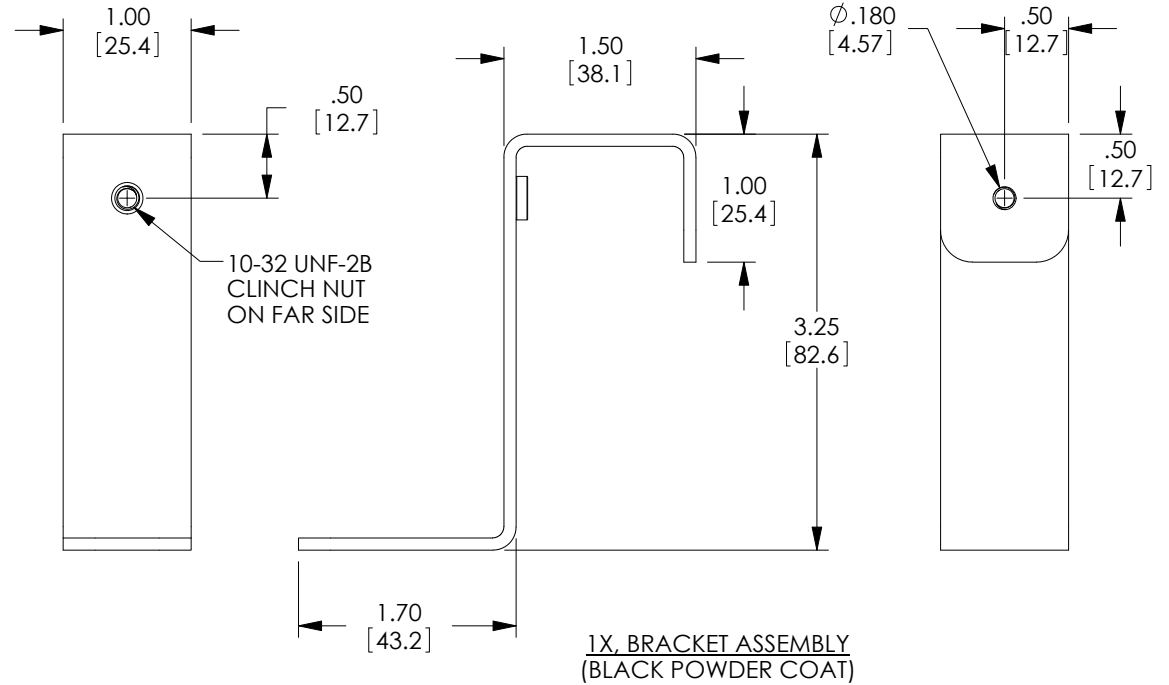
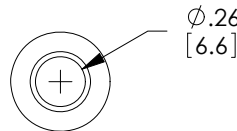
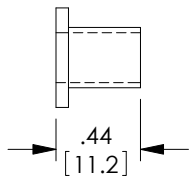
1X, #10-32 UNF-2B HEX NUT WITH STAR WASHER



1X, #10-32 UNF-2B NYLON WING NUT



1X, NYLON BUSHING



NOTES:

- ALL DIMENSIONS SHOWN ARE FOR REFERENCE ONLY.
- COMPONENTS SHALL BE PACKAGED LOOSELY IN A SINGLE CLEAR POLY BAG LABELED AS FOLLOWS:

FE-STMAB

- CENTER THE LABEL ON THE CLEAR BAG.

<p>UNLESS OTHERWISE SPECIFIED, DIMENSIONS ARE IN INCHES [mm]</p> <p>OVERALL CABLE LENGTH TOLERANCE:</p> <p>≤12 [305] = +1 [25] / -0</p> <p>>12 [305] ≤60 [1524] = +2 [51] / -0</p> <p>>60 [1524] ≤120 [3048] = +4 [102] / -0</p> <p>>120 [3048] ≤300 [7620] = +6 [152] / -0</p> <p>>300 [7620] = +3% / -0%</p> <p>ALL OTHER DIMENSIONAL TOLERANCES:</p> <p>.X = ±.2</p> <p>.XX = ±.02</p> <p>.XXX = ±.005</p>	<p>APPROVALS</p> <p>D.FRISIELLO</p>	<p>DATE</p> <p>4/23/12</p>		<p>45 BEECHWOOD DRIVE NORTH ANDOVER, MA 01845</p>			
	<p>CHECKED BY</p> <p>M.SEDLESKI</p>	<p>DATE</p> <p>4/23/12</p>			<p>CATEGORY</p> <p>FIBER OPTICS</p>		
	<p>PROJECTION</p>	<p>CONFIGURATION DETAILS OF UNDIMENSIONED FEATURES MAY VARY</p>	<p>PRODUCT DESCRIPTION</p> <p>SPLICE TRAY MNTG ASSBLY BRACKET</p>	<p>SIZE</p> <p>A</p>	<p>FSCM NO.</p> <p>43321</p>	<p>DWG. NO.</p> <p>FE-STMAB</p>	<p>REV.</p> <p>B</p>
	<p>COLOR VARIATIONS MAY OCCUR</p>	<p>SCALE: NONE</p>	<p>CAD FILE: FE-STMAB.SLDDRW</p>	<p>SHEET 1 OF 1</p>			