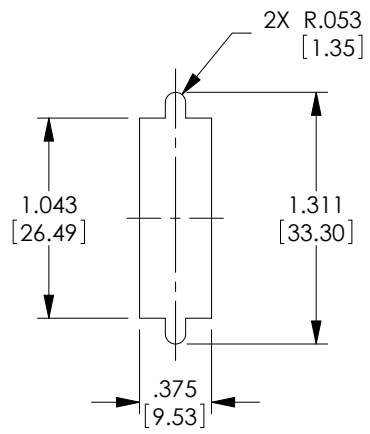
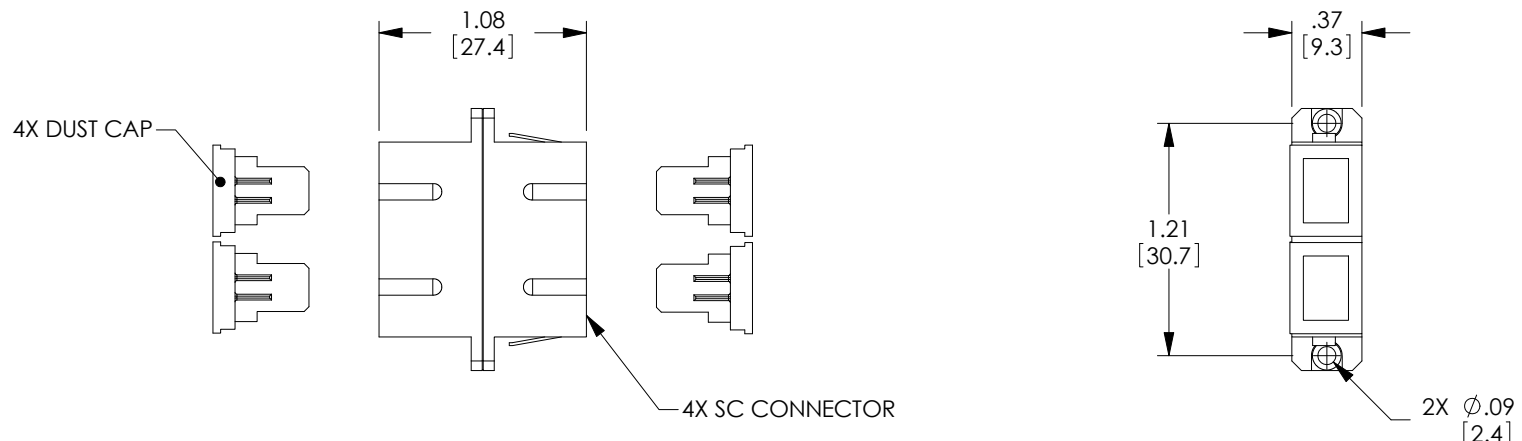


THE INFORMATION CONTAINED IN THIS DRAWING IS THE SOLE PROPERTY OF L-COM, INC. ANY REPRODUCTION IN PART OR WHOLE WITHOUT THE WRITTEN PERMISSION OF L-COM, INC. IS PROHIBITED.

REVISIONS			
REV	DESCRIPTION	DATE	APPROVED
A	DRAWING REPLACES FOA-005M-OD1	9/26/14	D.FRISIELLO



NOTES:

MATERIAL:
 SLEEVE: PHOSPHOR BRONZE
 BODY: ZINC ALLOY
 DUST CAP: PVC
 SPRING LEVER: PBT + 30% GLASS FIBER
 MOUNTING CLIPS: STAINLESS STEEL
 RIVET: COPPER

FINISH:
 BODY: NICKEL PLATE
 RIVET: TIN PLATE

ALL DIMENSIONS ARE FOR REFERENCE ONLY.

COMPONENT SHALL BE INDIVIDUALLY PACKAGED IN ACCORDANCE WITH L-COM SPECIFICATION PS-0031.

REGULATORY COMPLIANCE:
 CE2011/65/EU (RoHS DIRECTIVE)

RECOMMENDED
 PANEL HOLE

UNLESS OTHERWISE SPECIFIED, DIMENSIONS ARE IN INCHES [mm] OVERALL CABLE LENGTH TOLERANCE: ≤12 [305] = +1 [25] / -0 >12 [305] ≤60 [1524] = +2 [51] / -0 >60 [1524] ≤120 [3048] = +4 [102] / -0 >120 [3048] ≤300 [7620] = +6 [152] / -0 >300 [7620] = +5% / -0%	APPROVALS	DATE		45 BEECHWOOD DRIVE NORTH ANDOVER, MA 01845
	DRAWN BY C.McCORMICK	12/21/00		CATEGORY
ALL OTHER DIMENSIONAL TOLERANCES: .X = ±.2 [5.08] .XX = ±.02 [1.51] .XXX = ±.005 [1.13]	CHECKED BY DFP	01/12/01	PRODUCT DESCRIPTION	
PROJECTION 	APPROVED BY R.CARRICK	CONFIGURATION DETAILS OF UNDIMENSIONED FEATURES MAY VARY	ADPTR,METAL SC-SC DUPLX BRONZE	
	COLOR VARIATIONS MAY OCCUR	SIZE A	FSCM NO. 43321	DWG. NO. FOA-005M
		SCALE: NONE	CAD FILE: FOA-005M.SLDDRW	SHEET 1 OF 1