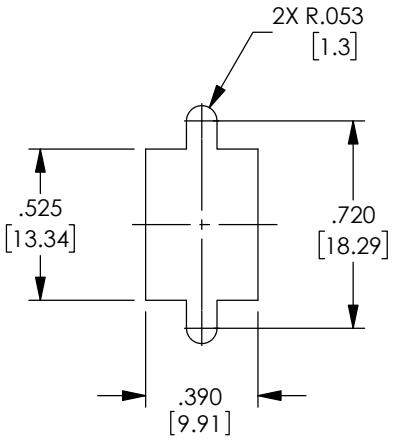
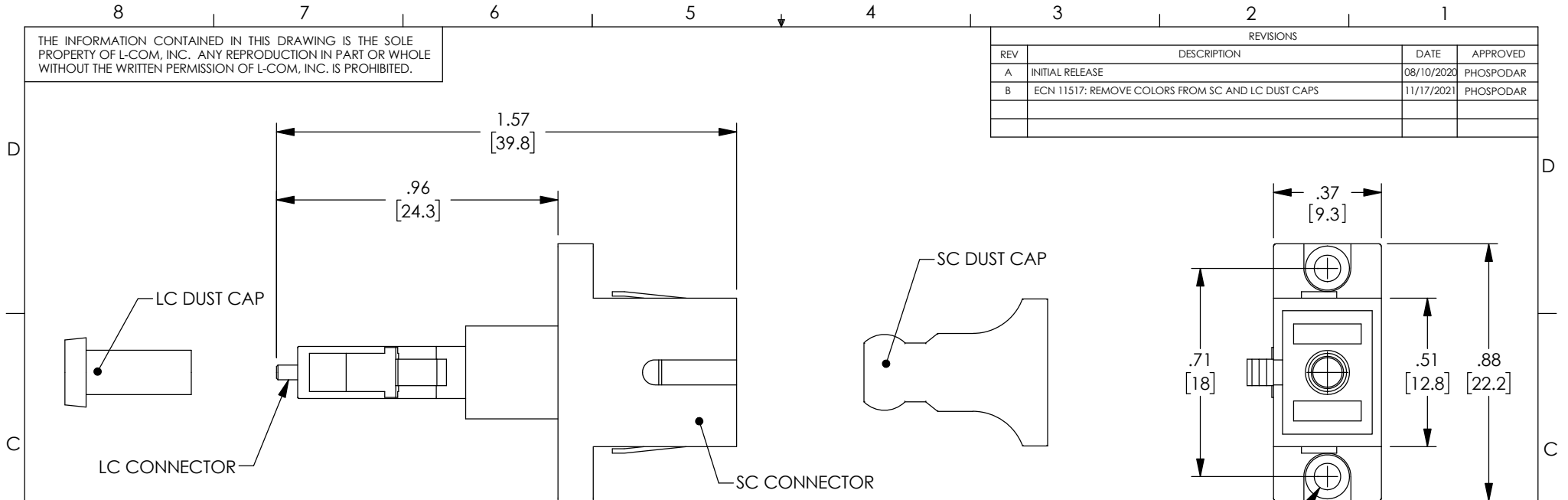



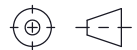
THE INFORMATION CONTAINED IN THIS DRAWING IS THE SOLE PROPERTY OF L-COM, INC. ANY REPRODUCTION IN PART OR WHOLE WITHOUT THE WRITTEN PERMISSION OF L-COM, INC. IS PROHIBITED.

REVISIONS			
REV	DESCRIPTION	DATE	APPROVED
A	INITIAL RELEASE	08/10/2020	PHOSPODAR
B	ECN 11517: REMOVE COLORS FROM SC AND LC DUST CAPS	11/17/2021	PHOSPODAR



NOTES:
MATERIAL:
SLEEVE: CERAMIC
SC BODY: ZINC, NICKEL PLATED
LC BODY: ABS PLASTIC, BLUE
SC DUST CAP: PVC
LC DUST CAP: PVC
MOUNTING CLIP: STAINLESS STEEL.

FEMALE SC CONNECTOR ASSEMBLY POLISH TYPE: PC
MALE LC CONNECTOR ASSEMBLY POLISH TYPE: PC
RECOMMENDED PANEL THICKNESS: 0.06" [1.5]
ALL DIMENSIONS ARE FOR REFERENCE ONLY.
COMPONENT SHIPPED WITH DUST CAPS INSTALLED.
COMPONENT SHALL BE INDIVIDUALLY PACKAGED IN ACCORDANCE WITH L-COM SPEC. PS-0031.

UNLESS OTHERWISE SPECIFIED, DIMENSIONS ARE IN INCHES [mm] OVERALL CABLE LENGTH TOLERANCE: ≤12 [305] = +1 [25] / -0 >12 [305] ≤60 [1524] = +2 [51] / -0 >60 [1524] ≤120 [3048] = +4 [102] / -0 >120 [3048] ≤300 [7620] = +6 [152] / -0 >300 [7620] = +5% / -0 ALL OTHER DIMENSIONAL TOLERANCES: .X = ± .2 [5] FRACTIONS ± 1/32 .XX = ± .02 [5] ANGLES ± 1° .XXX = ± .005 [13]	APPROVALS	DATE	 50 High Street, West Mill, North Andover, MA 01845 USA. Phone: 1.800.341.5266 1.978.682.6936
	DRAWN BY DFRISIELLO	07/13/2020	
THIRD-ANGLE PROJECTION 	CHECKED BY PHOSPODAR	08/10/2020	PRODUCT DESCRIPTION LC Male to SC Female Single Mode Hybrid Fiber Adapter
COLOR VARIATIONS MAY OCCUR	APPROVED BY PHOSPODAR	08/10/2020	