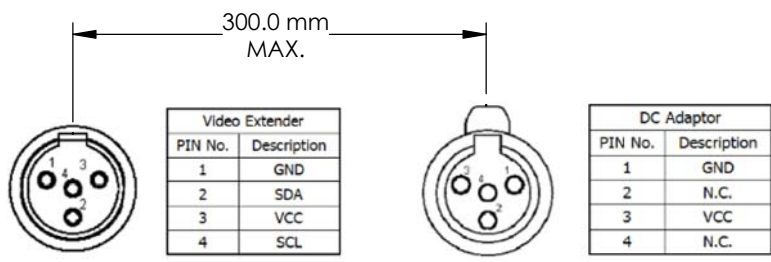
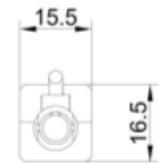
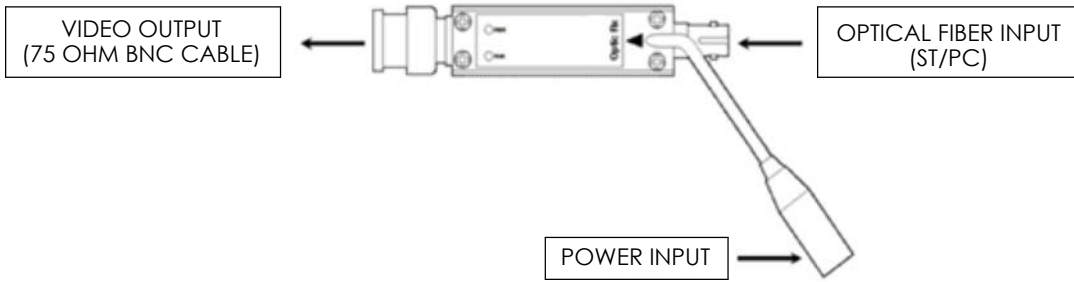


THE INFORMATION CONTAINED IN THIS DRAWING IS THE SOLE PROPERTY OF L-COM, INC. ANY REPRODUCTION IN PART OR WHOLE WITHOUT THE WRITTEN PERMISSION OF L-COM, INC. IS PROHIBITED.

REVISIONS			
REV	DESCRIPTION	DATE	APPROVED
A	INITIAL RELEASE	06/02/2020	PHOSPODAR




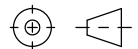
SDI STANDARD	DATA RATE	TYPICAL REACH
3G-SDI	2.97 Gbps	30 km

NOTES:

ELECTRICAL CONNECTOR (VIDEO): 1 X SDI INPUT/OUTPUT BNC (75 OHM) FEMALE

ELECTRICAL CONNECTOR (POWER): INPUT: DC 5V, 1A  
OUTPUT: (110-220VAC)

OPTICAL CONNECTORS: 1 X ST FEMALE, SINGLE MODE

UNLESS OTHERWISE SPECIFIED, DIMENSIONS ARE IN INCHES [mm] OVERALL CABLE LENGTH TOLERANCE: ≤12 [305] = +1 [25] / -0 >12 [305] ≤60 [1524] = +2 [51] / -0 >60 [1524] ≤120 [3048] = +4 [102] / -0 >120 [3048] ≤300 [7620] = +6 [152] / -0 >300 [7620] = +5% / -0 ALL OTHER DIMENSIONAL TOLERANCES: .X = ± .2 [5]   FRACTIONS ± 1/32 .XX = ± .02 [5]   ANGLES ± 1° .XXX = ± .005 [13]	APPROVALS DRAWN BY: DFRISIELLO CHECKED BY: PHOSPODAR APPROVED BY: PHOSPODAR	DATE 06/01/2020 06/02/2020 06/02/2020	 50 High Street, West Mill, North Andover, MA 01845 USA. Phone: 1.800.341.5266 1.978.682.6936
	THIRD-ANGLE PROJECTION 	CONFIGURATION DETAILS OF UNDIMENSIONED FEATURES MAY VARY COLOR VARIATIONS MAY OCCUR	
SIZE: <b>A</b>		CAGE CODE: <b>43321</b>	ITEM NO.: <b>FOCV-3GSDI-SRXI</b>
SCALE: NONE		CAD FILE: FOCV-3GSDI-SRXI.SLDDRW	SHEET 1 OF 1