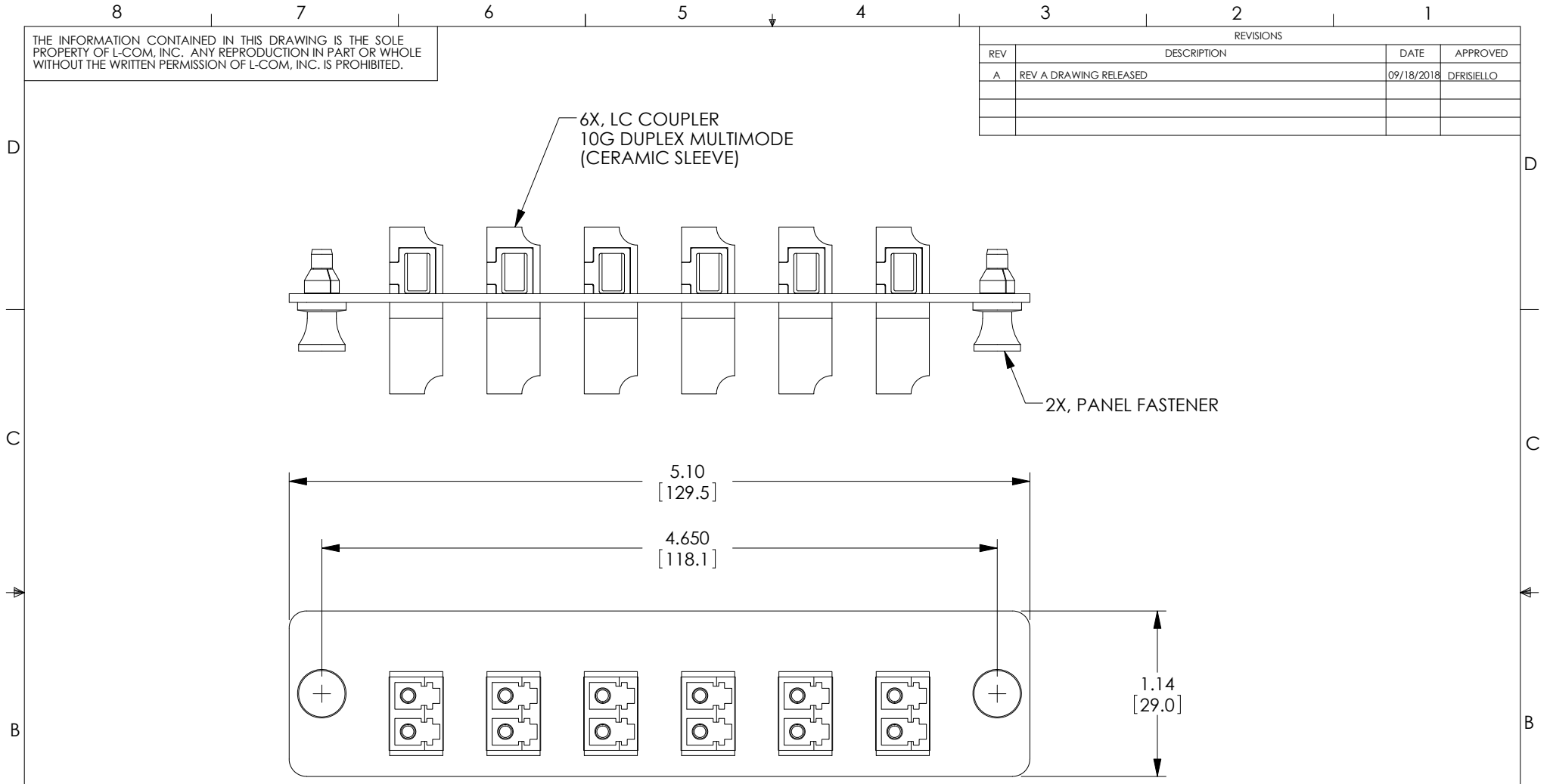


THE INFORMATION CONTAINED IN THIS DRAWING IS THE SOLE PROPERTY OF L-COM, INC. ANY REPRODUCTION IN PART OR WHOLE WITHOUT THE WRITTEN PERMISSION OF L-COM, INC. IS PROHIBITED.

REVISIONS			
REV	DESCRIPTION	DATE	APPROVED
A	REV A DRAWING RELEASED	09/18/2018	DFRISIELLO



NOTES:

PANEL MATERIAL: .06 THK COLD ROLLED STEEL.
FASTENER MATERIAL: THERMOPLASTIC

FINISH: BLACK POWDER COAT.

RECOMMENDED MOUNTING HOLE FOR MATING
FASTENER ϕ .252 +.002/-0.000

SUPPLIED WITH DUST CAPS INSTALLED. (NOT SHOWN)

COMPONENT SHALL BE INDIVIDUALLY PACKAGED IN
ACCORDANCE WITH L-COM SPECIFICATION PS-0031.

REGULATORY COMPLIANCE:
CE2011/65/EU (RoHS DIRECTIVE)

UNLESS OTHERWISE SPECIFIED, DIMENSIONS ARE IN INCHES [mm] OVERALL CABLE LENGTH TOLERANCE: ≤ 12 [305] = +1 [25] / -0 > 12 [305] ≤ 60 [1524] = +2 [51] / -0 > 60 [1524] ≤ 120 [3048] = +4 [102] / -0 > 120 [3048] ≤ 300 [7620] = +6 [152] / -0 > 300 [7620] = +5% / -0% ALL OTHER DIMENSIONAL TOLERANCES: .X = \pm .2 [5.08] .XX = \pm .02 [51] .XXX = \pm .005 [1.27]	APPROVALS DRAWN BY DFRISIELLO CHECKED BY MMARTINEZ APPROVED BY MMARTINEZ	DATE 09/18/2018 09/18/2018 09/18/2018	50 HIGH STREET NORTH ANDOVER, MA 01845 CATEGORY SUB PANELS		
	CONFIGURATION DETAILS OF UNDIMENSIONED FEATURES MAY VARY			PRODUCT DESCRIPTION FSP PNL 6 LC DPX 10G CPLR CRMC	
PROJECTION 	COLOR VARIATIONS MAY OCCUR	SIZE A	CAGE CODE 43321	DWG. NO. FSP-LCD6-10G-CR	REV. A
SCALE: NONE		CAD FILE: FSP-LCD6-10G-CR.SLDDRW		SHEET 1 OF 1	