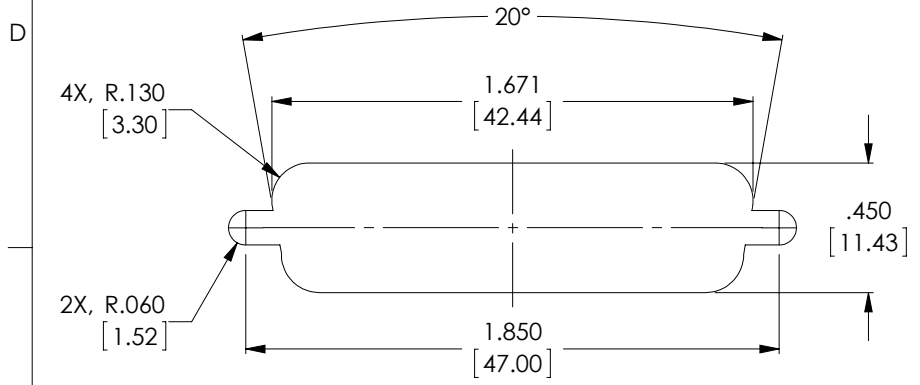


THE INFORMATION CONTAINED IN THIS DRAWING IS THE SOLE PROPERTY OF L-COM, INC. ANY REPRODUCTION IN PART OR WHOLE WITHOUT THE WRITTEN PERMISSION OF L-COM, INC. IS PROHIBITED.

**RoHS Compliant** ✓

REVISIONS			
REV	DESCRIPTION	DATE	APPROVED
A	INITIAL RELEASE	11/15/12	D.GRIFFIN



RECOMMENDED PANEL OPENING

**NOTE: SDG450XS JACKSCREWS AND SDHS HEX NUTS ARE REQUIRED FOR PANEL MOUNTING**  
**\*PANEL THICKNESS MUST NOT EXCEED .062 [1.57]**

**NOTES:**

**MATERIAL:**

SHELL: STEEL  
 CONTACTS: COPPER ALLOY  
 INSULATOR: PBT FIBER REINFORCED (UL94V-0 RATED)

**FINISH:**

SHELL: TIN/NICKEL PLATED  
 CONTACTS: GOLD FLASH PLATED, 1-5μ INCHES

**ELECTRICAL:**

CURRENT RATING: 3 AMP  
 INSULATION RESISTANCE: 1000 MΩ MIN @500 VDC  
 DIELECTRIC WITHSTANDING VOLTAGE: 1000 VAC (FOR ONE MINUTE)

**MISCELLANEOUS:**

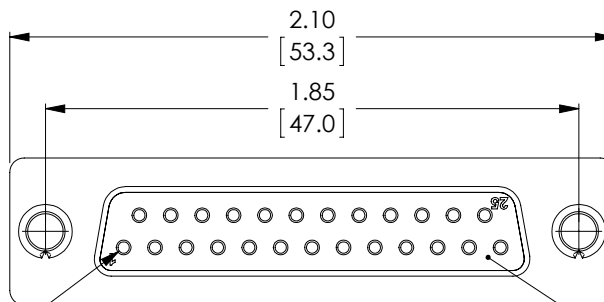
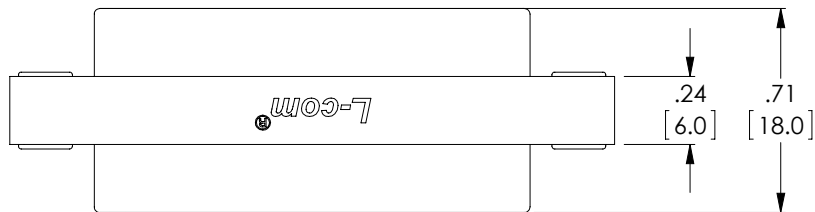
OPERATING TEMPERATURE RANGE: -55°C TO +105°C.  
 ALL CONTACTS WIRED STRAIGHT THROUGH.  
 COMPONENT SHALL BE TESTED FOR CONTINUITY.  
 ALL DIMENSIONS ARE FOR REFERENCE ONLY.

**LABELING:**

PANTONE 2945 BLUE. "L-COM" FONT MyriaMM ITALIC.  
 "GENDER CHANGER" FONT ARIAL BOLD, TEXT HEIGHTS; .085"  
 TEXT COLOR; WHITE.

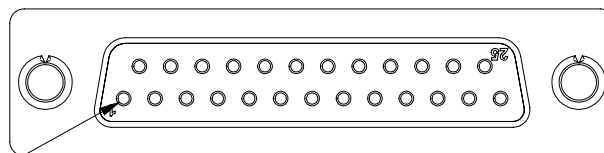
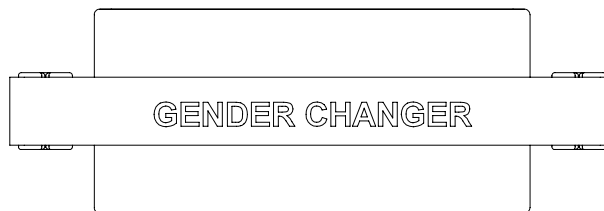
**PACKAGING:**

COMPONENT SHALL BE INDIVIDUALLY PACKAGED IN ACCORDANCE WITH L-COM SPECIFICATION PS-0031.



PIN 1

2X, 25 PIN FEMALE D-SUB CONNECTOR



PIN 1

UNLESS OTHERWISE SPECIFIED, DIMENSIONS ARE IN INCHES [mm] OVERALL CABLE LENGTH TOLERANCE: <math>\le 12 [305] = +1 [25] / -0</math> <math>>12 [305] \le 60 [1524] = +2 [51] / -0</math> <math>>60 [1524] \le 120 [3048] = +4 [102] / -0</math> <math>>120 [3048] \le 300 [7620] = +6 [152] / -0</math> <math>>300 [7620] = +3\% / -0\%</math> ALL OTHER DIMENSIONAL TOLERANCES: .X = ±.2 .XX = ±.02 .XXX = ±.005	APPROVALS	DATE		45 BEECHWOOD DRIVE NORTH ANDOVER, MA 01845		
	DRAWN BY D. DESJARDIN CHECKED BY D. PARHAM APPROVED BY S. SMITH	11/2/12 11/5/12 11/15/12			CATEGORY D-SUBMINIATURE	
PROJECTION 	CONFIGURATION DETAILS OF UNDIMENSIONED FEATURES MAY VARY	PRODUCT DESCRIPTION ADPT, GNDR CHGR DB25 SLIM F/F NO HARDWARE	SIZE <b>A</b>	FSCM NO. <b>43321</b>	DWG. NO. GCP25F	REV. <b>A</b>
SCALE: NONE			CAD FILE: GCP25F.SLDDRW		SHEET 1 OF 1	