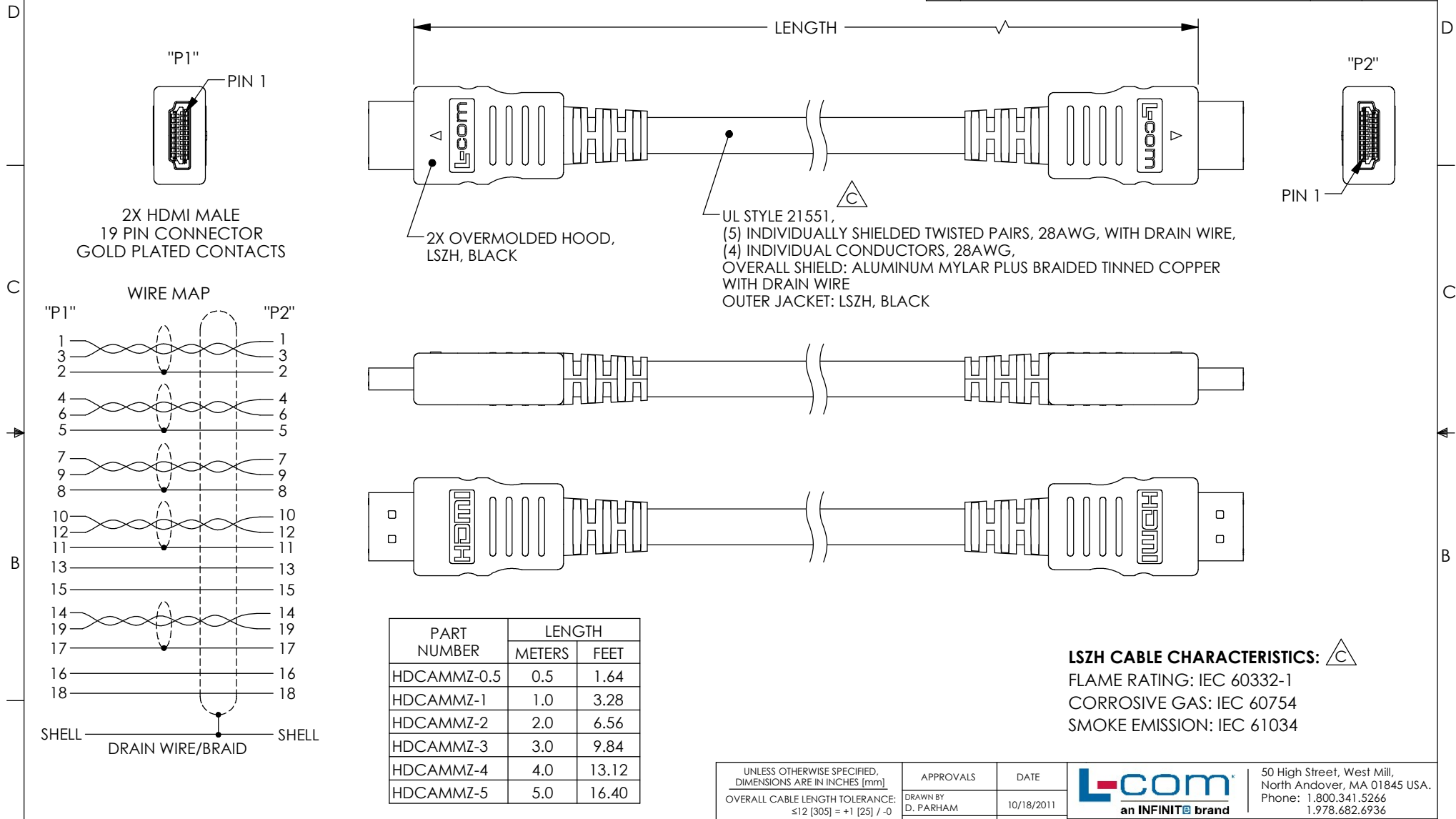
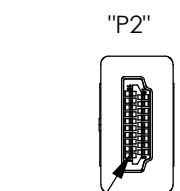
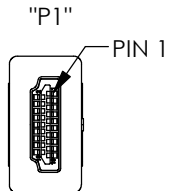


THE INFORMATION CONTAINED IN THIS DRAWING IS THE SOLE PROPERTY OF L-COM, INC. ANY REPRODUCTION IN PART OR WHOLE WITHOUT THE WRITTEN PERMISSION OF L-COM, INC. IS PROHIBITED.

REVISIONS			
REV	DESCRIPTION	DATE	APPROVED
A	INITIAL RELEASE	10/20/11	D.GRIFFIN
B	ECN 7158: UPDATED OVERMOLD DESIGN AND REVISED ROHS NOTE	11/14/13	D. DESJARDIN
C	ECN 10853: REVISE UL STYLE TO 21551, ADD LSZH CBL CHARACTERISTICS TO DWG, NEW FORMAT	12/22/2020	MBLACKWOOD

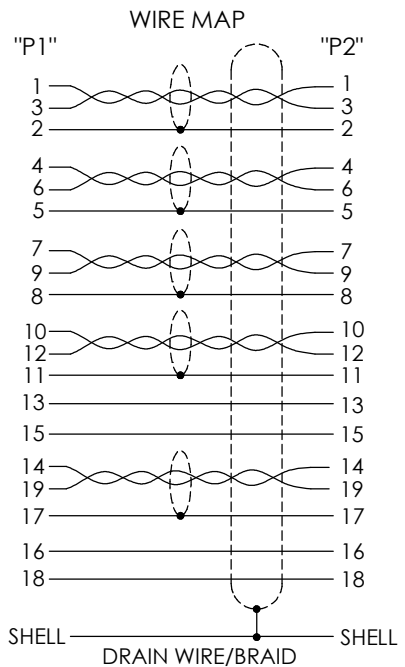


2X HDMI MALE
19 PIN CONNECTOR
GOLD PLATED CONTACTS



2X OVERMOLDED HOOD,
LSZH, BLACK

UL STYLE 21551,
(5) INDIVIDUALLY SHIELDED TWISTED PAIRS, 28AWG, WITH DRAIN WIRE,
(4) INDIVIDUAL CONDUCTORS, 28AWG,
OVERALL SHIELD: ALUMINUM MYLAR PLUS BRAIDED TINNED COPPER
WITH DRAIN WIRE
OUTER JACKET: LSZH, BLACK



PART NUMBER	LENGTH	
	METERS	FEET
HDCAMMZ-0.5	0.5	1.64
HDCAMMZ-1	1.0	3.28
HDCAMMZ-2	2.0	6.56
HDCAMMZ-3	3.0	9.84
HDCAMMZ-4	4.0	13.12
HDCAMMZ-5	5.0	16.40

LSZH CABLE CHARACTERISTICS:

FLAME RATING: IEC 60332-1
CORROSIVE GAS: IEC 60754
SMOKE EMISSION: IEC 61034

- NOTES:**
- CABLE ASSEMBLY SHALL BE TESTED FOR CONTINUITY.
 - CABLE ASSEMBLY SHALL BE INDIVIDUALLY PACKAGED IN ACCORDANCE WITH L-COM SPEC. PS-0031.
 - DUST COVERS INSTALLED FOR SHIPPING (NOT SHOWN).

UNLESS OTHERWISE SPECIFIED, DIMENSIONS ARE IN INCHES [mm]	APPROVALS	DATE	50 High Street, West Mill, North Andover, MA 01845 USA. Phone: 1.800.341.5266 1.978.682.6936
	OVERALL CABLE LENGTH TOLERANCE: ≤12 [305] ≤60 [1524] = +1 [25] / -0 >12 [305] ≤60 [1524] = +2 [51] / -0 >60 [1524] ≤120 [3048] = +4 [102] / -0 >120 [3048] ≤300 [7620] = +6 [152] / -0 >300 [7620] = +5% / -0	DRAWN BY D. PARHAM 10/18/2011	
ALL OTHER DIMENSIONAL TOLERANCES: .X = ± .2 [5] FRACTIONS .XX = ± .02 [5] ± 1/32 .XXX = ± .005 [13] ANGLES ± 1°	APPROVED BY P. McNEIL 10/18/2011	CONFIGURATION DETAILS OF UNDIMENSIONED FEATURES MAY VARY	CATEGORY AUDIO/VIDEO
THIRD-ANGLE PROJECTION 	COLOR VARIATIONS MAY OCCUR	PRODUCT DESCRIPTION CA HDMI M-M LSZH	SCALE: NONE CAD FILE: HDCAMMZ.SLDDRW
	SIZE A	CAGE CODE 43321	DWG. NO. HDCAMMZ
			REV. C