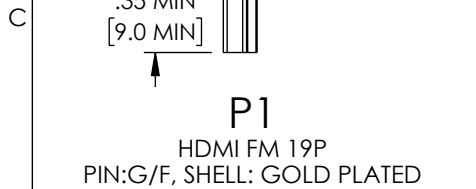
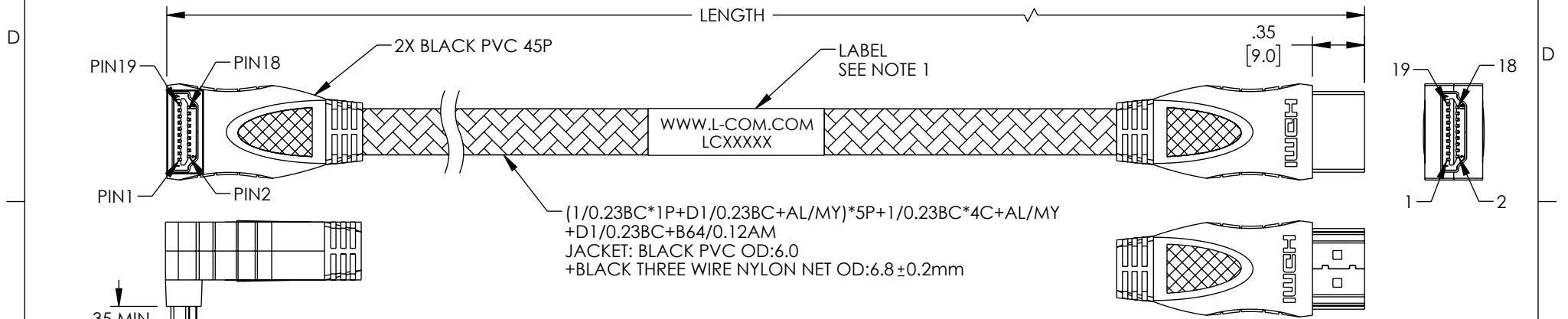


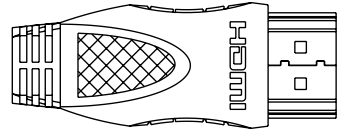
THE INFORMATION CONTAINED IN THIS DRAWING IS THE SOLE PROPERTY OF L-COM, INC. ANY REPRODUCTION IN PART OR WHOLE WITHOUT THE WRITTEN PERMISSION OF L-COM, INC. IS PROHIBITED.

REVISION					
ZONE	REV	DESCRIPTION	DATE	CHANGED BY	APPROVED
	A	INITIAL RELEASE	03/02/2023	DMAY	DGUTTADAURO



PIN Assignment

P1 HDMI AM	P2 HDMI AM
1	1
3	3
5	5
4	4
6	6
2	2
7	7
9	9
11	11
10	10
12	12
8	8
14	14
19	19
17	17
13	13
15	15
16	16
18	18
Shell	Shell



PART NUMBER	LENGTH	
	FEET	METERS
HDMI-MM-RASD-1M	3.28	1.0±.03
HDMI-MM-RASD-3M	9.84	3.0±.03

- NOTES:
- CABLE ASSEMBLY LENGTH LABEL PLACEMENT: 36 INCHES OR LESS, ONE LABEL, APPROXIMATELY CENTERED. LONGER THAN 36 INCHES, TWO LABELS APPROXIMATELY 6 INCHES FROM EACH CONNECTOR.
 - CABLE ASSEMBLY SHALL BE TESTED FOR CONTINUITY.
 - CABLE ASSEMBLY SHALL BE INDIVIDUALLY PACKAGED IN ACCORDANCE WITH L-COM SPECIFICATION PS-0031.

REGULATORY COMPLIANCE:
EU RoHS DIRECTIVE (MOST RECENT RELEASED VERSION)

UNLESS OTHERWISE SPECIFIED, DIMENSIONS ARE IN INCHES [mm] OVERALL CABLE LENGTH TOLERANCE: ≤12 [305] = +1 [25] / -0 >12 [305] ≤60 [1524] = +2 [51] / -0 >60 [1524] ≤120 [3048] = +4 [102] / -0 >120 [3048] ≤300 [7620] = +6 [152] / -0 >300 [7620] = +5% / -0 ALL OTHER DIMENSIONAL TOLERANCES: .X = ±.2 [5] FRACTIONS ± 1/32 .XX = ±.02 [5] ANGLES ± 1° .XXX = ±.005 [13]	APPROVALS DRAWN BY DMAY CHECKED BY HBAKKE APPROVED BY DGUTTADAURO	DATE 03/02/2023 03/03/2023 03/03/2023	L-com an INFINITI® brand 50 High Street, West Mill, North Andover, MA 01845 USA. Phone: 1.800.341.5266 1.978.682.6936	
	CONFIGURATION DETAILS OF UNDIMENSIONED FEATURES MAY VARY		CATEGORY AUDIO/VIDEO	
	THIRD-ANGLE PROJECTION 	COLOR VARIATIONS MAY OCCUR	PRODUCT DESCRIPTION HDMI 2.0 90° M/M CABLE, NYLON BRAID 4K@60Hz, RIGHT ANGLE STRAIGHT/DOWN	SCALE: NONE CAD FILE: HDMI-MM-RASD.SLDDRW
	SIZE A CAGE CODE 43321 ITEM NO. HDMI-MM-RASD		REV. A	SHEET 1 OF 1