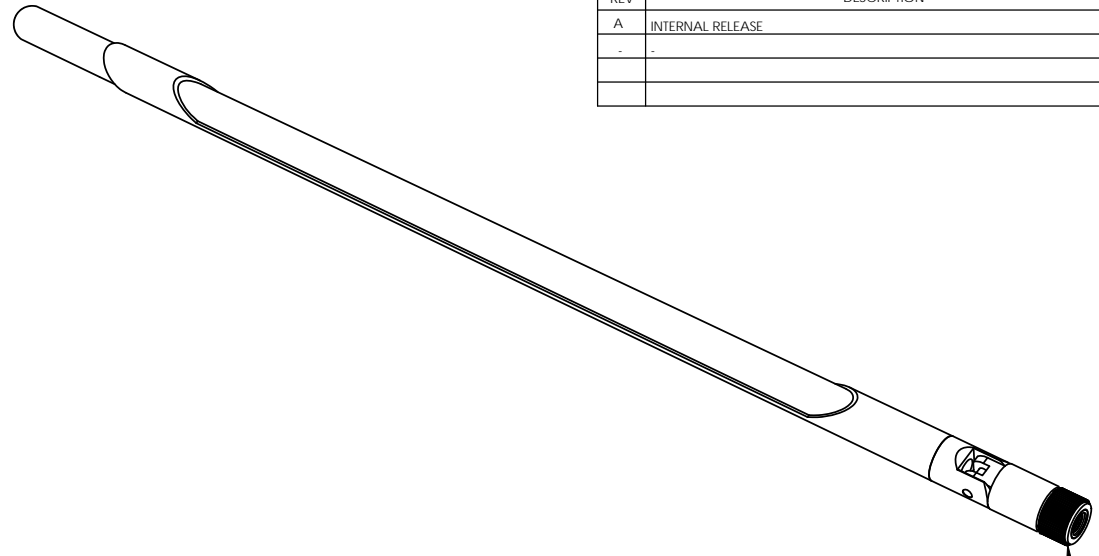
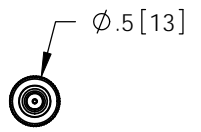
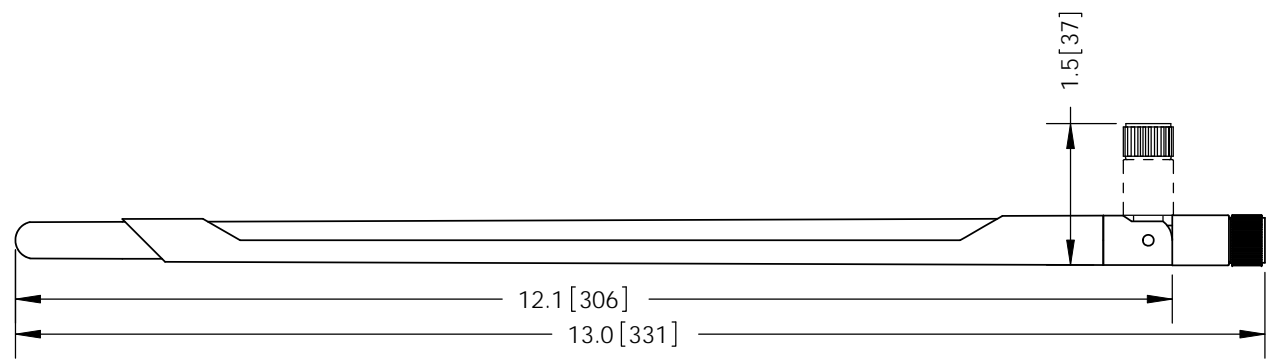


THE INFORMATION CONTAINED IN THIS DRAWING IS THE SOLE PROPERTY OF L-COM, INC. ANY REPRODUCTION IN PART OR WHOLE WITHOUT THE WRITTEN PERMISSION OF L-COM, INC. IS PROHIBITED.

REVISIONS			
REV	DESCRIPTION	DATE	APPROVED
A	INTERNAL RELEASE	10/25/11	B.PUCHASKI
-	-	-	-
-	-	-	-



SMA MALE CONNECTOR



RoHS Compliant ✓

NOTES:

PACKAGING:  
COMPONENT SHALL BE INDIVIDUALLY PACKAGED IN ACCORDANCE WITH L-COM SPECIFICATION PKG-00031

UNLESS OTHERWISE SPECIFIED, DIMENSIONS ARE IN INCHES [mm]  DIMENSIONAL TOLERANCES: .X = ±.1 .XX = ±.01 .XXX = ±.005  ANGULAR TOLERANCES: ALL = ± 1°	APPROVALS	DATE		45 BEECHWOOD DRIVE NORTH ANDOVER, MA 01845	
	DRAWN BY B.PUCHASKI	10/25/11			
PROJECTION 	CHECKED BY P.PESA	10/25/11	CATEGORY ANTENNA		
	APPROVED BY P.PESA	10/25/11	PRODUCT DESCRIPTION 2.4GHz 7dBi RUBBER DUCK ANTENNA W/SMA MALE CONNECTOR		
	COLOR VARIATIONS MAY OCCUR	SIZE <b>A</b>	FSCM NO. <b>43321</b>	DWG. NO. <b>HG2407RD-SM</b>	REV. <b>A</b>
		SCALE: NONE	CAD FILE: HG2407RD-SM.SLDDRW		SHEET 1 OF 1