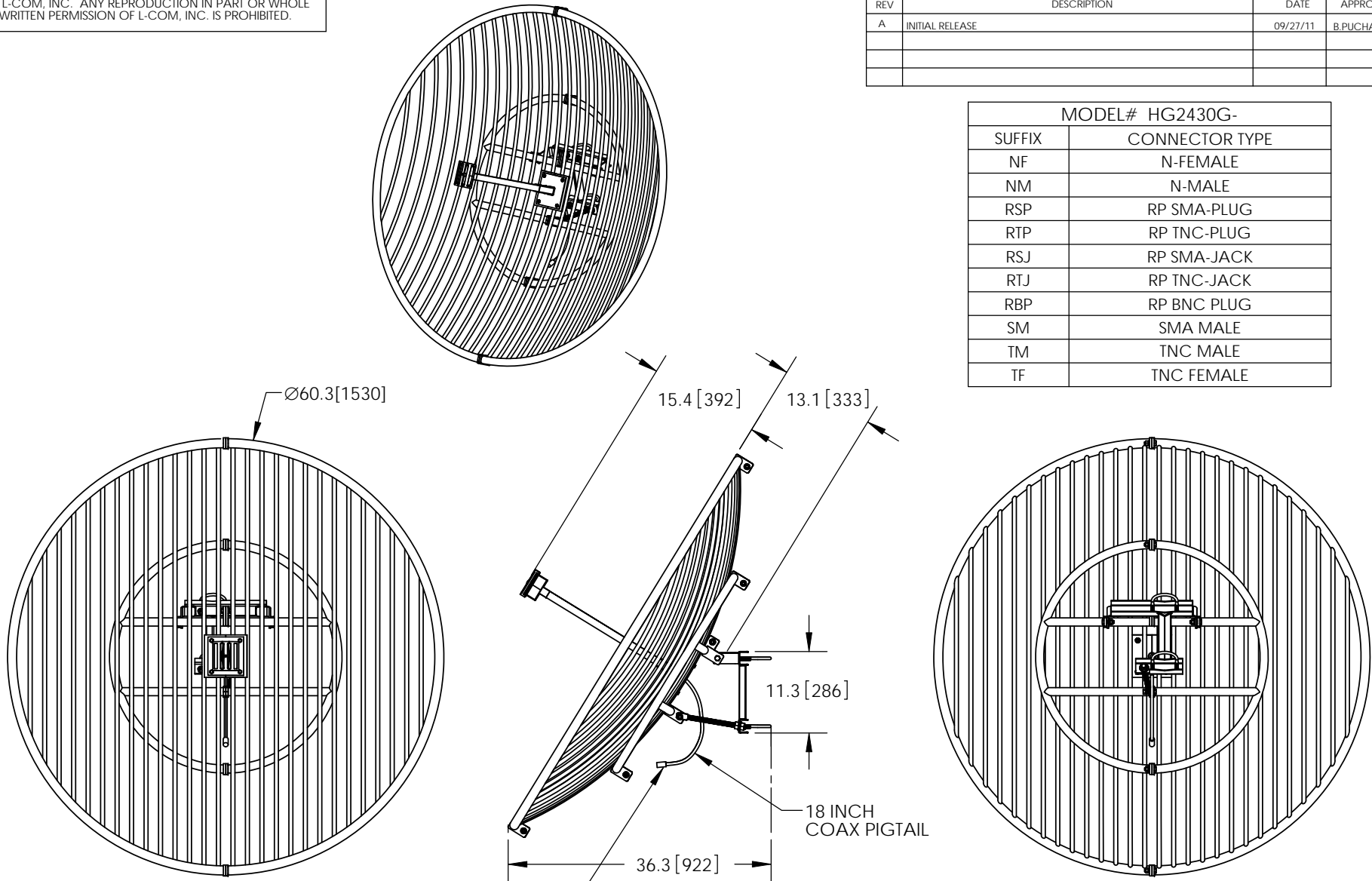


THE INFORMATION CONTAINED IN THIS DRAWING IS THE SOLE PROPERTY OF L-COM, INC. ANY REPRODUCTION IN PART OR WHOLE WITHOUT THE WRITTEN PERMISSION OF L-COM, INC. IS PROHIBITED.

REVISIONS			
REV	DESCRIPTION	DATE	APPROVED
A	INITIAL RELEASE	09/27/11	B.PUCHASKI

MODEL# HG2430G-	
SUFFIX	CONNECTOR TYPE
NF	N-FEMALE
NM	N-MALE
RSP	RP SMA-PLUG
RTP	RP TNC-PLUG
RSJ	RP SMA-JACK
RTJ	RP TNC-JACK
RBP	RP BNC PLUG
SM	SMA MALE
TM	TNC MALE
TF	TNC FEMALE



SEE CHART FOR CONNECTOR TYPE

NOTES:  
 PACKAGING:  
 COMPONENT SHALL BE PACKAGED IN ACCORDANCE WITH L-COM SPEC PKG-00017

- ALL DIMENSIONS FOR REFERENCE -

RoHS Compliant ✓

UNLESS OTHERWISE SPECIFIED, DIMENSIONS ARE IN INCHES [mm]  DIMENSIONAL TOLERANCES: .X = ±.1 .XX = ±.01 .XXX = ±.005  ANGULAR TOLERANCES: ALL = ± 1°  PROJECTION	APPROVALS B.PUCHASKI	DATE 09/27/11		45 BEECHWOOD DRIVE NORTH ANDOVER, MA 01845	
	CHECKED BY P.PESA	09/27/11		CATEGORY ANTENNA	
	APPROVED BY P.PESA	09/27/11	PRODUCT DESCRIPTION 2.4GHz 30dBi GRID ANTENNA W/ CONNECTOR PIGTAIL		
	CONFIGURATION DETAILS OF UNDIMENSIONED FEATURES MAY VARY  COLOR VARIATIONS MAY OCCUR	SIZE A	FSCM NO. 43321	DWG. NO. HG2430G	REV. A
SCALE: NONE		CAD FILE: HG2430G.SLDDRW		SHEET 1 OF 1	