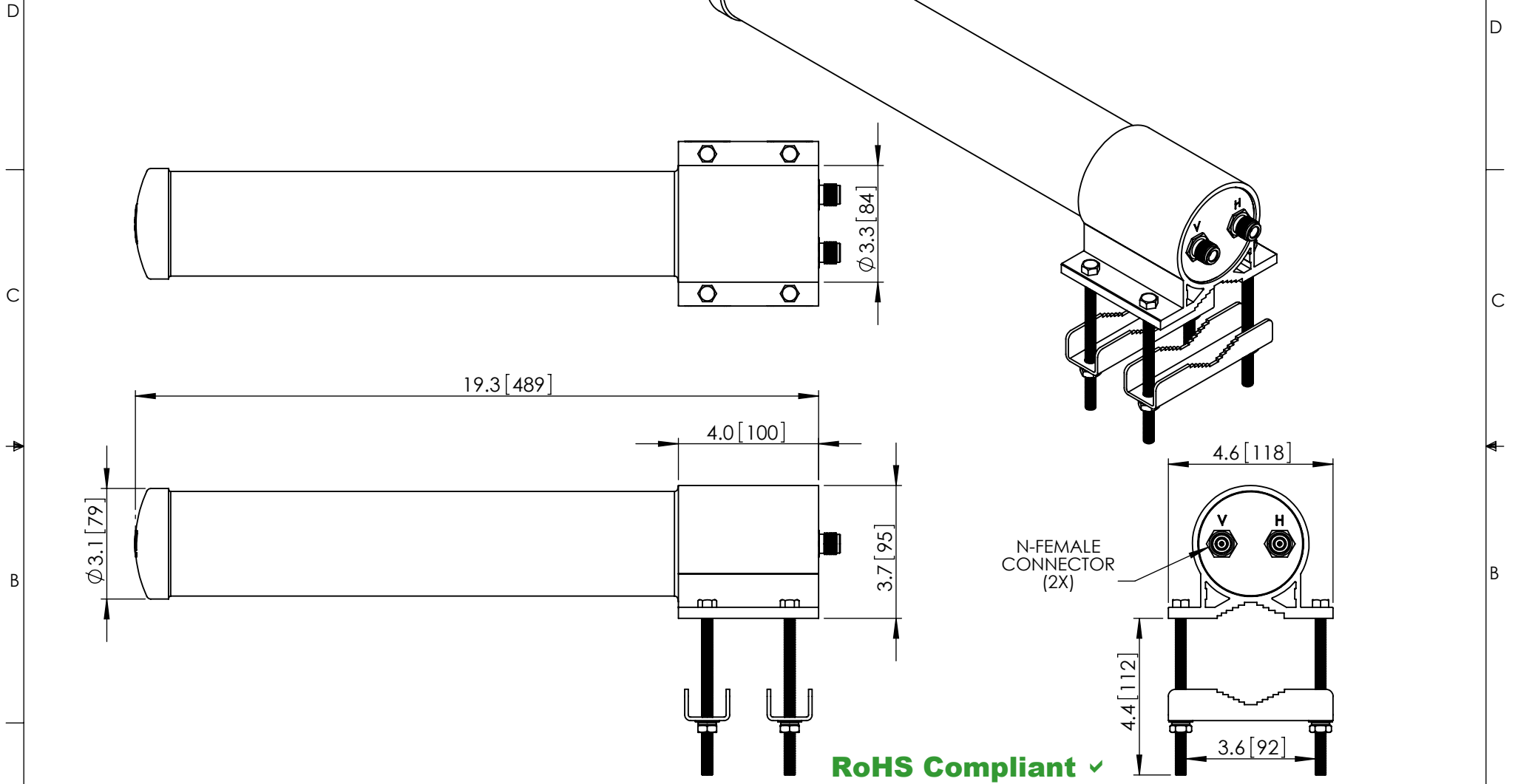


THE INFORMATION CONTAINED IN THIS DRAWING IS THE SOLE PROPERTY OF L-COM, INC. ANY REPRODUCTION IN PART OR WHOLE WITHOUT THE WRITTEN PERMISSION OF L-COM, INC. IS PROHIBITED.

| REVISIONS |                 |          |           |
|-----------|-----------------|----------|-----------|
| REV       | DESCRIPTION     | DATE     | APPROVED  |
| A         | INITIAL RELEASE | 01/10/12 | D.GRIFFIN |
|           |                 |          |           |
|           |                 |          |           |



NOTES:  
 PACKAGING:  
 COMPONENT SHALL BE PACKAGED IN ACCORDANCE WITH L-COM SPEC PKG-00087.  
 - ALL DIMENSIONS FOR REFERENCE -

|   |                        |                              |  |  |
|---|------------------------|------------------------------|--|--|
| UNLESS OTHERWISE SPECIFIED, DIMENSIONS ARE IN INCHES [mm]<br><br>DIMENSIONAL TOLERANCES:<br>.X = ±.1<br>.XX = ±.01<br>.XXX = ±.005<br><br>ANGULAR TOLERANCES:<br>ALL = ± 1° | APPROVALS              | DATE                         |  | 45 BEECHWOOD DRIVE<br>NORTH ANDOVER, MA<br>01845 |
|   | DRAWN BY<br>B.PUCHASKI | 01/10/12                     |  | CATEGORY   |
| PROJECTION<br>  | CHECKED BY<br>P.PESA   | 01/10/12                     | PRODUCT DESCRIPTION<br>5.1GHz-5.8GHz 10dbi DUAL POLARITY<br>OMNI ANTENNA W/N-FEMALE CONNECTORS |  |
|   | APPROVED BY<br>P.PESA  | 01/10/12                     | SIZE<br><b>A</b>   | FSCM NO.<br><b>43321</b>                         |
| COLOR VARIATIONS MAY OCCUR  |                        | DWG. NO.<br>HG5158DP-10U     |  | REV.<br><b>A</b>                                 |
| SCALE: NONE   |                        | CAD FILE: HG5158DP-10U.SLDRW |  | SHEET 1 OF 1                                     |