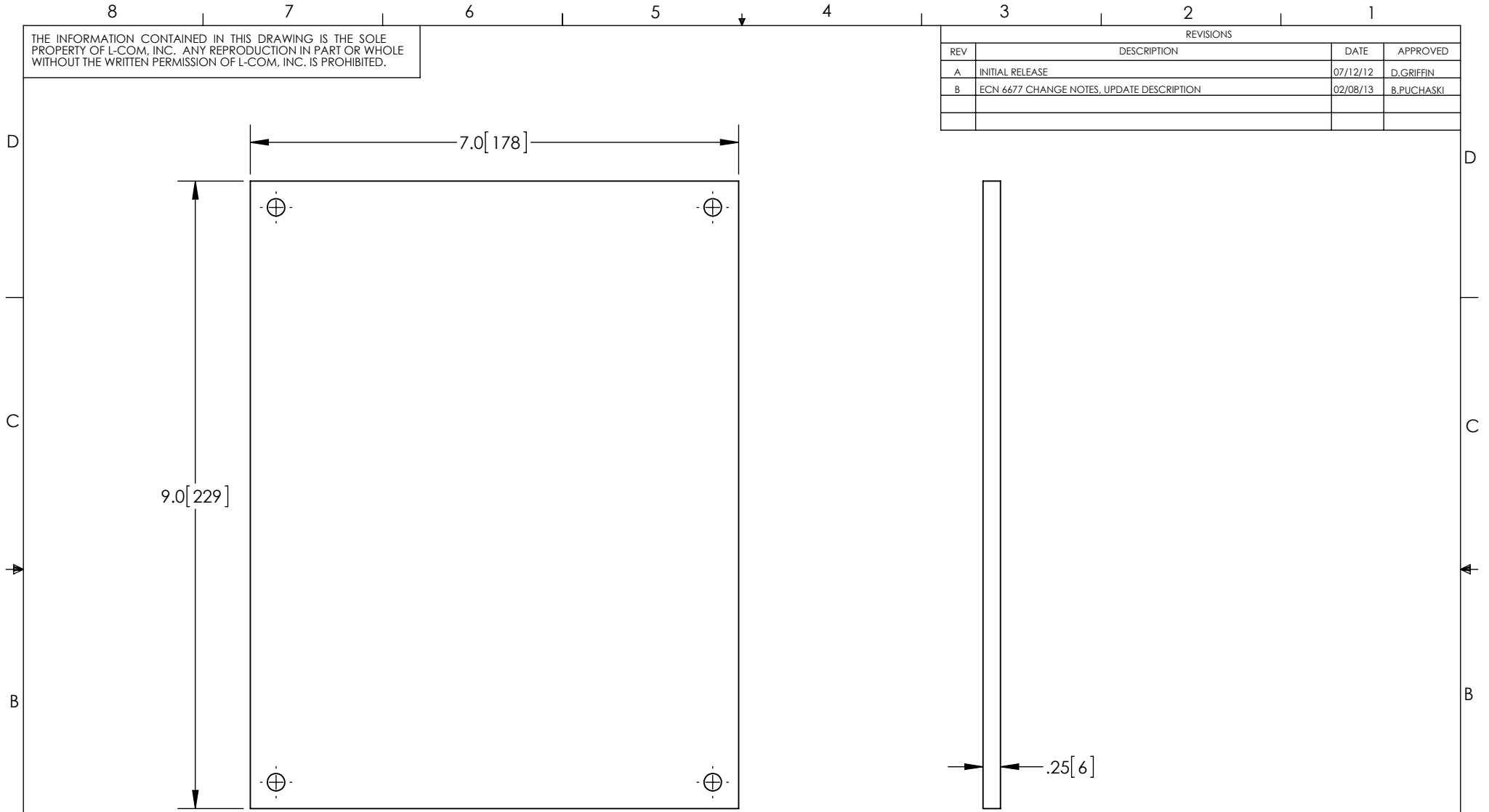


THE INFORMATION CONTAINED IN THIS DRAWING IS THE SOLE PROPERTY OF L-COM, INC. ANY REPRODUCTION IN PART OR WHOLE WITHOUT THE WRITTEN PERMISSION OF L-COM, INC. IS PROHIBITED.


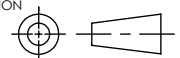
REVISIONS			
REV	DESCRIPTION	DATE	APPROVED
A	INITIAL RELEASE	07/12/12	D.GRIFFIN
B	ECN 6677 CHANGE NOTES, UPDATE DESCRIPTION	02/08/13	B.PUCHASKI



NOTES:

- 1- PACKAGE IN ACCORDANCE WITH L-COM SPECIFICATION PS-0014
- ALL DIMENSIONS FOR REFERENCE ONLY -

RoHS Compliant ✓

UNLESS OTHERWISE SPECIFIED, DIMENSIONS ARE IN INCHES [mm] DIMENSIONAL TOLERANCES: .X = ±.1 .XX = ±.01 .XXX = ±.005 ANGULAR TOLERANCES: ALL = ± 1°	APPROVALS	DATE		45 BEECHWOOD DRIVE NORTH ANDOVER, MA 01845	
	DRAWN BY B.PUCHASKI	07/12/12			
	CHECKED BY K.BURGNER	07/12/12	CATEGORY	ENCLOSURE	
APPROVED BY P.PESA	07/12/12	CONFIGURATION DETAILS OF UNDIMENSIONED FEATURES MAY VARY	PRODUCT DESCRIPTION MOUNTING PLATE BLANK NON-METALIC FOR 10 X 8 NEMA ENCLOSURE		
PROJECTION 	COLOR VARIATIONS MAY OCCUR	SIZE A	FSCM NO. 43321	DWG. NO. HGX-NPLATE25	REV. B
SCALE: NONE		CAD FILE: HGX-NPLATE25.SLDDRW		SHEET 1 OF 1	